

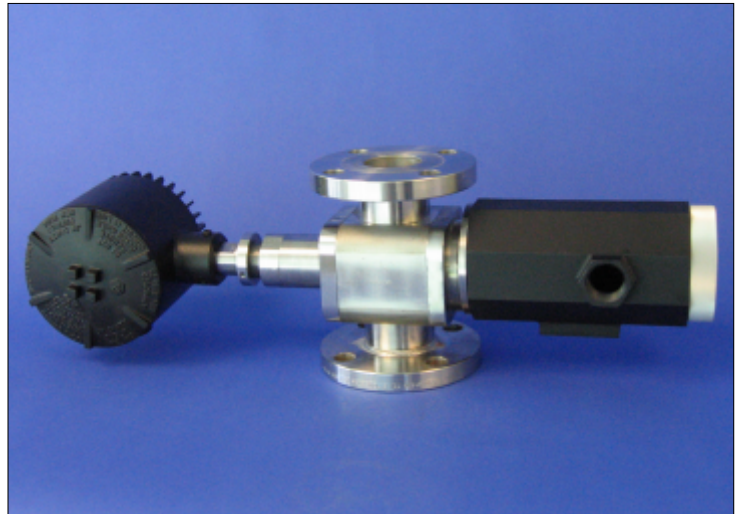
# CANTY

## PROCESS TECHNOLOGY

### INFLOW™ OIL IN WATER / WATER IN OIL / MULTIPHASE OIL / PRODUCED WATER / TAR SANDS MEASUREMENT SYSTEMS

Combining the latest in CCD Ethernet camera technology with Canty fused glass, lighting and CANTYVISIONCLIENT™ software, the INFLOW™ Measurement System provides real time In Flow measurement of Oil in Water, Water in Oil, Multiphase Oil, Produced Water and Tar Sands.

No sampling or lab analysis is required! Each unit can be fully integrated into existing TCP/IP networks. CANTYVISIONCLIENT™ software is installed on a user-supplied PC, and connected to the INFLOW™ measurement system via an Ethernet network. Images of the process can be viewed from any networked PC. The live images are remotely analyzed by CANTYVISIONCLIENT™ software. A comprehensive library of standard utilities and data functions provide a multitude of *real-time* process information.



The CANTY INFLOW™ System uses a 0-1/2" variable insertion measurement gap. This insertion is made possible by the Fuseview™ sight glass, which allows the optical fused pieces to be located in the center of the fluid stream, which is unique to the Canty system. The fused glass seal contains no gaskets, ledges, or steps allowing the highest velocity, representative sample and keeps the sensor clean, even in the harshest of environments (crude oil, drilling mud, etc.). The fused glass seal location keeps the sensor in line with the process temperature to avoid product build up due to thermal change. The image processor can be configured with multiple zone sensing on the image of the fluid. The results from the zones can be compared to base line values for reliability and alarm on detection of a problem.

#### FEATURES

- Ethernet Connectivity - Wired or Wireless by End User
- Real Time Monitoring Of Process In Flow
- Solid One Piece Central Hub
- High Pressure / Temperature Fuseview™
- Easily Installed Modular Unit
- Fused Glass Process Barriers - Self Cleaning
- Regulated Light Source Emits Cold Light To Prevent Product Bake-On
- OPC, 4-20mA Current Loop, EXCEL spreadsheet and Relay Outputs Are Available

#### ADVANTAGES

- Provides Both A Real Time, In Flow Measurement And A Continuous Real Time View Of The Product
- Various Process Connection Sizes Available - ANSI or DIN Flanged, Swagelok®, NPT
- Optional Jet Spray Ring
- Utilizes Canty Cold Light and Fused Glass
- Available In NEMA4, IP66, Explosion Proof or Flame Proof Packages
- Digital Video Storage to Customer PC / DVD or Network Drive
- No Purging Needed with Standard Lighting

#### COMMON APPLICATIONS

- |                            |                 |                |
|----------------------------|-----------------|----------------|
| • Oil in Water (PPM / PPB) | • Sand % Solids | • Crude Oil    |
| • Produced Water           | • Flotation     | • Water In Oil |
| • Water Cut                | • Gas Analysis  | • Emulsions    |

**CANTY** JM Canty Inc  
JM Canty Intl Ltd

Buffalo, NY USA  
Dublin, Ireland

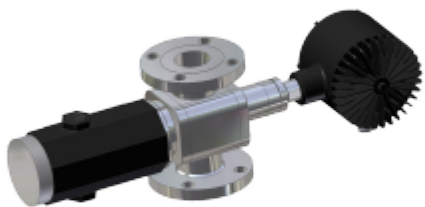
Ph: (716) 625 4227  
Ph: +353 (01) 882 9621

Fax: (716) 625 4228  
Fax: +353 (01) 882 9622

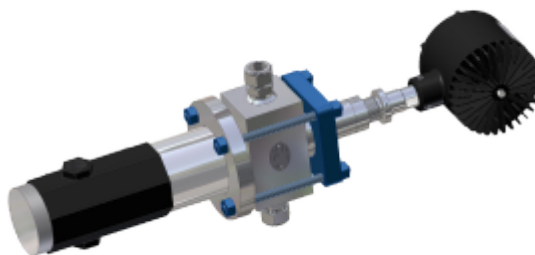
[www.jmcanty.com](http://www.jmcanty.com)

Document P/N: TA11014-1 REV. 4

## MOUNTING CONNECTIONS



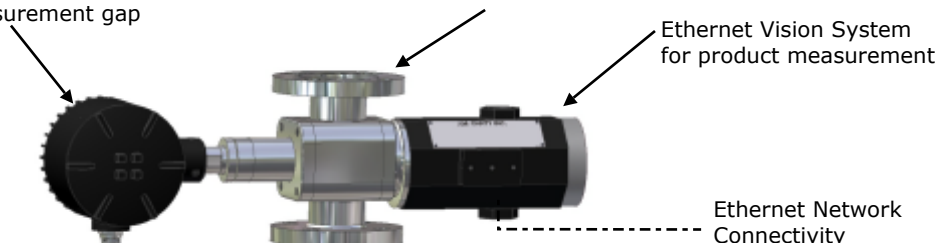
**FLANGE CONNECTION**



**SWAGELOK® CONNECTION**

### TYPICAL PACKAGE

Canty Light - Provides optimal backlighting with variable 0-1/2" [12.7mm] measurement gap



- Notes:
1. Camera and Light PSUs are not shown but must be located within 100 feet of the unit. The Camera Power Supply enclosure has the same environmental rating as the system.
  2. CantyVisionClient™ Software is included but the customer provides the PC which is not included with the system. Reference Document TA10592-1 for computer requirements.

## Ordering Information

HOW TO ORDER: Select the appropriate symbols and build a part number :

### EXAMPLE:

**V O 6 C 1 1 1 A A 1 V**

<b>APPLICATION</b> O - Oil In Water M - Multiphase W - Water in Oil	<b>INTERNAL SEAL MATERIAL</b> B - BUNA V - VITON® S - SILICONE E - EPDM N - NEOPRENE K - KALREZ® C - CHEMREZ®										
<b>SYSTEM CLASSIFICATION</b> 6 - Standard Optics	<b>ENVIRONMENTAL RATING</b> 1 - NEMA 4 WEATHERPROOF 2 - IP 66 3 - EXPLOSION PROOF 4 - FLAME PROOF										
<b>CONNECTION TYPE</b> B - Swagelok® C - Flange (ANSI/DIN) E - NPT (Female)	<b>ANSI OR DIN PRESSURE RATING / FLANGE PATTERN</b> <table border="1"> <thead> <tr> <th>ANSI</th> <th>DIN</th> </tr> </thead> <tbody> <tr> <td>A - 150 PSI</td> <td>D - 10 BAR</td> </tr> <tr> <td>B - 300 PSI</td> <td>E - 16 BAR</td> </tr> <tr> <td>C - 600 PSI</td> <td>F - 25 BAR</td> </tr> </tbody> </table> Consult factory for pressure rating up to 10,000 PSI.	ANSI	DIN	A - 150 PSI	D - 10 BAR	B - 300 PSI	E - 16 BAR	C - 600 PSI	F - 25 BAR		
ANSI	DIN										
A - 150 PSI	D - 10 BAR										
B - 300 PSI	E - 16 BAR										
C - 600 PSI	F - 25 BAR										
<b>CONNECTION SIZE</b> <table border="1"> <tbody> <tr> <td>0 - 1/2" (12.7mm)</td> <td>4 - 4" (100mm)</td> </tr> <tr> <td>1 - 1" (25mm)</td> <td>6 - 6" (150mm)</td> </tr> <tr> <td>5 - 1.5" (38mm)</td> <td>8 - 8" (200mm)</td> </tr> <tr> <td>2 - 2" (50mm)</td> <td>9 - 10" (254mm)</td> </tr> <tr> <td>3 - 3" (80mm)</td> <td>A - 12" (305mm)</td> </tr> </tbody> </table>	0 - 1/2" (12.7mm)	4 - 4" (100mm)	1 - 1" (25mm)	6 - 6" (150mm)	5 - 1.5" (38mm)	8 - 8" (200mm)	2 - 2" (50mm)	9 - 10" (254mm)	3 - 3" (80mm)	A - 12" (305mm)	<b>INPUT POWER</b> A - 120 V AC / 60Hz / 250W B - 230 V AC / 50Hz / 250W
0 - 1/2" (12.7mm)	4 - 4" (100mm)										
1 - 1" (25mm)	6 - 6" (150mm)										
5 - 1.5" (38mm)	8 - 8" (200mm)										
2 - 2" (50mm)	9 - 10" (254mm)										
3 - 3" (80mm)	A - 12" (305mm)										
<b>WETTED METAL MATERIAL</b> 1 - 316L Stainless Steel 2 - Hastelloy® C276 or equal 3 - Hastelloy® C-22® or equal 4 - Carbon Steel	<b>NON-WETTED METAL MATERIAL(PRESSURE BEARING)</b> 0 - Carbon Steel 1 - 300 Series Stainless Steel										

**CANTY** JM Canty Inc  
JM Canty Intl Ltd

Buffalo, NY USA  
Dublin, Ireland

Ph: (716) 625 4227  
Ph: +353 (01) 882 9621

Fax: (716) 625 4228  
Fax: +353 (01) 882 9622