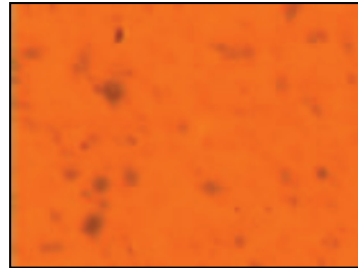
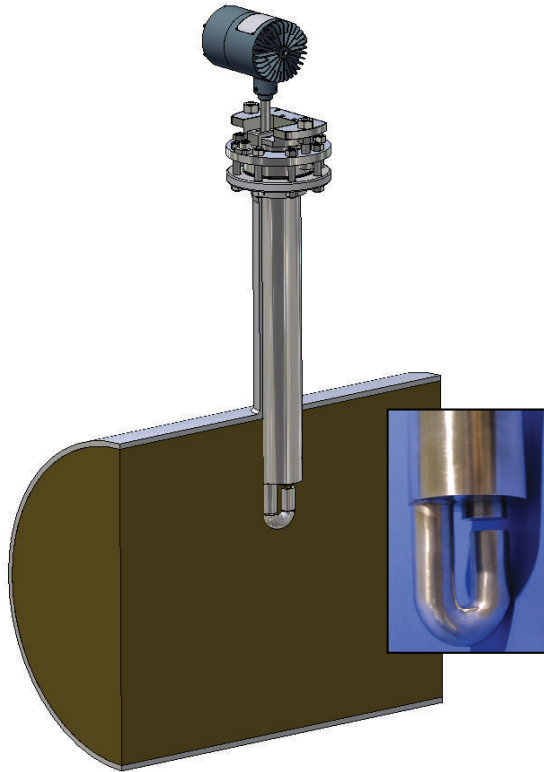
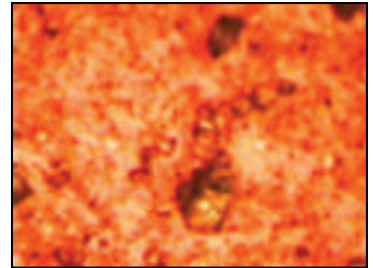


# PARTICLE PROBE™

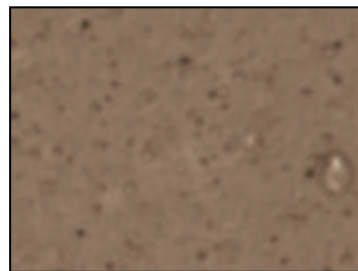
OIL IN WATER / WATER IN OIL / MULTIPHASE  
OIL MEASUREMENT SYSTEM



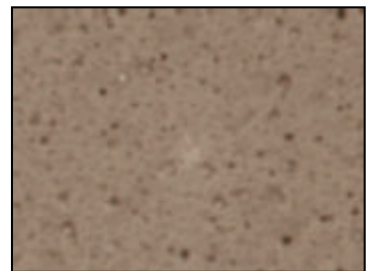
Untreated Crude



Treated Crude



Crystalline Calcium Particulate



Polymer Formation

## ADVANTAGES

- Real Time Analysis, No Sampling
- Ethernet Connectivity - Wired Or Wireless
- WP / IP66, Explosion Proof / Flame Proof Design
- Fused Glass, High Pressure / Temperature Seal
- Self Cleaning Design
- Various Outputs Options Including OPC, 4-20 mA Current Loop

## KEY FEATURES

- Explosion proof / Flame proof & WP / IP66 Microscopic Camera / Light
- .7 Micron Particles & Larger
- 100% Oil Down To PPB Level
- Sand, Oil, Gas, Water
- FM, CSA, ATEX
- No Purge Needed
- 4" ANSI, 100mm DIN Mounting Options

## THE CANTY ADVANTAGE

The Cauty Particle Probe™ has been engineered to offer the user a means by which a liquid is analyzed while under varying pressures, temperatures and flow rates. The Particle Probe™ offers continuous, microscopic, non-destructive viewing and provides multiphase analysis of oil in water, water in oil with two dimensional results. The vision system with integral lighting features precision optics designed to enhance the image prior to display or analysis. The image sensor is a high resolution / high speed Ethernet camera coupled to a microscopic lens system. The system offers focus ability, variable lighting, and high magnification objective lenses to cover a range of sizes. All Particle Probes™ feature the Fuseview™ window as the product contact barrier. Our unique fused glass windows far exceed all other glass windows in safety and performance. The fused glass provides a flush finish, without the pocketing found in other mechanical seals which disturb the flow pattern and particle distribution and are the major cause of flow and build-up problems.

# Ordering Information

HOW TO ORDER: Select the appropriate symbols and build a part number as shown:

EXAMPLE:

## VOE746A1C

### Video Format/Input Power

- E - Gigabit Ethernet (Color) 650(H) X 490(V) pixel array / 120 VAC
- F - Gigabit Ethernet (B&W) 650(H) X 490(V) pixel array / 120 VAC
- G - Gigabit Ethernet (Color) 650(H) X 490(V) pixel array / 230 VAC
- H - Gigabit Ethernet (B&W) 650(H) X 490(V) pixel array / 230 VAC

### Environmental Rating

- 6 - WP / IP
- 7 - EXP / FP

### Connection

- 4 - 4" ANSI, 150# Flange
  - 7 - 100mm 16 bar DIN
- All systems feature a fixed 33" [839mm] Insertion Probe.  
Additional Sizes And Pressure Ratings Available.

### O-Ring Material

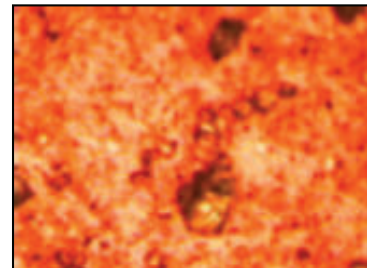
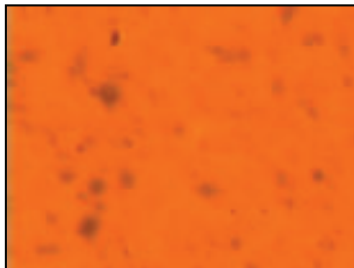
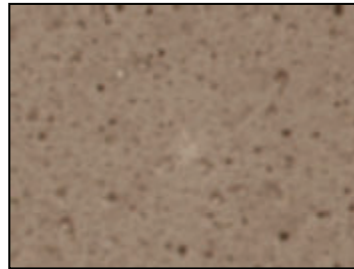
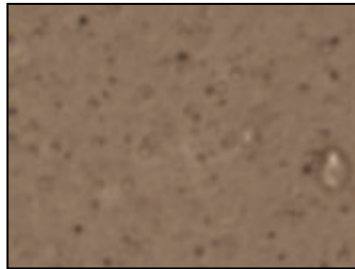
- B - Viton®
- C - Buna
- D - EPDM

### Wetted Material

- 1 - 316L Stainless Steel\*
- 2 - Hastelloy® C276 Or Equal
- 3 - Hastelloy® C-22® OR Equal

\* Cauty reserves the right to upgrade to Hastelloy® C-family of alloys or equal at their own cost.

Optional Retraction System Available. Consult Factory.



# CANTY

JM Cauty Inc

Buffalo, NY USA

Ph: (716) 625 4227

Fax: (716) 625 4228

JM Cauty Intl Ltd

Dublin, Ireland

Ph: + 353 (01) 882 9621

Fax: +353 (01) 882 9622

[www.jmcanty.com](http://www.jmcanty.com)

Document P/N: TA8822-1 Rev. 0