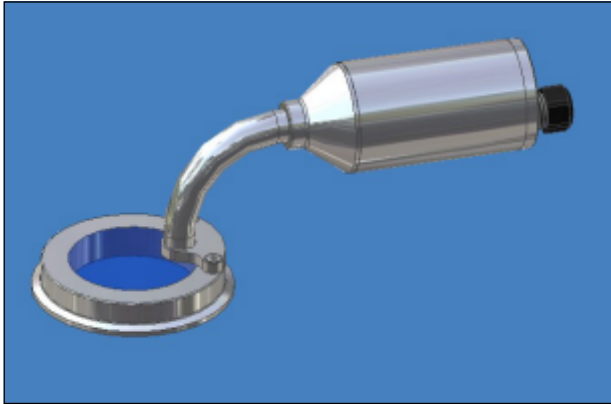


# CANTY

## PROCESS TECHNOLOGY

## PUREVIEW™ SANITARY SIGHT GLASS/LIGHTING SYSTEMS



### COLD LIGHT

Canty fiber optic lighting systems have been designed to provide efficient, high output tungsten-halogen light in a cost effective package. Canty uses only high quality, flexible fiber optic light pipes to guide the light from our light source through a sight glass or process connection. The light is elliptically focused into the fiber optic light pipe and guided through the sight glass minimizing losses while maximizing your tank or vessel lighting!

### ADVANTAGES OF THE PUREVIEW™

- Various worldwide approvals
- Extremely high strength due to radial compression on the hermetically sealed glass
- Very high impact strength and thermal shock resistance due to pre-stressing
- Operates under positive & negative pressure
- Certification on material and pressure rating is available, typical of ASME code

### APPLICATIONS

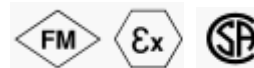
- Sterile Process Vessels
- Aseptic Tanks
- Sanitary Areas
- Portable Tanks
- Reactors, Fermentors, Sterilizers
- Freeze Dryers
- Many, many more

### FEATURES OF PUREVIEW™ TRI-CLAMP® SIGHT GLASS/ LIGHTING SYSTEMS

- Many models are FM, CSA approved!
- Flexible fiber optic light bundle provides a high intensity output
- NEMA 4, IP66, Explosion proof (Class I, Div. 1, Group B, C & D, Class II, Div. 1, Groups E, F & G) or Flameproof EEx d IIC T6 Ratings
- One piece sanitary construction
- Connects to standard Tri-clamp® connection
- Special sizes available upon request
- Cool Light Output; There is No Product Bake On.
- ASME BPE / FDA / USP Compliant

### UNMATCHED SAFETY AND RELIABILITY

All Canty sight glasses feature the Fuseview™ window. Our unique fused glass windows far exceed all conventional tempered glass windows in safety and performance. By fusing glass to metal, a high pressure, high safety, hermetic seal is formed. The fused glass technology ensures safety with every Fuseview™. What's more, our windows can easily be removed for cleaning. Canty windows do not have to be discarded as do traditional tempered glass windows. Canty fused glass windows can be re-used again and again.



### SPECIFICATIONS

#### Fiber Optic Bundle

Construction:	Multi-Fiber Glass Bundle
Exterior:	Crush Resistant Outer Tubing
Termination:	Stainless Steel, .75" diameter
Lengths:	12", 24", 36", 48", 60", 72", 96", 120", 144" lengths are available. Consult factory for more sizes

**CANTY**

JM Canty Inc | Buffalo, NY USA |  
JM Canty Ltd | Dublin, Ireland

Ph: (716) 625 4227 |  
Ph: + 353 (01) 882 9621

Fax: (716) 625 4228  
Fax: +353 (01) 882 9622

[www.jmcanty.com](http://www.jmcanty.com)

Document P/N: TA9306-1 Rev. 19

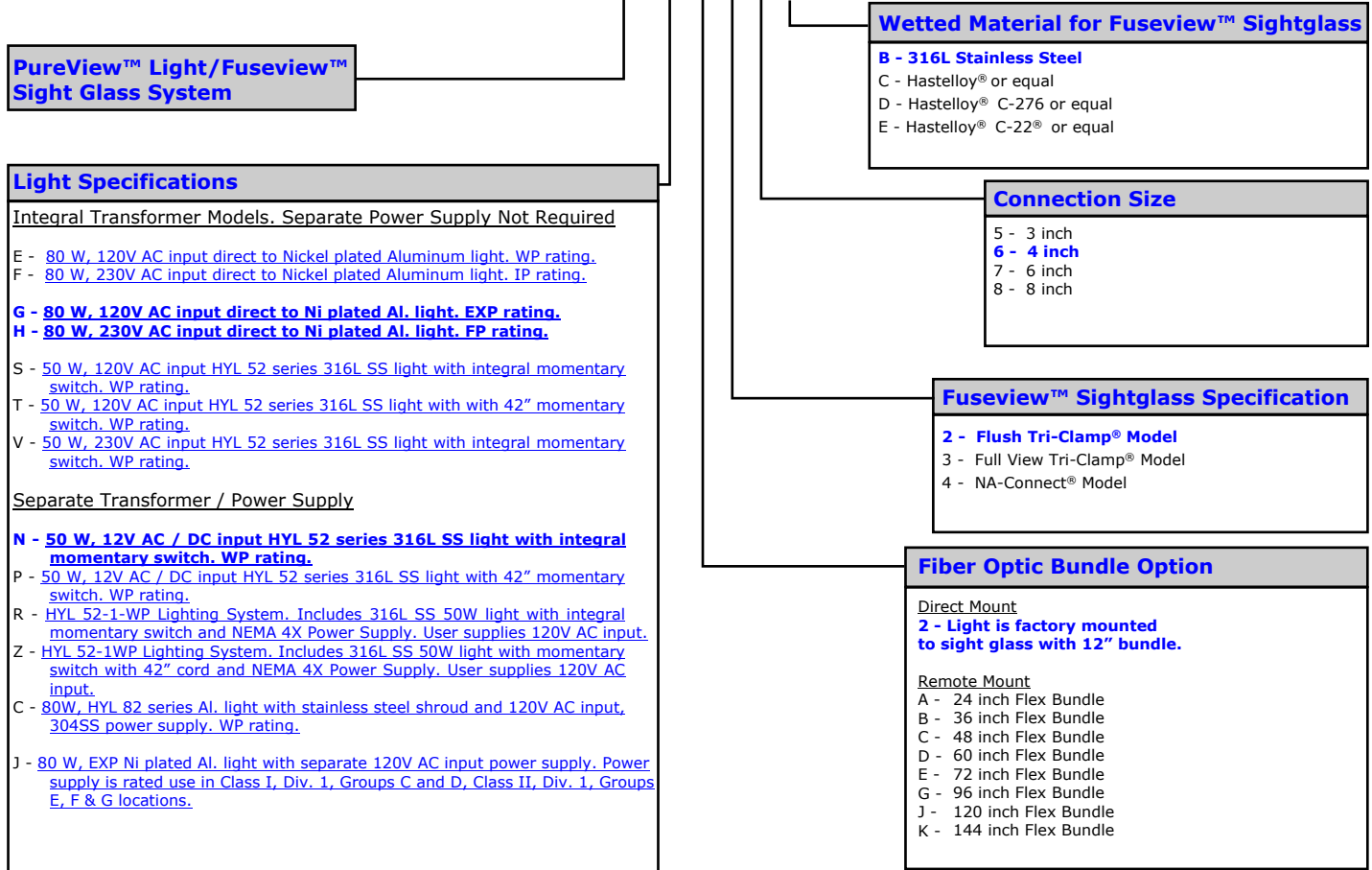
# Ordering Information

HOW TO ORDER: Select the appropriate symbols and build a part number as shown.

Recommended model options are shown in bold.

## EXAMPLE:

# PVN226B

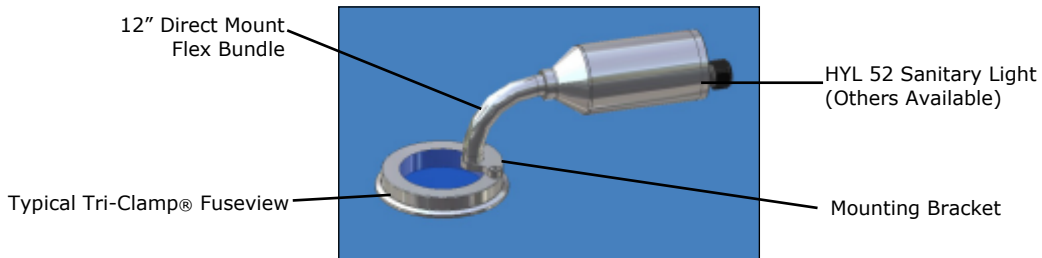
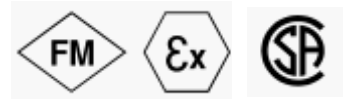


WP = Weather Proof  
 EXP = Explosion Proof  
 FP = Flame Proof  
 IP = Ingress Protection

Notes:

\*\*All models include required mounting brackets.

\*\*Canty reserves the right to upgrade to Hastelloy® C-family of alloys or equal at their own cost.



# CANTY

JM Canty Inc | Buffalo, NY USA  
 JM Canty Ltd | Dublin, Ireland

Ph: (716) 625 4227  
 Ph: + 353 (01) 882 9621

Fax: (716) 625 4228  
 Fax: +353 (01) 882 9622

[www.jmcanty.com](http://www.jmcanty.com)

Document P/N: TA9306-1 Rev. 19

Hastelloy® is a registered trademark of Haynes International.  
 Tri-Clamp® is a registered trademark of Alfa Laval Inc.