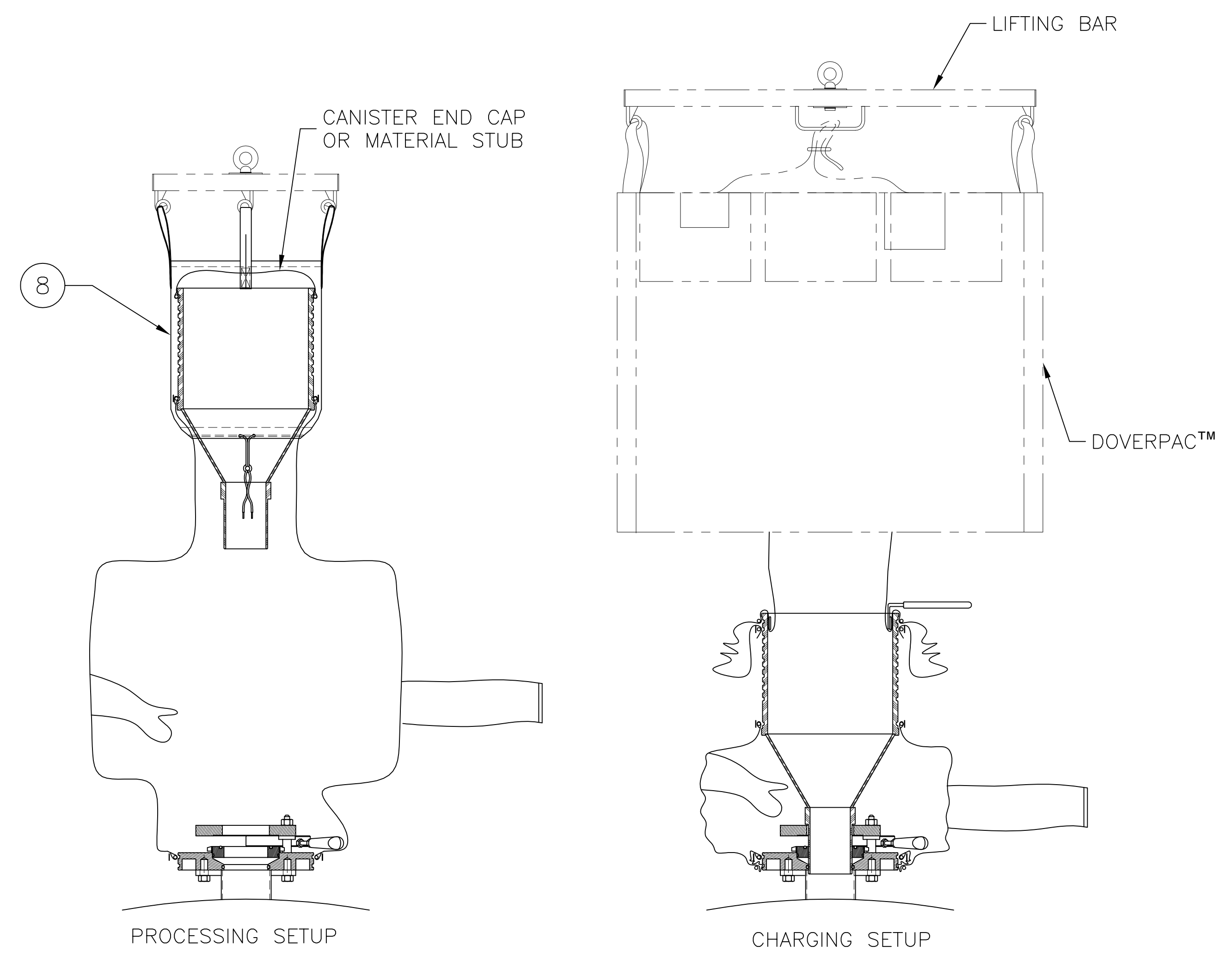
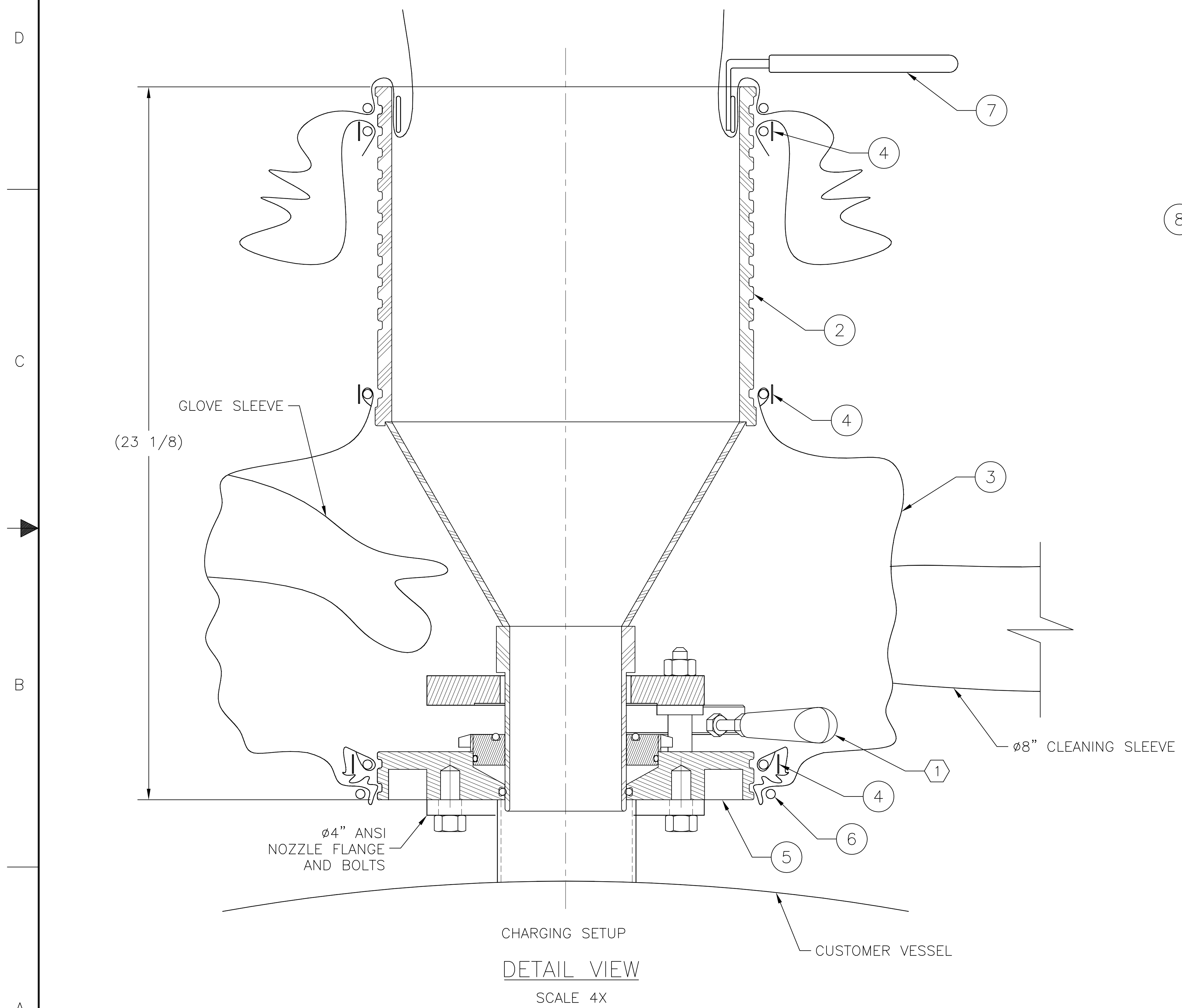


REVISIONS				
ZONE	REV	DESCRIPTION	DATE	APPROVAL
	A	ADDED NOTE 1 RG 01/08/03	TM	M. C. MASTER CONTROL
	B	ADDED PROCESSING SETUP SKETCH RG 01/23/03	TM	M. C. MASTER CONTROL

NOTES:  
 ① THE SIGHT GLASS WILL PIVOT TO ONE SIDE OF THE CANTY QUICKPORT. AS A RESULT, THE SIGHT GLASS HANDLE WILL SWEEP AN AREA THAT REQUIRES A MINIMUM RADIAL CLEARANCE OF 14" FROM THE CENTER OF THE NOZZLE. SEE DRAWING FOR HW6154 FOR MORE DETAILS.



QTY PER ASSY	DRAWING OR PART NO.	ITEM NO.	NOMENCLATURE	REMARKS
1	DP2067-01	8	CANISTER SUPPORT SHROUD	
1	HW6003-01	7	CIR-CLIP	
1	DP2101-01	6	BUNGEE LOOP ASSY, Ø10" W/PULL TABS	
1	HW6154-01	5	CANTY QUICKPORT, Ø4"	
3	ST22C3739-03	4	BAND CLAMP, Ø12.25"	
1	DP2129-01	3	HAS, CANTY QUICKPORT	
1	HW6151-01	2	Ø4" CANTY QUICKPORT CANISTER	
	SK6475-10579	1	CHARGING ARRANGEMENT ASSY	

CHARGING SETUP  
 DETAIL VIEW  
 SCALE 4X

① CHARGING ARRANGEMENT ASSEMBLY,  
 Ø4" CANTY QUICKPORT

THIS DRAWING CONTAINS INFORMATION CONSIDERED TO BE PROPRIETARY TO ILC DOVER. THIS DRAWING SHALL NOT BE SHARED WITH ANY THIRD PARTY WITHOUT PRIOR WRITTEN APPROVAL FROM ILC DOVER.

UNLESS OTHERWISE SPECIFIED  
 3 PLACE DECIMALS +/- \_\_\_\_\_ 2 PLACES +/- \_\_\_\_\_  
 FRACTIONS +/- \_\_\_\_\_ ANGLES +/- \_\_\_\_\_ DEG  
 ALL DIMENSIONS ARE IN INCHES

IDENT & TRACE CODE \_\_\_\_\_ PER 107-04

*Innovation, Leadership and Commitment*  
**ILC DOVER, INC.**  
 One Moonwalker Road, Frederica, Delaware 19946-2080

CHARGING ARRANGEMENT ASSEMBLY,  
 Ø4" CANTY QUICKPORT

SIZE	CAGE CODE	DWG NO.	REV
D	74897	SK6475-10579	B

SCALE 1/8 WT - SHEET 1 OF 1