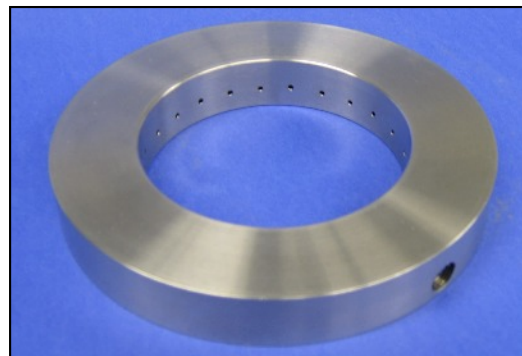


# CANTY

## PROCESS TECHNOLOGY

### JET SPRAY RING



#### JET SPRAY RING

The Jet Spray Ring was originally designed to eliminate bothersome PVC build-up on sight glasses and used in the manufacture of heat shield tile epoxy for the US space shuttle program. Since it's original conception, the spray ring has been used on many applications in the pharmaceutical, chemical, petrochemical, and dairy industries.

#### APPLICATIONS

- Process Vessels
- Laboratory Reactors
- Research Vessels
- Dryers
- Pressure Chambers
- Incinerators
- In Line Mixer
- Many, many more!

#### THE CANTY ADVANTAGE

The Canty Jet Spray Ring generates a high pressure vortex rinsing action to remove tough deposits from sight glasses, lights, and vision systems.

The Jet Spray Ring accepts a rinsing/cleaning solution and distributes the pressurized material through the specially designed rinse ports. These rinse ports have been engineered to provide maximum cleaning power in a compact package. The Jet cleaning action expels all debris from the sight glass, providing an exceptional view into the process.

The Jet Spray Ring may be used for constant preventive or instantaneous blast-off cleaning. As a suggestion, cleaning may be timed for 5 seconds every hour, or tied in with normal CIP (Clean in Place). Any low viscosity fluid compatible with your process may be used. Common cleaning agents for powder service include air and nitrogen, while common liquid service agents include water or solvents.

#### FEATURES

- Materials:
- Stainless Steel
  - Alloy C
  - Hastelloy® C276 or equal
  - Hastelloy® C-22® or equal
  - Titanium
  - Monel®
  - Inconel®
  - Teflon®
- Mounting: ANSI and DIN sizes
- Pressures: 150 PSI, 300 PSI, 600 PSI  
10 bar, 16 bar, 25 bar, 40 bar  
Pressures up to 5000 PSI available
- Sizes: 1.5" ANSI and larger  
32 mm DIN and larger

#### JET SPRAY RING MODELS

- *Open Channel:* Most popular spray ring model. For use with Fuseview™ flat gasket, non-insertion style lights, and cameras. Recommended for use with full-faced gaskets. Fluid distribution channel is accessible.
- *Closed Channel:* For use with Fuseview™ flat gasket, non-insertion style lights, and cameras. Fluid distribution channel is not accessible.
- *Closed Channel Insertion:* Use with any Canty insertion camera or light.

#### OPTIONS

- Tri-clamp model available (see TA7653-1 data sheet)
- Surveillance camera model available
- Sanitary bolt-on Fuseview model available
- Create an Orifice plate to prevent product sticking with a small internal diameter gasket

**CANTY**

JM Canty Inc

Buffalo, NY USA

Ph: (716) 625 4227

Fax: (716) 625 4228

[www.jmcanty.com](http://www.jmcanty.com)

JM Canty Intl Ltd

Dublin, Ireland

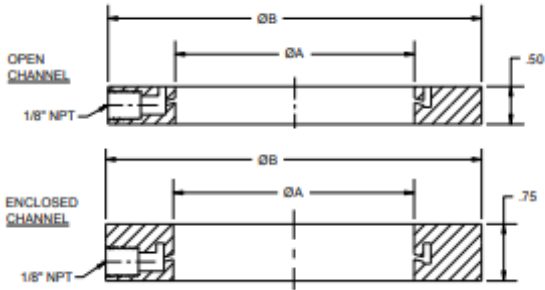
Ph: +353 (01) 882 9621

Fax: +353 (01) 882 9622

Document P/N: TA4727-1 Rev 4

# SPRAY RING SPECIFICATIONS

## FLUSH MOUNT SPRAY RING

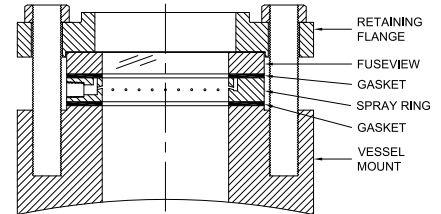
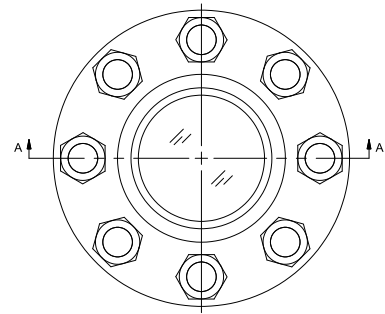


### Design Data

**Delta P Required:**  
28-30 PSI above  
Internal pressure

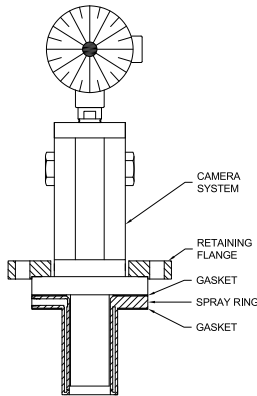
**Maximum Flow Rate:**  
1.8 gal/min at 30 psi

**Maximum Pressure:**  
5,000 psi  
On certain models  
Consult factory  
for details

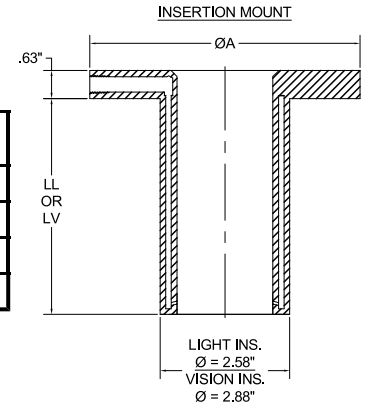


SIZE	ANSI A	ANSI B	DIN A	DIN B
1.5" [32mm]	1.70"	3.00"	56mm	88mm
2" [50mm]	2.20"	3.63"	56mm	92mm
3" [80mm]	3.20"	5.00"	81mm	127mm
4" [100mm]	4.20"	6.00"	107mm	152mm
6" [150mm]	6.20"	8.38"	157mm	213mm
8" [200mm]	8.20"	10.50"	208mm	267mm
10" [250mm]	10.20"	12.00"	246mm	305mm

## INSERTION SPRAY RING



SIZE	ANSI A	DIN A	LV	LL
3" [80mm]	5.00"	127mm	5.25" [133mm]	2"-16" [76.2-406.4mm]
4" [100mm]	6.00"	152mm	5.25" [133mm]	2"-16" [76.2-406.4mm]
6" [150mm]	8.38"	213mm	5.25" [133mm]	2"-16" [76.2-406.4mm]
8" [200mm]	10.50"	305mm	5.25" [133mm]	2"-16" [76.2-406.4mm]



## Ordering Information

HOW TO ORDER: Select the appropriate characters to build the part number:

**SR**

### MODEL

- 1 = Open Channel
- 2 = Enclosed Channel
- 3 = Insertion Light
- 4 = Insertion Camera

### PRESSURE

- A = 150 psi 1=10 bar
- B = 300 psi 2=16 bar
- D = 600 psi 3=25 bar
- 4=40 bar

### MATERIAL

- 1 = 316L Stainless Steel
- 3 = Hastelloy® C
- 4 = Hastelloy® C276 or equal
- 5 = Hastelloy® C-22® or equal
- 6 = Inconel® 601
- 8 = Teflon® (open channel only)
- 9 = Monel® 400

### INSERTION LENGTH

- A = NONE (open & enclosed models)
- B = 2" / 50.8mm
- C = 3" / 76.2mm
- D = 4" / 101.6mm
- E = 5" / 127mm
- F = 6" / 152.4mm
- G = 7" / 177.8mm
- H = 8" / 203.2mm
- I = 8.5" / 215.9mm
- J = 9" / 228.6mm
- K = 10" / 254mm
- L = 11" / 279.4mm
- M = 11.5" / 292.1mm
- N = 12" / 304.8mm
- P = 13" / 330.2mm
- Q = 14" / 355.6mm
- R = 15" / 381mm
- S = 16" / 406.4mm

Note: For an insertion camera the 6" [152.4mm] length is actually 5.25" [133mm]

### SIZE

- A = 1.5" H = 32mm
- B = 2" I = 50mm
- C = 3" J = 80mm
- D = 4" K = 100mm
- E = 6" L = 150mm
- F = 8" M = 200mm
- G = 10" N = 250mm

**CANTY**

JM Cauty Inc Buffalo, NY USA  
JM Cauty Intl Ltd Dublin, Ireland

Ph: (716) 625 4227  
Ph: +353 (01) 882 9621

Fax: (716) 625 4228  
Fax: +353 (01) 882 9622

www.jmcanty.com

Document P/N: TA4727-1 Rev 4