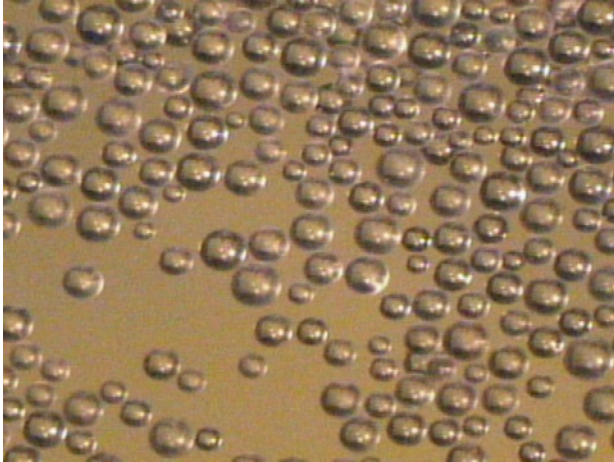


CANTY

PROCESS TECHNOLOGY

EXPANDED POLYSTYRENE SIZING - EPS CAMERA



APPLICATIONS

- Styrene Bead Growth Monitoring and Control
- On-line size measurement permits process control for improved yield
- On-line Process Monitoring generates alarms on upset

BENEFITS

- Process image display provides visual verification during process
- Real-Time On-line Process control

HOW IT WORKS

The Canty Expanded Polystyrene Sizing system is a vision-based measurement system used with a gigabit Ethernet camera for on-line particle size analysis. The system includes a high resolution camera with variable magnification lens, integral light source with flexible fiber optic light guides to view the product particles being formed in the process environment. The camera video is provided to CantyVisionClient software for particle size analysis.

CANTYVISIONCLIENT

- Particle Sizing software is installed on a Microsoft Windows based PC for image analysis.
- Analyzes real-time video of your particles using a Canty Vision Camera System
- Standard video format – Digital video can be recorded on a PC, hard drive, or DVR.
- Multiple software process control packages
- 4 Channel 4-20 mA output / OPC output for control.
- Up to four video inputs standard
- Ethernet network interface standard

FEATURES

- Fiber optic LED lighting for true shape illumination
- Fused Glass, High Pressure / Temperature Seal From Process
- Gigabit Ethernet Based High-Speed Imaging Device
- NEMA 4, Explosion proof / Flameproof Ratings are Available

SPECIFICATIONS

Ratings:	Explosion proof (U.S.) Class I, Div 1, Groups B,C&D, Flame proof (Europe) EEx d IIC T6 models are available. Wetted Material. Stainless Steel or Hastelloy® Weather proof - NEMA 4, IP 66
Power :	120 VAC , 60 Hz (230VAC / 50 Hz)
Approvals:	CE marking for Europe (CCIR,PAL systems)
Video Format:	Ethernet standard. Analog options are available upon request for retrofit systems.

CANTY

JM Canty Inc | Buffalo, NY USA
JM Canty Intl Ltd | Dublin, Ireland

Ph: (716) 625 4227
Ph: + 353 (01) 882 9621

Fax: (716) 625 4228
Fax: +353 (01) 882 9622

www.jmcanty.com

Document P/N: TA8987-1 Rev.3

All registered trademarks are the property of their respective owners.

Ordering Information

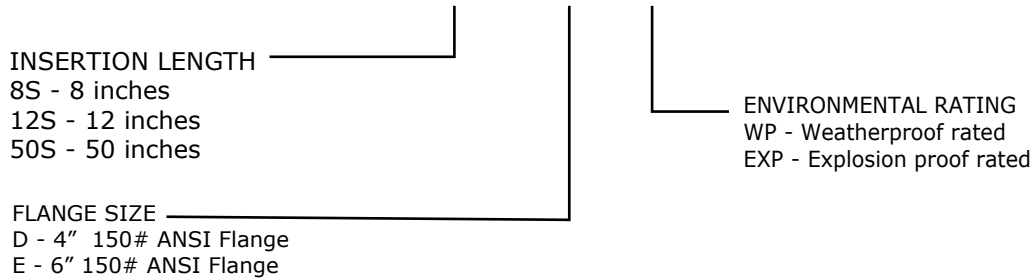
Equipment: The EPS image processing unit comes complete with software and technical start up service so your operators can learn and operate the system effectively.

The system includes a Cauty camera/light unit with insertion tip and micro lens for particle viewing. This can be provided in a 50" insertion for retrofit through the reactor top, or an 8" insertion unit that would be mounted through the reactor side wall.

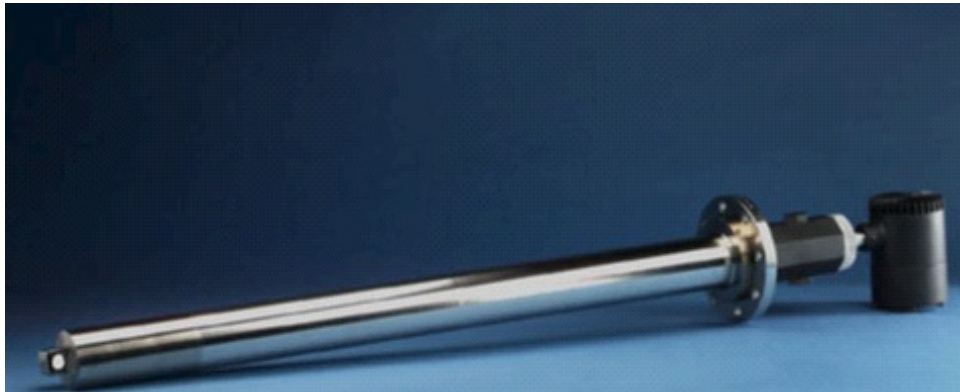
EPS-8S-EXP Process Microscope Camera (see sales sheet TA7739-1)
 Stainless steel wetted, 8" insertion camera to view into process fluid. Features include high speed digital camera, fiber-optic lighting, fused glass lens ready to mount to a 4"-150# nozzle.

How to order -
 Example:

EPS - 12S - D - WP



Process Microscope Camera



EPS 50, EPS 12 SERIES FLANGE MOUNT WITH 90° ILLUMINATION

Mounting Connections:

- 4" & 6" 150# ANSI flange
- 100 mm & 150 mm DN PN16

