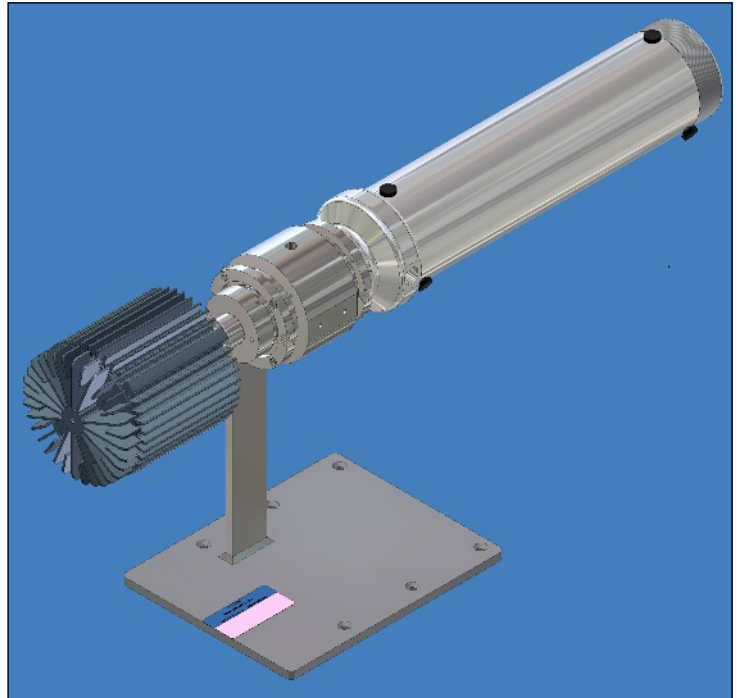


CANTY

PROCESS TECHNOLOGY

TRUFLOW™ - PARTICLE SIZING SYSTEM

The Canty TRUFLOW™ has been engineered to offer the user a means by which a liquid is analyzed while under varying pressures, temperatures and flow rates. It offers sample or continuous, microscopic, non-destructive viewing and provides particle size analysis with two dimensional results when used in conjunction with the CoreUnit™ processor. The vision system, with integral lighting, features precision optics designed to enhance the image prior to display or analysis. The image sensor is a high resolution / high speed CCD camera coupled to a microscopic lens system. The system offers zoom and focus ability, variable lighting, and multiple objective lens packages to cover a range of sizes. The TRUFLOW™ features the FUSEVIEW™ window as the product contact barrier. Our unique fused glass windows far exceed all other glass windows in safety and performance allowing for high pressure ratings. The fused glass provides a flush finish, without the pocketing found in other mechanical seals which disturb the flow pattern and particle distribution and can damage or deform particles.



FEATURES

- Particle Size, Shape and Distribution with Real Time Analysis
- Fused Glass Pressure Barrier Standard
- Rated 500 PSI @ 400 Deg. F., Options through 6,000 PSI.
- Cold Back Light Eliminates Heating of the Sample Even at High Outputs which are Required for High Shutter Speed Viewing.
- CCD Based High-Speed Imaging Device
- Adjustable Gap Option
- Regulated Temperature Option
- On-Line or Lab Plus (remote control)
- 1/4 Inch NPT Connections Standard

APPLICATIONS

- Multiphase Oil Characterization
- Polymer Bead Growth and Shape Analysis
- Mining and Aggregate Particle Size
- Centrifuge Effluent and Screen Break Detection
- In-Line Particle Size for Process Control
- Gel, Emulsion and Bubble Classifier
- Percent Solids / Turbidity
- End Product Quality Control and Lot Certification
- Crystal Growth Analysis
- Replace Laser and Sieve with Two Dimensional Distribution by Shape

SPECIFICATIONS

Video Formats: Gigabit Ethernet
Shutter Speed: Variable Up to 10 micro Seconds
Ratings: Lab, NEMA 4 Weather Proof, Explosion Proof or Flame Proof
Particle size: .7 micron to 3000 micron
Connections: NPT, Tube or Sanitary
Input power: 120 V AC 60Hz or 230 V AC 50Hz

CANTY

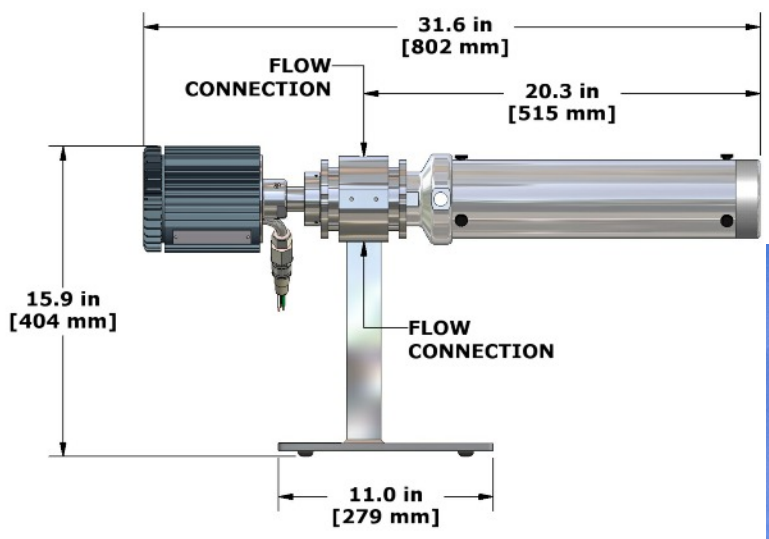
JM Canty Inc
JM Canty Intl Ltd

Buffalo, NY USA
Dublin, Ireland

Ph: (716) 625 4227
Ph: +353 (01) 882 9621

Fax: (716) 625 4228
Fax: +353 (01) 882 9622

DIMENSIONAL INFORMATION



Ordering Information

HOW TO ORDER: Select the appropriate symbols and build a part number as shown:

EXAMPLE:

TRU - A G 1 K 1 1 B 1 1 A Z

<p>CONNECTION TYPE</p> <p>A - 1/4" Female NPT B - 1/2" Female NPT D - 1/4" Swagelok Tube Connection E - 1/2" Swagelok Tube Connection F - 1/2" Sanitary (Triclamp)</p>	<p>VIDEO SYSTEM FORMAT</p> <p>A - EIA (U.S. B&W) 640x480 B - NTSC (U.S. Color) 640x480 C - CCIR (European B&W) 768x576 D - PAL (European Color) 768x576 E - Gigabit Ethernet (B&W) 650x490 F - Gigabit Ethernet (Color) 650x490 G - Gigabit Ethernet (B&W) 1600x1200 H - Gigabit Ethernet (Color) 1600x1200</p>	<p>O-RING MATERIAL</p> <p>A - Viton® B - Buna C - EPDM D - Silicone E - Kalrez® F - Chemraz®</p>																					
<p>ENVIRONMENTAL RATING</p> <p>1 - Lab Unit (General Purpose Enclosure) 2 - NEMA 4 Weatherproof, IP 66 3 - Lab Plus (Ethernet Remote Control) 4 - Explosion Proof (U.S. 120V) or Flame Proof (Europe 230V)</p>	<p>THERMAL REGULATION</p> <p>1 - None 2 - External Band Heaters</p>	<p>FLOW PATH SPACING CONTROL</p> <p>1 - Variable Gap (5µm-3,175µm), Adjustable with Sample Present 2 - Fixed Gap (3,175µm), 2" Wide Cell Width 3 - Fixed Gap (3,175 µm), 1/2" Wide Cell Width</p>																					
<p>SYSTEM ILLUMINATION</p> <p>K - Backlight L - Darkfield M - Cross Polarized N - Amplified / Focused P - Phase Contrast Q - Front & Backlight</p> <p>When picking options K, L, or M, all three are included and the selected option will be factory installed.</p>	<p>WETTED METAL MATERIAL</p> <p>B - 316L Stainless Steel D - Hastelloy® C276 or equal E - Hastelloy® C-22® or equal</p>	<p>INPUT POWER</p> <p>1 - 120 V AC / 60Hz 2 - 230 V AC / 50Hz</p>																					
<p>PARTICLE SIZE RANGE</p> <table border="1" style="width: 100%; border-collapse: collapse;"> <thead> <tr> <th></th> <th style="text-align: center;">P.S. View</th> <th style="text-align: center;">P.S. Measure</th> </tr> </thead> <tbody> <tr> <td>1 -</td> <td style="text-align: center;">(.2µm* - 2400µm)</td> <td style="text-align: center;">(.4µm*-480µm)</td> </tr> <tr> <td>2 -</td> <td style="text-align: center;">(.3µm* - 3400µm)</td> <td style="text-align: center;">(.6µm*-680µm)</td> </tr> <tr> <td>3 -</td> <td style="text-align: center;">(.4µm*- 2,175µm)</td> <td style="text-align: center;">(1µm - 435µm)</td> </tr> <tr> <td>4 -</td> <td style="text-align: center;">(.6µm*- 3,075µm)</td> <td style="text-align: center;">(1.5µm - 615µm)</td> </tr> <tr> <td>5 -</td> <td style="text-align: center;">(.5µm*- 2,175µm)</td> <td style="text-align: center;">(1.5µm - 435µm)</td> </tr> <tr> <td>6 -</td> <td style="text-align: center;">(.8µm - 3,075µm)</td> <td style="text-align: center;">(2.0µm - 615µm)</td> </tr> </tbody> </table> <p>When picking options [1 or 2], [3 or 4], [5 or 6], the system includes a second lens for the other range in the bracket as well. The selected option will be factory installed. For larger sizes, please refer to the INFlow™ sheet, TA10601-1.</p>		P.S. View	P.S. Measure	1 -	(.2µm* - 2400µm)	(.4µm*-480µm)	2 -	(.3µm* - 3400µm)	(.6µm*-680µm)	3 -	(.4µm*- 2,175µm)	(1µm - 435µm)	4 -	(.6µm*- 3,075µm)	(1.5µm - 615µm)	5 -	(.5µm*- 2,175µm)	(1.5µm - 435µm)	6 -	(.8µm - 3,075µm)	(2.0µm - 615µm)	<p style="text-align: center;">* Verify Required Wavelength of Light for Application. Visible Light Allows for Particles .7 Micron(µm) and Larger.</p>	
	P.S. View	P.S. Measure																					
1 -	(.2µm* - 2400µm)	(.4µm*-480µm)																					
2 -	(.3µm* - 3400µm)	(.6µm*-680µm)																					
3 -	(.4µm*- 2,175µm)	(1µm - 435µm)																					
4 -	(.6µm*- 3,075µm)	(1.5µm - 615µm)																					
5 -	(.5µm*- 2,175µm)	(1.5µm - 435µm)																					
6 -	(.8µm - 3,075µm)	(2.0µm - 615µm)																					

<b style="font-size: 2em; color: #0056b3;">CANTY JM Canty Inc JM Canty Intl Ltd	Buffalo, NY USA Dublin, Ireland	Ph: (716) 625 4227 Ph: +353 (01) 882 9621
Ph: (716) 625 4228 Fax: +353 (01) 882 9622		Fax: (716) 625 4228 Fax: +353 (01) 882 9622