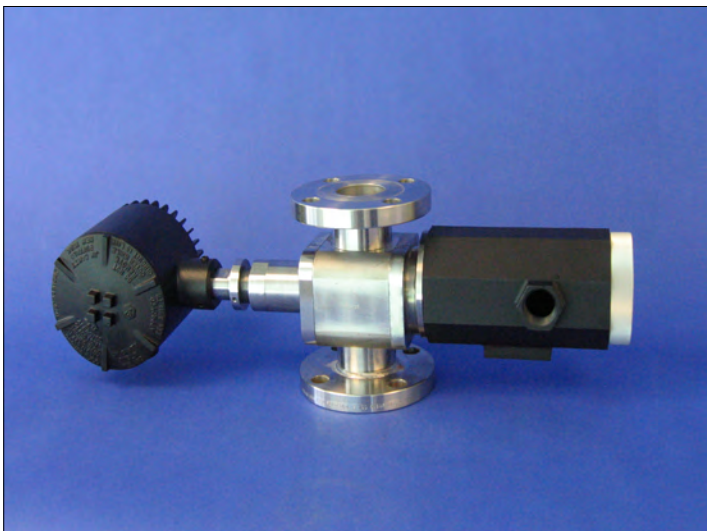


CANTY

PROCESS TECHNOLOGY

INFLOW™ - WATER IN OIL ANALYSIS



OIL IN WATER

The Cauty Inflow™ is an excellent tool for oil environments to determine concentration, particle size and count of water and solids in crude oil. Wax crystals and paraffin can be monitored too.

THE CANTY ADVANTAGE

The CANTY Inflow™ is a vision-based camera system used with the CANTY Vector System image processor for water in oil concentration and size measurement in a lab environment / at-line / in-line process. The CautyVision™ Software accurately measures multiple aspects of the WiO from water / solids / gas independent of each other for accurate data. In comparison to a capacitance monitor, which measures only oil and is affected by solids and gas in the stream, the CautyVision™ software can identify the differences and the customer can visually verify the readings. The Inflow™ can be calibrated with the customer's current lab method to make for easy installation in the field. Droplet size is critical to help operators and engineers know how to separate out the water and what filter size is needed for the solids. Chemical companies will know if the chemicals they are injecting are agglomerating the water. Video recording is an option for later analysis. Paraffins can be monitored and determined when they start to form wax crystals to help pipeline companies increase the flow and prevent blockage. The Inflow is an In-line analysis system to make sure production samples are not skipped over due to lack of sample time available!

FEATURES

- PPM / PPB Values
- Particle Size Distribution Of Water / Sand
- 10 ft/s Flow Velocity
- Real Time Analysis
- Easy To Use For Operators And Lab
- Multiple Line Size Available
- Eliminate Errors Associated With Capacitance
- Reduce Analysis Wait Time For Operators
- Particle Size = .7 Microns And Greater
- Visual Verification
- Complete Skid Mount Design
- Data Can Be Stored With Images Or Video
- All Data Is Stored On Excel Or In A Database For Later Use And Easy Storage
- Settings Used For Each Sample Can Be Saved So System Setup Is Repeatable
- **NOT AFFECTED BY GAS OR SOLIDS**

APPLICATIONS

- Oil Sands
- Crude Oil
- Solids in Oil
- Wax in Oil
- Lab / At-Line / In-Line
- Replaces Existing Capacitance Units
- Tank Farms
- Many, many more!

BENEFITS

- Variable Size available From 1/2" - 10"
- Reading Independent Of Gas & Solids
- Monitor Wax Crystals
- Record Video For Later Analysis
- Optional Save Video & Images If Needed
- **Gallons per Minute Flow Rates**

SPECIFICATIONS

- Power: 120 VAC / 60 Hz (230 VAC / 50 Hz)
- Ethernet Camera Resolution

ANALYSIS WITH CANTYVISION

- CautyVision™ System Can Measure And Control Your Process Parameters
- Inflow™ Systems Use A live Video Data
- CautyVision™ Can Perform Concentration / Particle Size / Count Functions
- Microsoft Windows Based Operating System
- Ethernet OPC or 4-20 mA Devices

CANTY

Buffalo, NY USA
Ph: (716) 625 4227

Dublin, Ireland
Ph: + 353 (01) 882 9621

Phuket, Thailand
Ph: + 66 (83) 968 9548

MOUNTING CONNECTIONS



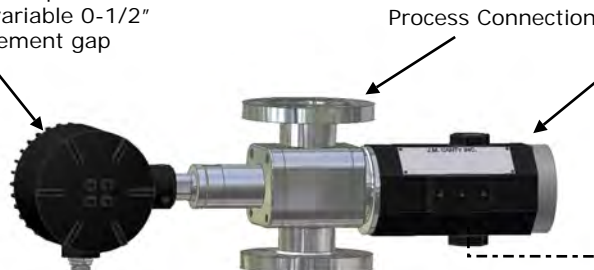
FLANGE CONNECTION



SWAGELOK® CONNECTION

TYPICAL PACKAGE

Canty LED- Provides optimal backlighting with variable 0-1/2" [12.7mm] measurement gap



Process Connection

Ethernet Vision System for product measurement

Ethernet Network Connectivity

Notes:

1. Camera and Light PSUs are not shown but must be located within 100 feet of the unit. The Camera Power Supply enclosure has the same environmental rating as the system.
2. CantyVisionClient™ Software is included but the customer provides the PC which is not included with the system. Reference Document TA10592-1 for computer requirements.

Ordering Information

HOW TO ORDER: Select the appropriate symbols and build a part number :

EXAMPLE:

V W 6 C 1 1 1 A A 1 V

CONNECTION TYPE

- B - Swagelok®
- C - Flange (ANSI/DIN)
- E - NPT (Female)

CONNECTION SIZE

- | | |
|-------------------|-----------------|
| 0 - 1/2" (12.7mm) | 4 - 4" (100mm) |
| 1 - 1" (25mm) | 6 - 6" (150mm) |
| 5 - 1.5" (38mm) | 8 - 8" (200mm) |
| 2 - 2" (50mm) | 9 - 10" (254mm) |
| 3 - 3" (80mm) | A - 12" (305mm) |

WETTED METAL MATERIAL

- 1 - 316L Stainless Steel
- 2 - Hastelloy® C276 or equal
- 3 - Hastelloy® C-22® or equal
- 4 - Carbon Steel

NON-WETTED METAL MATERIAL(PRESSURE BEARING)

- 0 - Carbon Steel
- 1 - 300 Series Stainless Steel

INTERNAL SEAL MATERIAL

- | | |
|--------------|--------------|
| B - BUNA | N - NEOPRENE |
| V - VITON® | K - KALREZ® |
| S - SILICONE | C - CHEMREZ® |
| E - EPDM | |

ENVIRONMENTAL RATING

- 1 - NEMA 4 WEATHERPROOF
- 2 - IP 66
- 3 - EXPLOSION PROOF
- 4 - FLAME PROOF

ANSI OR DIN PRESSURE RATING / FLANGE PATTERN

- | ANSI | DIN |
|-------------|------------|
| A - 150 PSI | D - 10 BAR |
| B - 300 PSI | E - 16 BAR |
| C - 600 PSI | F - 25 BAR |
- Consult factory for pressure rating up to 10,000 PSI.

INPUT POWER

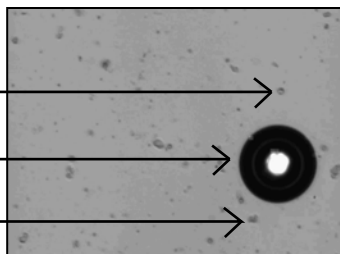
- A - 120 V AC / 60Hz / 250W
- B - 230 V AC / 50Hz / 250W

CRUDE OIL IMAGE

WATER DROPLET

GAS BUBBLE

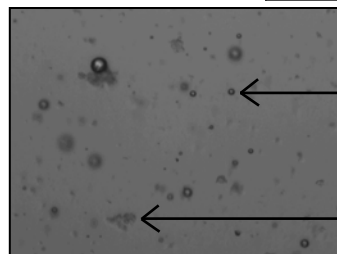
SOLID PARTICLE



WAX IN OIL IMAGE

WATER DROPLET

WAX PARTICLE



CANTY

Buffalo, NY USA
Ph: (716) 625 4227

Dublin, Ireland
Ph: + 353 (01) 882 9621

Phuket, Thailand
Ph: + 66 (83) 968 9548

www.jmcanty.com

Document P/N: TA11500-1025