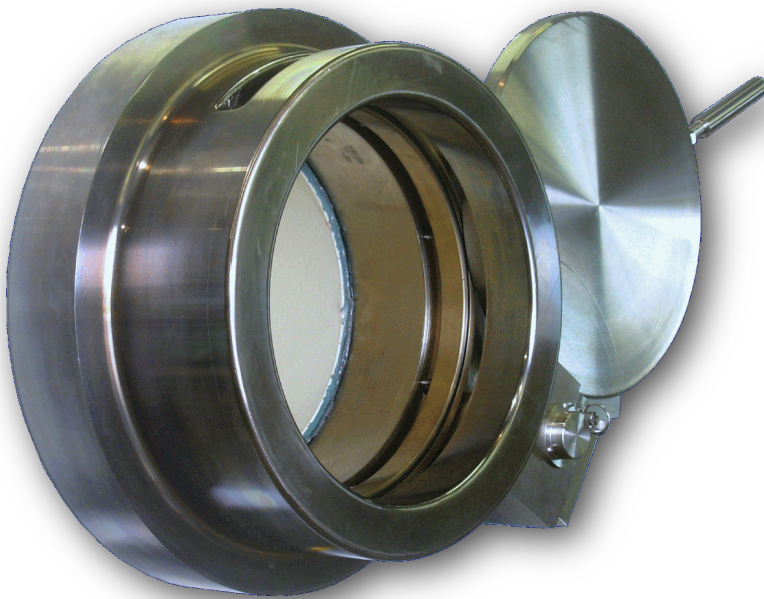


# CANTY

## PROCESS TECHNOLOGY

### QUICKSAFE PIG LAUNCH

Subsea Quick Opening Closure - PIG Launching and Retrieval



#### THE CANTY ADVANTAGE

The Canty QuickSafe Pig Launch is suitable for both positive and negative pressure sealing without modification, making it ideal for sub-sea, top side, and high pressure applications. The easily replaceable seal ring carries two o-rings and is spring loaded to provide initial seal contact. One o-ring seals against the door and the other seals against the wall of the cylinder. The design is suitable for high pressure, low pressure, or vacuum service. The closure can be used for either internal or external service and provide safe, instant access to any vessel. Originally designed to meet the stringent safety requirements of Hyperbaric Diving Systems where leaking or improper opening is critical.

#### QUICKCLOSURE HISTORY

The Canty QSPL was originally designed for use on hyperbaric chambers as a means to access and support a chamber safely while under pressure. It has served the medical, diving and research industries for over 40 years as the standard in safety and convenience. A leakage on this application could cause a fatal decompression.

#### CANTY ENGINEERING

The Canty QSPL is the safest, quickest opening closure ever designed. What makes it unique is the method for door engagement. All other types of closures have doors that swing out or slide out away from the end of the reactor barrel in the same direction that the pressure force acts. If pressure is not completely relieved the door can blow open with great force and velocity and the potential for catastrophic injury to personnel. The QSPL slides out of the barrel at a direction perpendicular to the pressure force, and therefore the Canty door never retains the potential energy from the process pressure and can never be accelerated by residual pressure. Because the door moves perpendicular to the pressure a separate safety interlock is not required to meet ASME and PED standards.

#### FEATURES

- Conforms to ASME Section B 31.1, B31.3 and PED
- Pressure ratings from full vacuum to 10,000 psi, 300F
- No bolting or Torqueing
- Zero Leak Closure
- Dual Seal
- Welded, ANSI or DIN mounting
- Duplex Stainless, Super Duplex, and various Alloys
- Sizes 1" - 20" available
- Optional NACE and corrosion liners

#### ADVANTAGES

- Always-safe Door Actuation
- Fail-safe Design - will not blow out if improperly used
- One-motion operation, no training
- Separate Safety interlock not required
- Positive and negative pressure sealing
- Door moves laterally, the only moving part
- No space required in front of closure for opening - minimizes space

#### APPLICATIONS

- Subsea (submersible opening option)
- Pig Launching & Retrieval
- Filter canisters
- Core sample testing
- Vessel Access
- Inspection Port

**CANTY**

JM Canty Inc  
JM Canty Intl Ltd

Buffalo, NY USA  
Dublin, Ireland

Ph: (716) 625 4227  
Ph: +353 (01) 882 9621

Fax: (716) 625 4228  
Fax: +353 (01) 882 9622

[www.jmcanty.com](http://www.jmcanty.com)

## Ordering Information

HOW TO ORDER: Select the appropriate symbols and build a part number as shown:

### EXAMPLE:

QSPL - B 2 A S S B A 1 2

#### MODEL:

B - ROLLING DOOR FLANGE BOLTED  
W - ROLLING DOOR WELDED

#### SIZE

1", 2", 3", 4", 6", 8", 10", 12", 14", 16",  
18", 20"

#### PRESSURE

A - 150 PSI  
B - 300 PSI  
C - 600 PSI  
Z - Others (consult factory through  
10,000 psi)

#### FORGING MATERIAL (WETTED)

S - 316L STAINLESS STEEL

#### SEAL RING MATERIAL (WETTED)

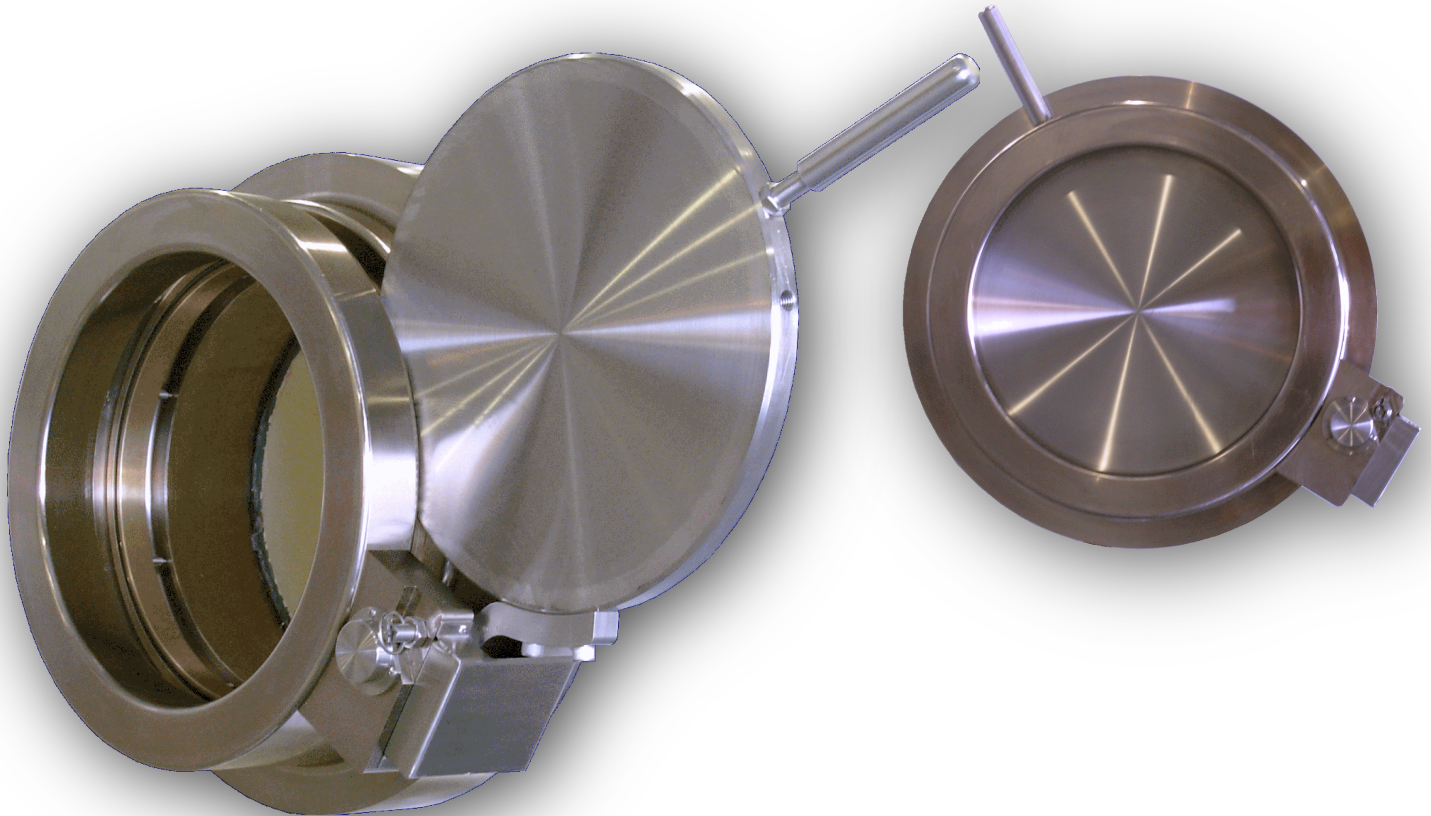
S - 316L STAINLESS STEEL

#### OPENING

1 - RIGHT OPENING  
2 - LEFT OPENING

#### O-RING MATERIAL (WETTED)

1 - Buna  
2 - Viton  
3 - Silicone  
4 - EPDM  
5 - Neoprene



# CANTY

JM Canty Inc  
JM Canty Intl Ltd

Buffalo, NY USA  
Dublin, Ireland

Ph: (716) 625 4227  
Ph: +353 (01) 882 9621

Fax: (716) 625 4228  
Fax: +353 (01) 882 9622

[www.jmcanty.com](http://www.jmcanty.com)

Document P/N: TA11500-1006 Rev. 1