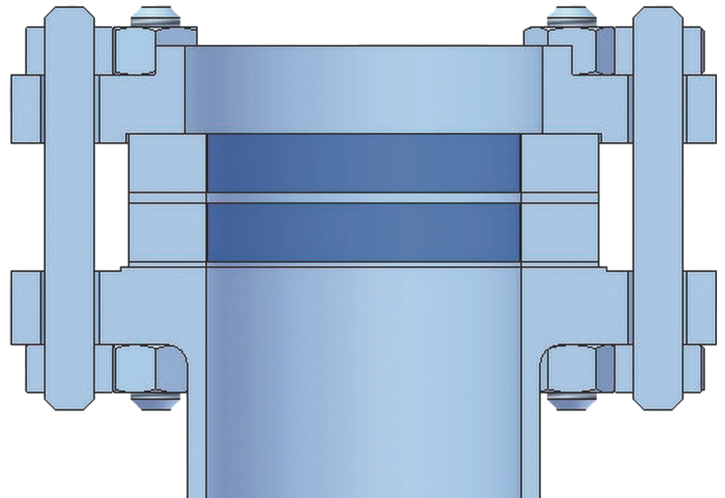
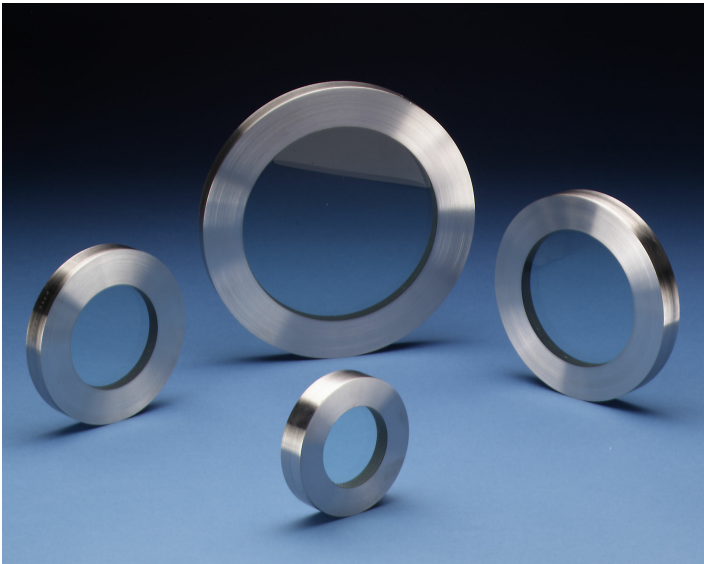


CANTY

PROCESS TECHNOLOGY

DUAL HIGH TEMPERATURE FUSEVIEW™ SIGHT GLASS



THE CANTY ADVANTAGE

CANTY Fuseview™ dual high temperature sight glasses have been engineered to meet all your process and safety needs. All standard Fuseviews™ are designed and tested to ensure the safest product available. CANTY can provide certification of material and testing if required, typical of ASME code requirements for process vessels.

UNMATCHED SAFETY, RELIABLE

All CANTY sight glasses feature the Fuseview™ window. Our unique fused glass windows far exceed all conventional tempered glass windows in safety and performance. By fusing glass to metal, a high pressure, high safety, hermetic seal is formed. The fused glass technology ensures safety with every Fuseview™. What's more, our windows can easily be removed for cleaning. CANTY windows do not have to be discarded, as do traditional tempered glass windows. CANTY fused glass windows can be re-used again and again.

The dual high temperature design features two standard windows with a Grafoil® gasket in between them, where the outer window serves as a barrier against thermal shock.

FEATURES

- Carbon Steel, Stainless Steel, Alloy C, Hastelloy®C276 or Hastelloy®C22 fuseview metal material
- Pressure rating to 300 PSI [16 bar]
- Temperatures to 650°F [343°C]
- ANSI and DIN sizes available
- Special sizes available per drawing request
- ANSI flanged units are designed to ASME code
- DIN flanged units have CE and are designed to the PED standard

ADVANTAGES OF THE FUSEVIEW™

- Extremely high strength due to radial compression on the hermetically sealed glass
- Very high impact strength and thermal shock resistance due to prestressing
- Operates under positive or negative pressure
- Certification on material and pressure rating is available, typical of ASME code requirements.

CANTY FUSEVIEW™ VS. OTHERS

- No loss of glass temper over time
- Scratches do not affect safety or life
- Unlike tempered glass, a FuseView™ will not blow out if the surface is damaged
- No extra gaskets, shims, packing, or retaining rings to worry about

CANTY

Buffalo, NY USA
Ph: (716) 625 4227

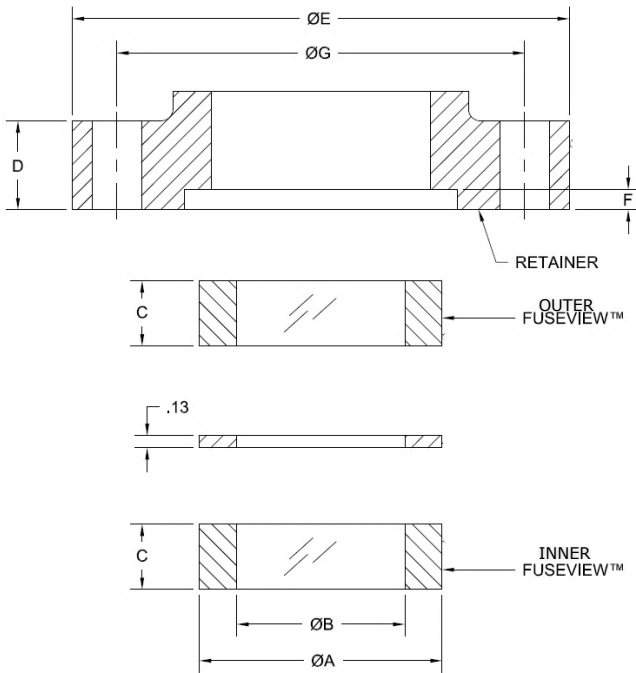
Dublin, Ireland
Ph: + 353 (01) 882 9621

Phuket, Thailand
Ph: + 66 (83) 968 9548

www.jmcanty.com

Document P/N: TA11500-1085 Rev. 1

FUSEVIEW™ DUAL HIGH TEMP SIGHT GLASS SPECIFICATIONS



MAX TEMPERATURE RATINGS	
150 PSI [10 bar]:	
HC, C276, C22, CS INNER; CS OUTER; ALL SIZES	600°F [315°C]
HC, C276, C22 FOR BOTH INNER AND OUTER, 1" - 6" [25mm - 150mm] SIZES	650°F [343°C]
ANY MATERIAL COMBO, 8" [200mm] SIZE	600°F [315°C]
300 PSI [16 bar]:	
ANY MATERIAL COMBO, 1" - 6" [25mm - 150mm]	600°F [315°C]

150 PSI MODELS										
SIZE in.	ØA in.	ØB in.	C in.	D in.	ØE in.	F in.	ØG in.	QTY.	Ø in.	
1	2	1.13	0.75	0.56	4.25	0.13	3.13	4	0.63	
1.5	3	1.5	0.75	0.69	5	0.13	3.88	4	0.63	
2	3.63	2.13	0.75	0.75	6	0.13	4.75	4	0.75	
2.5	4	2.5	0.75	0.88	7	0.13	5.5	4	0.75	
3	5	3	0.75	0.94	7.5	0.13	6	4	0.75	
3.5	5.5	3.5	0.75	0.94	8.5	0.13	7	8	0.75	
4	6	4	0.75	0.94	9	0.13	7.5	8	0.75	
5	7.5	5	0.75	0.94	10	0.13	8.5	8	0.88	
6	8.38	6	0.75	1	11	0.13	9.5	8	0.88	
8	10.5	8	0.9	1.13	13.5	0.13	11.75	8	0.88	

300 PSI MODELS										
SIZE in.	ØA in.	ØB in.	C in.	D in.	ØE in.	F in.	ØG in.	QTY.	Ø in.	
1	2	1.13	0.75	0.68	4.88	0.13	3.5	4	0.75	
1.5	3	1.5	0.75	0.81	6.13	0.13	4.5	4	0.88	
2	3.63	2.13	0.75	.88	6.5	0.13	5	8	0.75	
2.5	4	2.5	0.75	1	7.5	0.13	5.88	8	0.88	
3	5	3	0.75	1.13	8.25	0.13	6.63	8	0.88	
3.5	5.5	3.5	0.75	1.19	9	0.13	7.25	8	0.88	
4	6	4	0.9	1.25	10	0.13	7.88	8	0.88	
5	7.5	5	0.9	1.38	11	0.13	9.25	8	0.88	
6	8.38	6	0.9	1.44	12.5	0.13	10.63	12	0.88	

10 BAR MODELS										
SIZE mm	ØA mm	ØB mm	C mm	D mm	ØE mm	F mm	ØG mm	QTY.	Ø mm	
25	68	38	19	14	115	2	85	4	14	
32	76	38	19	16	140	2	100	4	18	
40	88	51	19	16	150	2	110	4	18	
50	92	54	19	17	165	2	125	4	18	
65	122	76	19	18	185	2	145	4	18	
80	127	76	19	18	200	2	160	8	18	
100	152	102	19	20	220	2	180	8	18	
150	213	152	19	22	285	2	240	8	22	
200	267	203	25	22	340	2	295	8	22	

16 BAR MODELS										
SIZE mm	ØA mm	ØB mm	C mm	D mm	ØE mm	F mm	ØG mm	QTY.	Ø mm	
25	68	38	19	14	115	2	85	4	14	
32	76	38	19	16	140	2	100	4	18	
40	88	51	19	16	150	2	110	4	18	
50	92	54	19	17	165	2	125	4	18	
65	122	76	19	18	185	2	145	8	18	
80	127	76	19	18	200	2	160	8	18	
100	152	102	19	20	220	2	180	8	18	
150	213	152	19	22	285	2	240	8	22	

Ordering Information

HOW TO ORDER: Select the appropriate options and build a part number as shown:

S7 — **1** — **H** —

PRESSURE:

ANSI:

A = 150 psi

B = 300 psi

DIN:

1 = 10 bar

2 = 16 bar

SIZE (VIEW/ O.D.):

ANSI:

B = 1" (1" / 2")

C = 1.5" (1.5" / 3")

E = 2" (2.13" / 3.63")

F = 2.5" (2.5" / 4")

H = 3" (3" / 5")

I = 3.5" (3.5" / 5.5")

J = 4" (4" / 6")

P = 5" (5" / 7.5")

R = 6" (6" / 8.38")

V = 8" (8" / 10.5")*

DIN:

X = 25mm (38mm / 68mm)

Y = 32mm (38mm / 76mm)

Z = 40mm (51mm / 88mm)

1 = 50mm (54mm / 92mm)

2 = 65mm (76mm / 122mm)

3 = 80mm (76mm / 127mm)

4 = 100mm (102mm / 152mm)

6 = 150mm (152 mm / 213mm)

7 = 200mm (203mm / 268mm)*

*150 psi [10 bar] only

NON-WETTED FUSEVIEW RING (outer):

A = Carbon Steel

B = 316L Stainless Steel*

C = Alloy C

D = Hastelloy® C276 or equal

RETAINING FLANGE (non-wetted):

0 = No flange

1 = Carbon Steel

2 = 316L Stainless Steel

WETTED SURFACE FINISH (32µin standard and non-wetted):

0 = 32 µin [.81 µm] Ra

B = 20 µin [.51 µm] Ra (BPE-SF1)

C = 15 µin [.38 µm] Ra

L = 20 µin [.51 µm] Ra Electropolished (BPE-SF5)

M = 15 µin [.38 µm] Ra Electropolished (BPE-SF4)

WETTED FUSEVIEW RING (inner):

A = Carbon Steel

B = 316L Stainless Steel*

C = Alloy C

D = Hastelloy® C276 or equal

E = Hastelloy® C22

*Canty reserves the right to upgrade to Hastelloy® C-family of alloys or equal at their own cost.

CANTY

Buffalo, NY USA
Ph: (716) 625 4227

Dublin, Ireland
Ph: + 353 (01) 882 9621

Phuket, Thailand
Ph: + 66 (83) 968 9548

www.jmcanty.com

Document P/N: TA11500-1085 Rev. 1

All registered trademarks are the property of their respective owners.