

Color Analysis

Mouthwash

Sample Identity:

Sample A: Dark Blue Mouthwash

Sample B: Light Blue Mouthwash

Purpose:

In this application, the [MicroFlow™](#) system is used to monitor for the transition point at which mouthwash is no longer present during a water rinse of the process line. The goal is to produce less effluent and reduce waste water.

Discussion:

The MicroFlow™ system was presented with three phases consisting of a dark blue colored mouthwash, followed with a water rinse, and ending with a lighter blue mouthwash. At each transition point it is very evident, both visually and in the data, when the mouthwash or water has evacuated the system. Visually the image appears to have many swirls, Figure 3, when the mouthwash and water are mixing. The swirls in the image can be measured in the graph very easily, Figure 1. Once the streaking disappears the material is now at its homogenous state, Figure 4, either water or mouthwash.



Figure 2 - Image of Sample A

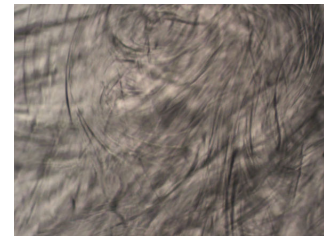


Figure 3 - Transition



Figure 4 - Image of Sample B

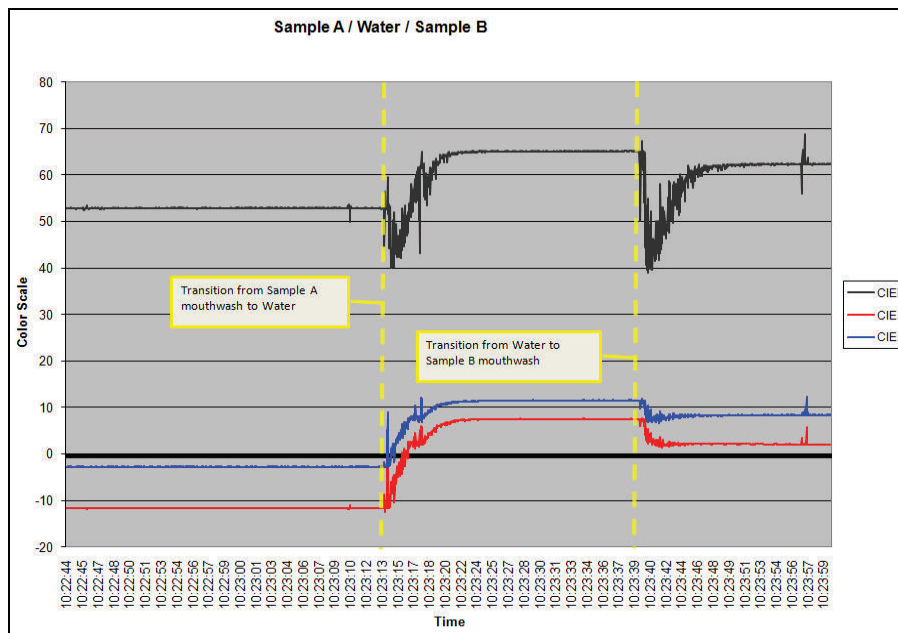


Figure 1 - Transition Graph with CIE Lab outputs