

CANTY

PROCESS TECHNOLOGY

TRIPORT™ LED LIGHT & SIGHT GLASS SYSTEM



THE CANTY ADVANTAGE

Need more nozzle space on your vessel??? The Canty Triport™ fiber optic cold LED lighting system has been designed to provide efficient, high output LED light in a cost effective package by combining vessel viewing with an easy access port. We use high quality fiber optics to transmit the LED light from our light source through the sanitary sight glass connection. The bundle tip covers less than 0.5 square inches which maximizes the available viewing area. All Triports™ feature Canty Fuseview™ technology. Our unique fused glass windows far exceed all conventional tempered glass and metal to glass press fit windows in safety and performance. By fusing glass to metal, a high pressure, highly safe, hermetic seal is formed which ensures maximum durability, performance and cleanliness.

FEATURES

- Sight glass, LED light and fiber optic bundle integrally mounted on a rotating bracket
- Tri-Clamp® window can be removed from ferrule and will remain supported by the Triport™ System.
- LED is highly energy efficient and maintenance free
- Fused Glass - safe process light
- 5+ year life expectancy of LED array
- 316L SS design can be C.I.P.
- Fiber optic light bundle technology
- One-piece sanitary construction Tri-Clamp® sight glass
- Special sizes and ratings available upon request
- ASME / BPE / USP / FDA Compliant

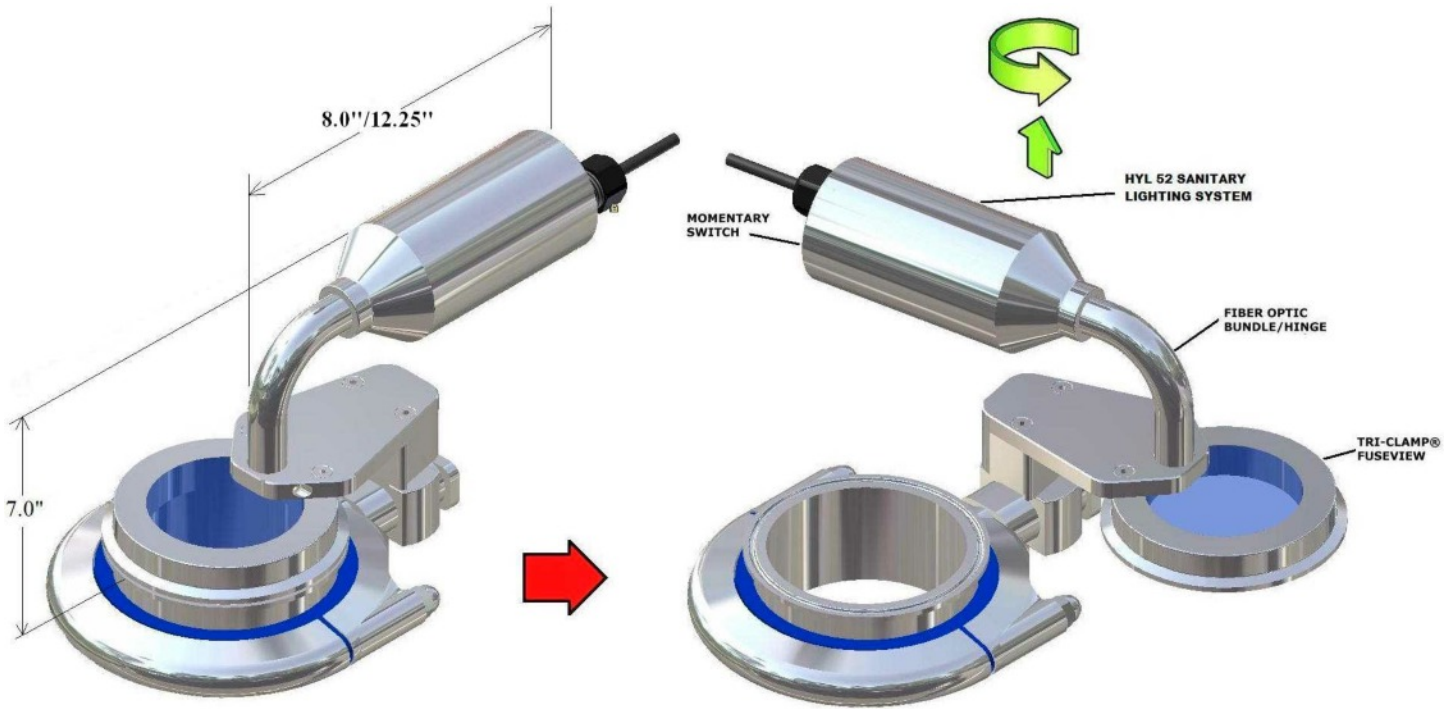
APPLICATIONS

- Bio Reactors
- Aseptic Tanks
- Sterile Process Vessels
- Sanitary Areas
- Portable Tanks
- Fermentors, Reactors and Sterilizers
- Freeze Dryers
- Many, many more

INDUSTRIES

- Biotech
- Pharmaceutical
- Dairy
- Food & Beverage

Triport™ LED Light & Sight Glass System Specifications



Ordering Information

HOW TO ORDER: Select the appropriate option codes and build a part number as shown:

EXAMPLE:

TriPort™ Light & Fuseview™
Sight Glass System

TP- **-LED**

LIGHT OPTIONS

S = 120V AC input Hyled 52 series, 316L SS, Integral Momentary switch, WP rating, .25A
 T = 120V AC input Hyled 52 series 316L SS, 42" Momentary switch, WP rating, .25A
 3 = No light. Includes mount hole for later upgrade.
 V = 230V AC input Hyled 52 series 316L SS, Integral Momentary switch, WP rating, .25A
 Y = 24V DC input Hyled 52 series 316L SS, Integral Momentary switch, WP rating, 1A

*For alternative input voltages & environmental classifications, consult factory.

FUSEVIEW™ SIGHT GLASS SPECIFICATIONS

0 = Flush Tri-Clamp® Fuseview™

Note: Clamp, ferrule and gasket not included.

TRI-CLAMP® CONNECTION SIZE

0 = 3 inch Tri-Clamp®
 1 = 4 inch Tri-Clamp®
 2 = 6 inch Tri-Clamp®
 3 = 8 inch Tri-Clamp®

CUSTOMER'S FERRULE O.D.

0 = 3.0" 4 = 6.0"
 1 = 3.224" 5 = 6.192"
 2 = 4.0" 6 = 8.0"
 3 = 4.256" 7 = 8.192"

WETTED FINISH (non-wetted = 32 µin [.81 µm] Ra)

0 = 20 µin [.51 µm] Ra (standard) (BPE-SF1)
 1 = 15 µin [.38 µm] Ra
 3 = 20 µin [.51 µm] Ra Electropolished (BPE-SF5)
 4 = 15 µin [.38 µm] Ra Electropolished (BPE-SF4)

FUSEVIEW™ MATERIAL (wetted)

0 = 316L Stainless Steel*
 1 = Hastelloy® C276 or equal
 2 = Hastelloy® C or equal
 3 = Hastelloy® C-22® or equal

*Canty reserves the right to upgrade to Hastelloy® C family of alloys or equal at their own cost.

SPECIFICATIONS

Power Req: 24V DC, 120-230V AC
 Housings: NEMA 4X Sanitary, IP 66
 316L SS Construction
 Wetted Materials: SS, Hastelloy®
 Power Supply: Integral. Remote options available

Light Source Size: 2.5" [64mm] diameter
 Tri Clamp® Sizes: Available in 3", 4", 6" and 8".
 Bracket: Integral Rotating Bracket Provided. +/-90 Horizontal Rotation.
 Ratings: Temperatures From -320° F (-195°C) to 400° F (205°C) Standard.

All registered trademarks are the property of their respective owners.

CANTY JM Canty Inc Buffalo, NY USA
 JM Canty Intl Ltd Dublin, Ireland

Ph: (716) 625 4227
 Ph: + 353 (01) 882 9621

Fax: (716) 625 4228
 Fax: +353 (01) 882 9622

www.jmcanty.com

Document P/N: TA9770-2 Rev. 2