

## CANTY PROCESS CAMERA QUESTIONNAIRE

Date of review: \_\_\_\_\_

Customer: \_\_\_\_\_

Representative: \_\_\_\_\_

Sketches Drawings included (yes/no): \_\_\_\_\_

(If customer can provide a drawing please provide electronically whenever possible)

### Engineering Data

Process Temp: \_\_\_\_\_ Ambient temp: \_\_\_\_\_

Pressure Rating: \_\_\_\_\_ Operating pressure: \_\_\_\_\_

Gasket or O-ring material acceptable: \_\_\_\_\_

Ethernet Camera

Wetted material: \_\_\_\_\_ Non-wetted material: \_\_\_\_\_

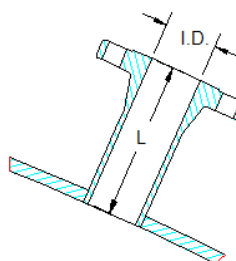
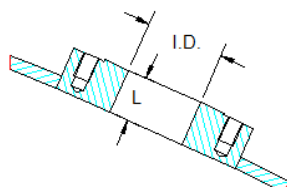
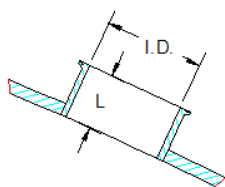
EXP or WP or FP: \_\_\_\_\_

Type of connection on customer's reactor:

\_\_\_ Triclamp

\_\_\_ Pad Flange

\_\_\_ Nozzle



Insertion length (L): \_\_\_\_\_ Inside diameter (I.D.): \_\_\_\_\_

Size and Class of mount: \_\_\_\_\_

Spray ring required: (yes/no) \_\_\_\_\_

Wetted material finish (if other than standard finish): \_\_\_\_\_

Input Power: \_\_\_\_\_

### Type of Application:

\_\_\_ View Only \_\_\_ Level \_\_\_ Cake Detection \_\_\_ Other (please provide info in notes)

Notes/additional information:

---

---

---

---

Sketch Area