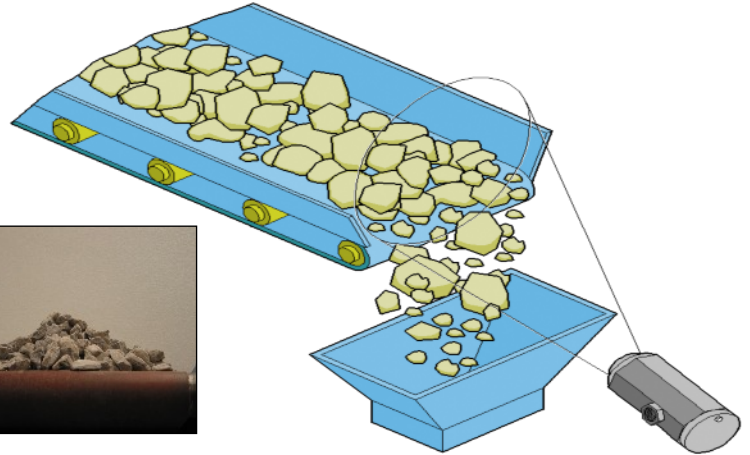
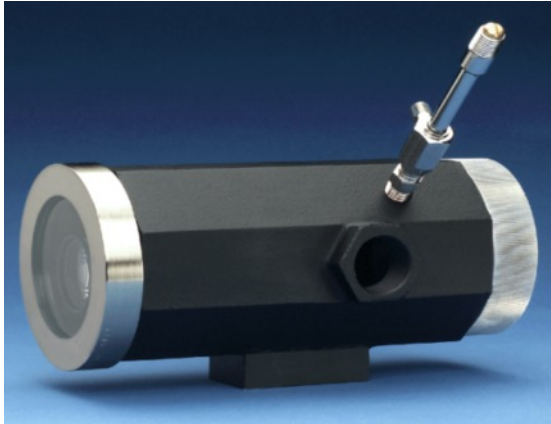


CANTY

PROCESS TECHNOLOGY

VISION BASED VOLUME MEASUREMENT



HOW IT WORKS

Eliminate costly maintenance for your belt scales!!! The CANTY Vision™ Volume Based Measurement System consists of a non-contact Ethernet camera that constantly analyzes product profile on a conveyor belt to produce an integrated volume with no maintenance required. The measurement results are output in a rate of weight per time through 4-20mA, OPC Interface, or Modbus where the user selects the measured units. The CANTY system avoids the large errors associated with belt scales and eliminates the need for frequent calibration. Material moisture content will not alter the volume solution the way a belt scale will be affected because it is a vision based system. The system is calibrated by initially viewing the empty belt. A full belt is then presented or simulated to provide the span. By properly locating the camera, the tracking position of the belt can also be provided. CANTY Vision™ looks for the edge of the belt in contrast to the head pulley. This gives an accurate belt position to within .01 inch (.25 mm) allowing for alarming and preventive maintenance. By locating the camera underneath the belt, a continual visual and optional inspection can be made to look for wearing, tearing and other conditions.

FEATURES

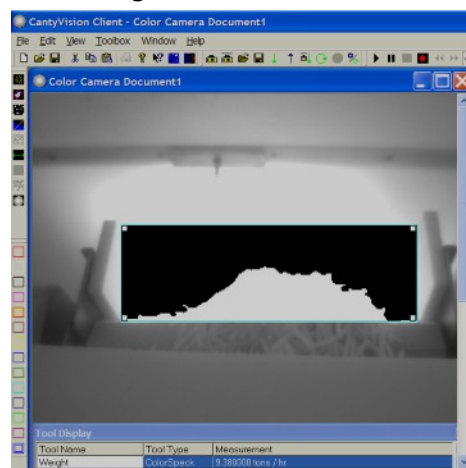
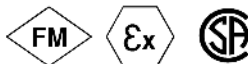
- +/- 1% Accuracy
- Full Range Analysis - Minute Feed Rates Through Tons/Min
- Simple, Quick Calibration - Less Than 5 Minutes
- Non Contact Measurement System
- Independent of Moisture Content
- No Re-calibration Required for Varying Samples

APPLICATIONS/ INDUSTRIES

- Aggregates/ Powders
- Abrasives
- Solids Handling
- Food
- Pharmaceutical
- Chemical



Raw Image



Processed Image

CANTY JM Cauty Inc | Buffalo, NY USA
JM Cauty Intl Ltd | Dublin, Ireland

Ph: (716) 625 4227
Ph: + 353 (01) 882 9621

Fax: (716) 625 4228
Fax: +353 (01) 882 9622

www.jmcanty.com

Document P/N: TA10487-100 Rev. 4

HOW TO ORDER: Select the appropriate symbols and build a part number as shown:

EXAMPLE: VTMSE5061-WP

VIDEO OUTPUT FORMAT
 VTMS - Vision System
 NTSC (North American Standard)
 VTME - Vision System
 PAL (European Standard)

CAMERA OPTIONS
 E - Ethernet camera, Color
 R - Color Neutral Camera

CAMERA APPLICATION
 5 - Surveillance

CAMERA PSU ENVIRONMENTAL RATING
 0 - Non WP or EXP camera power supply
 1 - WP camera power supply
 2 - EXP or FP camera power supply

CAMERA ENCLOSURE ENVIRONMENTAL RATING /INPUT VOLTAGE
 WP - Weather Proof, NEMA 4 and IP66 rated. User supplies 120V AC
 IP - Weather Proof, NEMA 4 and IP66 rated. User supplies 240V AC
 EXP - Explosion proof Class 1, Div. 1, Groups B, C, and D.
 Class II, Div. 1, Groups E, F and G. Flame proof EEx d IIC T6.
 User supplies 120V AC.
 FP - Explosion proof Class 1, Div. 1, Groups B, C and D,
 Class II, Div. 1, Groups E, F and G. Flame proof EEx d IIC T6.
 User supplies 240V AC.

ADDITIONAL OPTIONS
 1 - No additional options
 2 - Cooling Tube
 3 - Spray Ring
 4 - Spray Ring and Cooling Tube

LENS OPTION AND APPROXIMATE LENS VIEW ANGLES
 1 - Manual iris lens with standard view angle, 41°H x 31°V
 2 - Manual iris lens with wide view angle, 69°H x 53°V
 3 - Auto iris lens with wide view angle, 58°H x 45°V
 6 - Manual iris lens with narrow view angle, 7°H x 5°V
 7 - 6x Zoom Lens with Auto Iris, 8 - 48mm FL
 Provides view angles: 43°H x 33°V at 8mm
 8°H x 6°V at 48mm



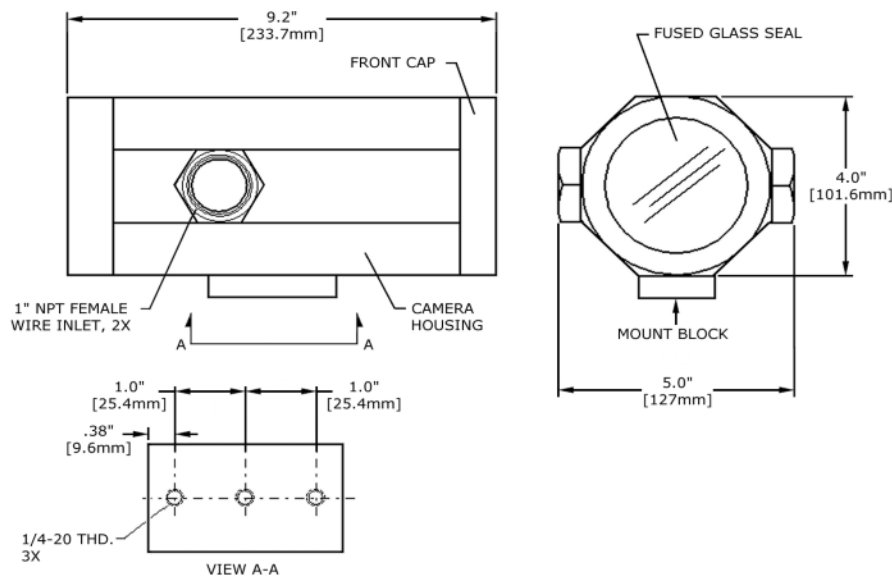
Select Lens View Angle for the Vision System Camera using chart below which indicates distance from belt that camera should be mounted for various combinations of lens View Angles and belt widths.

Belt Width

Lens View Angle

	12 in. Belt	18 in. Belt	24 in. Belt	30 in. Belt	36 in. Belt	40 in. Belt	48 in. Belt
41° (H) X 31° (V)	24 in.	36 in.	48 in.	60 in.	72 in.	84 in.	96 in.
69° (H) X 53° (V)	13 in.	20 in.	26 in.	33 in.	40 in.	46 in.	53 in.
22° (H) X 17° (V)	44 in.	66 in.	-	-	-	-	-

DIMENSIONAL INFORMATION



CANTY

JM Canty Inc
 JM Canty Intl Ltd

Buffalo, NY USA
 Dublin, Ireland

Ph: (716) 625 4227
 Ph: + 353 (01) 882 9621

Fax: (716) 625 4228
 Fax: +353 (01) 882 9622

www.jmcanty.com