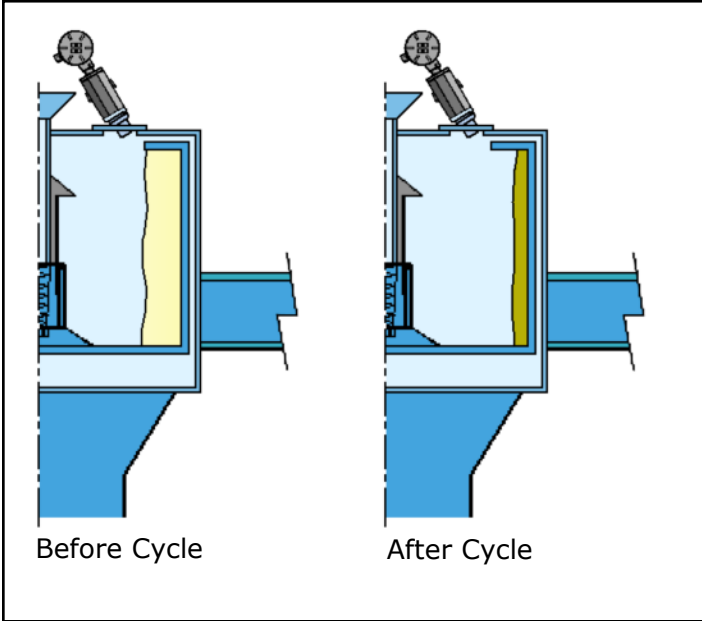


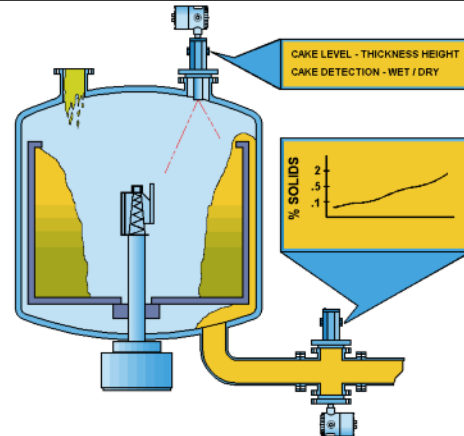
CANTY

PROCESS TECHNOLOGY

CENTRIFUGE CAMERA CONTROL



DECANTER / INVERTED BASKET STYLE

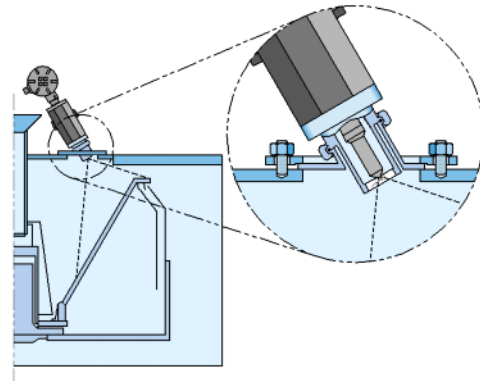


The Cauty Camera / Light combination analyzes the liquid centrate discharge from the centrifuge to assess color, percentage of solids, and presence of broken particulates, delivering the necessary 4-20mA output for continuous control. Additionally, cake dryness can be evaluated by monitoring the reduction in liquid flow. Cleaning is facilitated by a dedicated spray tube.

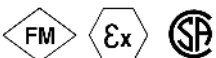
BASKET / PEELER STYLE

The Cauty Camera / Light combination is Tri-clamp® mounted on to the existing light or sight port of the centrifuge to allow continuous internal viewing from the control room. In the control room, the Vector™ image processing computer will analyze this view and provide a 4-20mA output of fill level, filtering level, and a separate cake (solids) detection signal. The level control allows for consistent batching to the centrifuge. The cake detection 4-20mA output signal provides for immediate detection of solids, which prevent the cake from cracking. This means higher product yield due to fewer washes, and ultimately better product quality.

CONTINUOUS / PUSHER STYLE



The Cauty Camera / Light combination monitors and manages the color line on this type of centrifuge, reducing operator error, enhancing recovery, and decreasing washing liquid by providing a continuous 4-20mA output signal. Moreover, a second reading from the Cauty Vector™ System can be utilized to regulate the surface color of the product.



CANTY

JM Cauty Inc | Buffalo, NY USA
JM Cauty Intl Ltd | Dublin, Ireland

Ph: (716) 625 4227
Ph: + 353 (01) 882 9621

Fax: (716) 625 4228
Fax: +353 (01) 882 9622

www.jmcanty.com

Ordering Information

HOW TO ORDER: Select the appropriate symbols and build a part number as shown:

Basket / Peeler Style

CBB1100-60D

| WETTED MATERIALS | |
|------------------|---------------------|
| B | 316 Stainless Steel |
| D | Hastelloy® C276 |

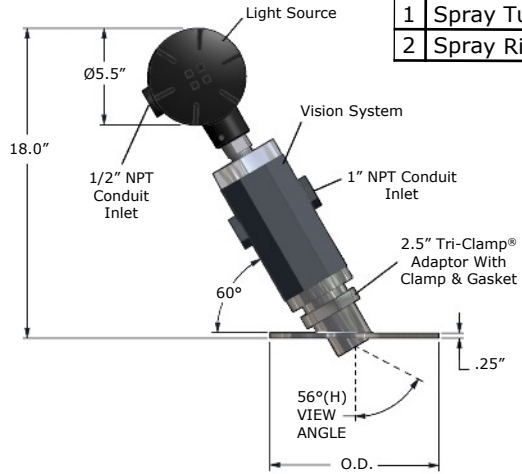
| CAMERA / LIGHT OPTIONS | |
|------------------------|--|
| 1 | 1SRDO (Toroidal light with dimmer) |
| 2 | 1SDO (Standard light with dimmer) |
| 3 | Remote flex bundle lighting (72" TYP.) |

| ENVIROMENTAL RATING | |
|---------------------|------------------------|
| 1 | Explosion Proof (120V) |
| 2 | Flame Proof (240V) |
| 3 | WP (120V) |
| 4 | IP (240V) |

| VIDEO OUTPUT | |
|--------------|------------------------|
| 0 | EIA U.S. B&W Format |
| 1 | CCIR Euro B&W Format |
| 2 | NTSC U.S. Color Format |
| 3 | PAL Euro Color Format |
| 4 | Ethernet |

| OUTER DIMENSIONS | |
|--|--|
| Specify Outer Diameter in inches i.e. 6" | |

| SPRAYTUBE | |
|-----------|------------|
| 0 | None |
| 1 | Spray Tube |
| 2 | Spray Ring |



Continuous / Pusher Style

Same part number structure as above. Consult factory if alternate mounting angle is required.

Decanter / Inverted Basket Style (Sightflow mount)

CDD13010B

| WETTED MATERIALS | |
|------------------|---------------------|
| B | 316 Stainless Steel |
| D | Hastelloy® C276 |

| MOUNTING OPTIONS | |
|------------------|------------|
| 1 | Flanged |
| 2 | Tri-Clamp® |

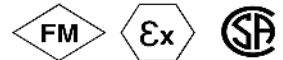
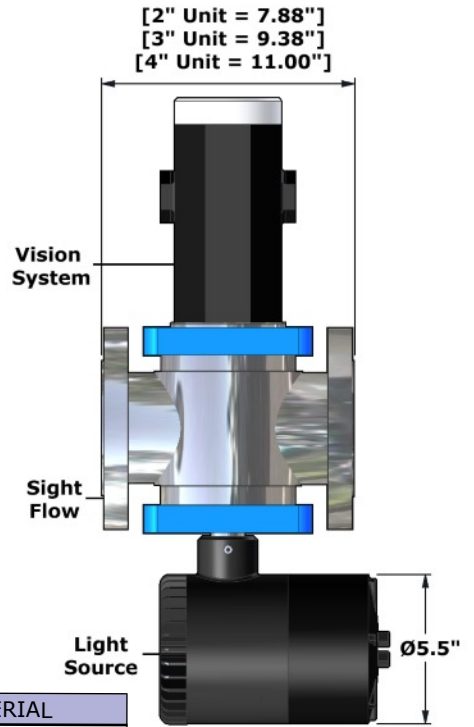
| SIZE | |
|------|---------------------------|
| 2 | 2" (only in Flange Mount) |
| 3 | 3" |
| 4 | 4" |

| VIDEO OUTLET | |
|--------------|------------------------|
| 0 | EIA U.S. B&W Format |
| 1 | CCIR Euro B&W Format |
| 2 | NTSC U.S. Color Format |
| 3 | PAL Euro Colour Format |
| 4 | Ethernet, US Format * |
| 5 | Ethernet, Euro Format* |

| ENVIROMENTAL RATING | |
|---------------------|------------------------|
| 1 | Explosion Proof (120V) |
| 2 | Flame Proof (240V) |
| 3 | WP (120V) |
| 4 | IP (240V) |

| GASKET MATERIAL | |
|-----------------|--------|
| B | Buna |
| V | Viton® |

| SPRAY RING | |
|------------|------------|
| 0 | None |
| 1 | Spray Ring |



CANTY

JM Canty Inc
JM Canty Intl Ltd

Buffalo, NY USA
Dublin, Ireland

Ph: (716) 625 4227
Ph: + 353 (01) 882 9621

Fax: (716) 625 4228
Fax: +353 (01) 882 9622

www.jmcanty.com
Document P/N TA9618-1 Rev. 7

* qty. 5 client CantyVisionClient™ software included. No Vector required.

All registered trademarks are the property of their respective owners.