

# CANTY

## PROCESS TECHNOLOGY

### LAB SOLIDSIZER™ WITH COLOR ANALYSIS



#### FEATURES

- Defect particle distribution by color, major, minor diameter, area, perimeter provided by the Canty CoreUnit™
- Scale for calibration of sample
- Adjustable lens magnification (sub micron to macro size in inches)
- Uniform surface lighting
- Shape Analysis
- Optional light filters available for wavelength sensitive materials

#### THE CANTY ADVANTAGE

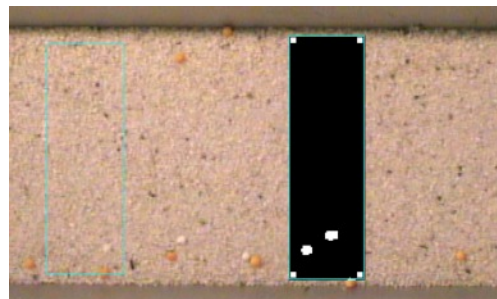
LAB SOLIDSIZER™ with Color Analysis is accomplished by using the fundamentals of the RGB and YUV color scale system. A Canty Lab analyzer is used to continually capture images as the flow of product moves over a vibratory feeder. The camera mounted over the stream is surrounded by a ring light for illumination of the stream. Since specs are a different color from the product they appear in, they are extremely easy for the Canty CoreUnit™ to differentiate. When a color speck occurs, the particle is easily detected and an optional 4-20mA output option can be provided. The CCD camera is connected to a Canty CoreUnit™ image processor for analysis.

#### APPLICATIONS

- Pharmaceutical powders
- Polymer pellets and beads
- Agricultural products
- Aggregates
- Detergents
- Glass bead applications
- Food products
- Agglomeration control
- Spray dryers and fluid bed applications
- End product Q.C. and lot certification
- Many, Many more!

#### SPECIFICATIONS

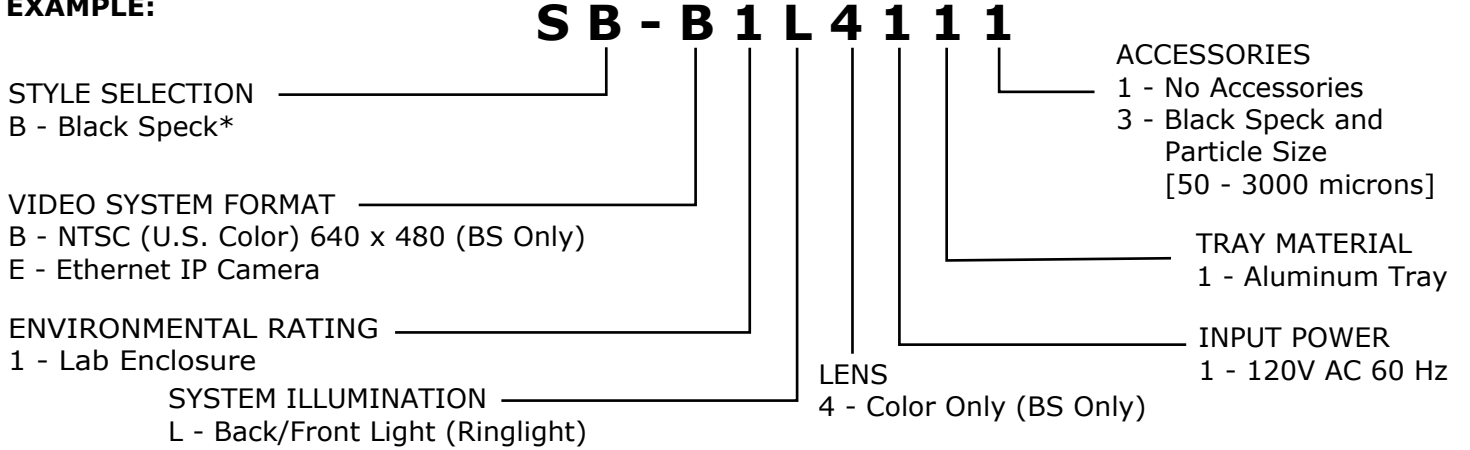
- Power: 120 VAC / 60 Hz (230VAC / 50 Hz)
- Shutter Speed: variable up to 1/100,000 sec



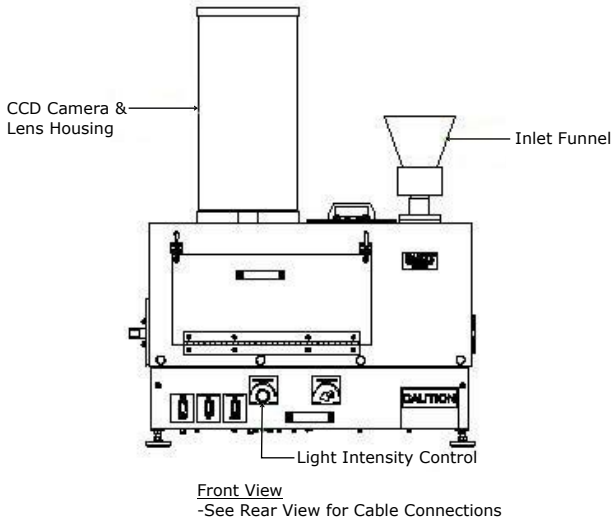
## Ordering Information

HOW TO ORDER: Select the appropriate symbols and build a part number as shown:

**EXAMPLE:**



\*Application also includes Color Speck



Canty CoreUnit™