

## PROCESS TECHNOLOGY

### PROCESS CAMERA - CENTRIFUGE



#### CLARIFIER

The CANTY Centrifuge Camera is an excellent tool for controlling a batch or continuous centrifuge to determine when the cake has been completely washed.

#### THE CANTY ADVANTAGE

The CANTY Camera / Light combination is Tri-clamp® mounted on to the existing light or sight port of the centrifuge to allow continuous internal viewing from the control room. In the control room, the Vector™ image processing computer will analyze this view and provide a 4-20mA or OPC output of fill level, filtering level, and a separate cake (solids) detection signal. The level control allows for consistent batching to the centrifuge. The cake detection 4-20mA or OPC output signal provides for immediate detection of solids, which prevent the cake from cracking. This means higher product yield due to fewer washes, and ultimately better product quality.

The CANTY Camera / Light combination is used to view and control the color line on continuous centrifuge. This avoids operator error, optimizes recovery, and minimizes washing liquid by providing a 4-20mA or OPC output signal to continually control the color line. In addition, a second reading off the CANTYVISION™ System can be used to control the surface color of the product.

Being imaged based operators can visually verify what is actually occurring with the centrifuge. Video recording is an option for later analysis.

#### FEATURES

- Centrifuge Fill Control
- Color Line Control
- Cake Detection
- Real Time Analysis
- Easy To Use For Operators
- Multiple Sizes Available
- Eliminate Errors Associated With Paddle or Laser Fill Control
- Visual Verification
- Data Can Be Stored With Images Or Video
- All Data Is Stored On Excel Or In A Database For Later Use And Easy Storage
- Settings Used For Each Sample Can Be Saved So System Setup Is Repeatable
- **SELF CLEANING UNLIKE LASERS**

#### APPLICATIONS

- Batch Centrifuge
- Continuous Centrifuge
- Replaces Existing Laser Units

#### BENEFITS

- Minimize Washing
- Eliminate Wasting Good Product
- **Liquid Color Change Does Not Effect Results**
- Record Video For Later Analysis
- Optional Save Video & Images If Needed
- LED Lighting

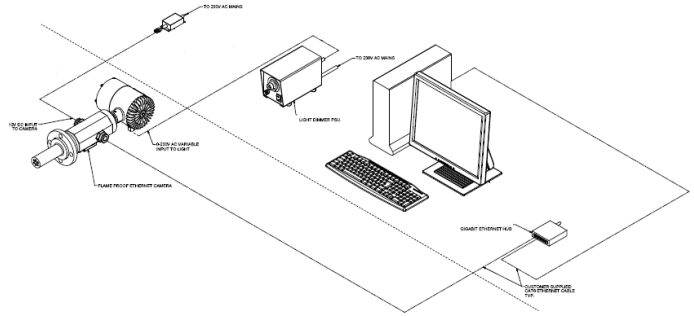
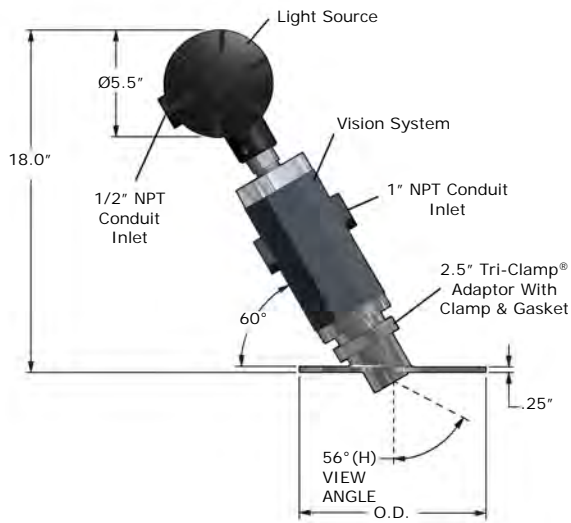
#### SPECIFICATIONS

- Power: 120 VAC / 60 Hz (230 VAC / 50 Hz)
- Ethernet Camera Resolution

#### ANALYSIS WITH CANTYVISION

- CANTYVISION™ System Can Measure And Control Your Process Parameters
- Camera Systems Use A live Video Data
- CANTYVISION™ Can Perform Level Control / Color Line / Cake Detection
- Microsoft Windows Based Operating System
- Ethernet OPC or 4-20 mA Devices

## MOUNTING CONNECTIONS



- Notes:
1. Camera and Light PSUs are not shown but must be located within 100 feet of the unit. The Camera Power Supply enclosure has the same environmental rating as the system.
  2. CautyVisionClient™ Software is included but the customer provides the PC which is not included with the system. Reference Document TA10592-1 for computer requirements.

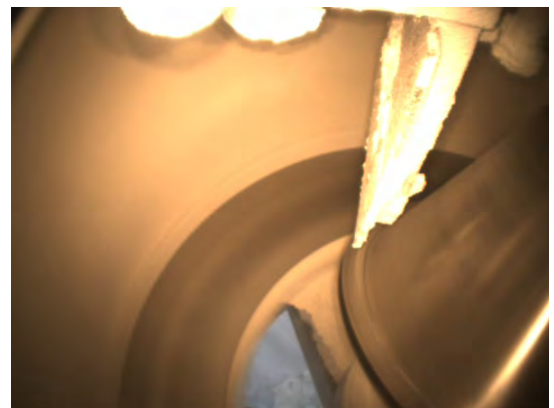
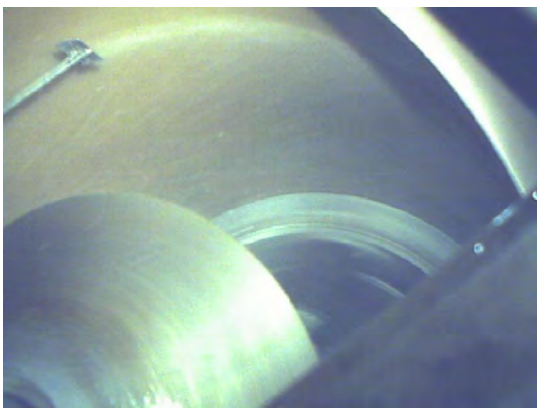
## Ordering Information

HOW TO ORDER: Select the appropriate symbols and build a part number :

### EXAMPLE:

# CBB1100-6OD

<b>WETTED MATERIAL</b> B - 316 Stainless Steel D - Hastelloy® C276		<b>INTERNAL SEAL MATERIAL</b> 6OD - Specify Outer Diameter in inches I.e. 6"
<b>CAMERA &amp; LIGHT OPTIONS</b> 1 - 1SRDO (Toroidal light with dimmer) 2 - 1SDO (Standard light with dimmer) 3 - Remote flex bundle lighting (72" TYP.)		<b>SPRAYTUBE</b> 0 - NONE 1 - SPRAY TUBE 2 - SPRAY RING
<b>ENVIRONMENTAL RATING</b> 1 - EXPLOSION PROOF (120V) 2 - FLAME PROOF (240V) 3 - NEMA 4 WEATHERPROOF (120V) 4 - IP 66 (240V)		<b>VIDEO OUTPUT</b> 0 - EIA U.S. B&W FORMAT 1 - CCIR EURO B&W FORMAT 2 - NTSC U.S. COLOR FORMAT 3 - PAL EURO COLOUR FORMAT 4 - ETHERNET



**CANTY**

Buffalo, NY USA  
Ph: (716) 625 4227

Dublin, Ireland  
Ph: + 353 (01) 882 9621

Phuket, Thailand  
Ph: + 66 (83) 968 9548

[www.jmcauty.com](http://www.jmcauty.com)

Document P/N: TA11500-1015