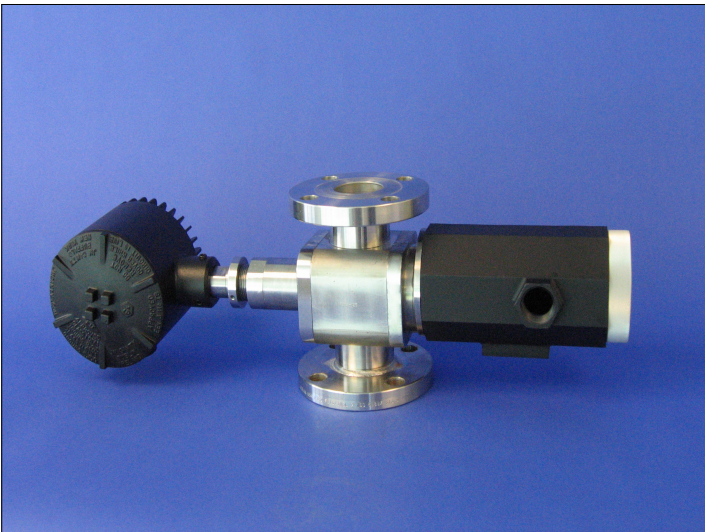


# CANTY

## PROCESS TECHNOLOGY

### INFLOW™ - DESALTER



#### DESALTER

The CANTY Inflow™ is an excellent tool for controlling a desalter to determine PPM, particle size, and count of oil droplets in the effluent stream. The crude inlet and outlet can be analyzed as well by the Inflow™.

#### THE CANTY ADVANTAGE

The CANTY Inflow™ is a vision-based camera system used with the CANTY Vector System image processor for OiW & WiO concentration and size measurement in-line: the crude inlet, crude outlet, & effluent water. The CantyVision™ Software accurately measures multiple aspects of the OiW & WiO from oil / water / solids / gas independent of each other for accurate data. In comparison to a florescence monitor, which measures only oil and is affected by solids and gas in the stream. The CantyVision™ software can identify the differences and the customer can visually verify the readings. The Inflow™ can be calibrated with the customer's current lab method to make for easy installation in the field. Determining PPM on the inlet will help optimize the desalter intake and verify what is entering the unit. Providing PPM on the outlets the desalter will benefit the effluent water side for EPA regulations as well as the crude side to increase production efficiency.

The interface can be controlled through automatic sampling, instead of having to take sample test bottles. Video recording is an option for later analysis. In-line analysis makes sure production samples are not skipped over due to lack of time!

**CANTY** Buffalo, NY USA  
Ph: (716) 625 4227

Dublin, Ireland  
Ph: + 353 (01) 882 9621

Phuket, Thailand  
Ph: + 66 (83) 968 9548

#### FEATURES

- PPM / PPB Values
- Particle Size Analysis of Oil / Water / Sand
- 15 ft/s Flow Velocity
- Real Time Analysis
- Easy To Use For Operators And Lab
- Multiple Line Size Available
- Eliminate Errors Associated With Florescence
- Reduce Analysis Wait Time For Operators
- Particle Size = .7 Microns And Greater
- Visual Verification
- Complete Skid Mount Design
- Data Can Be Stored With Images Or Video
- All Data Is Stored On Excel Or In A Database For Later Use And Easy Storage
- Settings Used For Each Sample Can Be Saved So System Setup Is Repeatable
- **NOT AFFECTED BY GAS OR SOLIDS**

#### APPLICATIONS

- Desalter Interface Testing
- Crude In
- Effluent Water
- Crude out
- Separators / Hydrocyclones / Filters
- Lab / At-Line / In-Line
- Replaces Existing Florescence Units
- EPA OiW Monitoring For Plant Discharge

#### BENEFITS

- Variable Size Available From 1/2" - 10" not just 1/8" Slip Stream That Plugs
- Reading Independent Of Gas & Solids
- Record Video For Later Analysis
- Optional Save Video & Images If Needed
- **Up to 15 ft/s Velocity Through Unit**

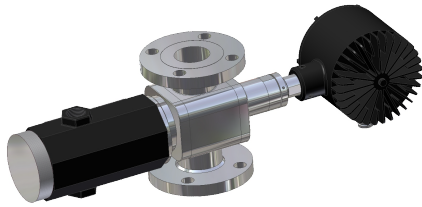
#### SPECIFICATIONS

- Power: 120 VAC / 60 Hz (230 VAC / 50 Hz)
- Ethernet Camera Resolution

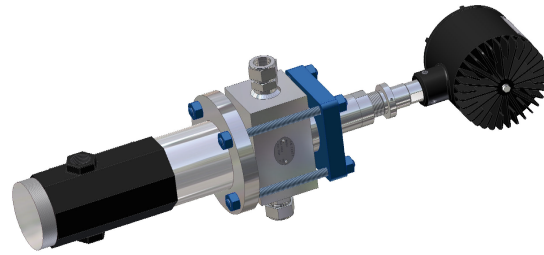
#### ANALYSIS WITH CANTYVISION

- CantyVision™ System Can Measure And Control Your Process Parameters
- Inflow™ Systems Use A live Video Data
- CantyVision™ Can Perform Concentration / Particle Size / Count Functions
- Microsoft Windows Based Operating System
- Ethernet OPC or 4-20 mA Devices

# MOUNTING CONNECTIONS



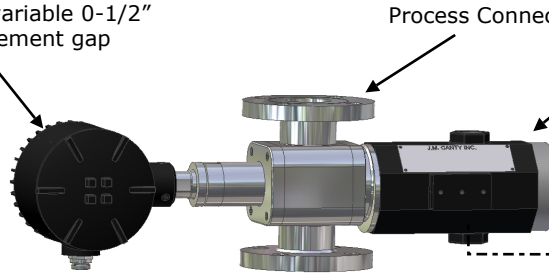
**FLANGE CONNECTION**



**SWAGelok® CONNECTION**

## TYPICAL PACKAGE

Canty LED - Provides optimal backlighting with variable 0-1/2" [12.7mm] measurement gap



Process Connection

Ethernet Vision System for product measurement

Ethernet Network Connectivity

- Notes:
1. Camera and Light PSUs are not shown but enclosure has the same environmental rating as the system.
  2. CantyVisionClient™ Software is included but the customer provides the PC which is not included with the system. Reference Document TA10592-1 for computer requirements.

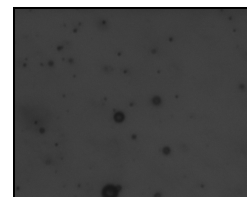
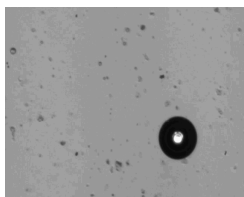
## Ordering Information

HOW TO ORDER: Select the appropriate symbols and build a part number :

### EXAMPLE:

**V O 6 C 1 1 1 A A 1 V**

<b>APPLICATION</b> O - Oil In Water M - Multiphase W - Water in Oil	<b>INTERNAL SEAL MATERIAL</b> B - BUNA                      N - NEOPRENE V - VITON®                  K - KALREZ® S - SILICONE                C - CHEMREZ® E - EPDM								
<b>CONNECTION TYPE</b> B - Swagelok® C - Flange (ANSI/DIN) E - NPT (Female)	<b>ENVIRONMENTAL RATING</b> 1 - NEMA 4 WEATHERPROOF 2 - IP 66 3 - EXPLOSION PROOF 4 - FLAME PROOF								
<b>CONNECTION SIZE</b> 0 - 1/2" (12.7mm)            4 - 4" (100mm) 1 - 1" (25mm)                6 - 6" (150mm) 5 - 1.5" (38mm)              8 - 8" (200mm) 2 - 2" (50mm)                9 - 10" (254mm) 3 - 3" (80mm)                A - 12" (305mm)	<b>ANSI OR DIN PRESSURE RATING / FLANGE PATTERN</b> <table border="1"> <thead> <tr> <th>ANSI</th> <th>DIN</th> </tr> </thead> <tbody> <tr> <td>A - 150 PSI</td> <td>D - 10 BAR</td> </tr> <tr> <td>B - 300 PSI</td> <td>E - 16 BAR</td> </tr> <tr> <td>C - 600 PSI</td> <td>F - 25 BAR</td> </tr> </tbody> </table> Consult factory for pressure rating up to 10,000 PSI.	ANSI	DIN	A - 150 PSI	D - 10 BAR	B - 300 PSI	E - 16 BAR	C - 600 PSI	F - 25 BAR
ANSI	DIN								
A - 150 PSI	D - 10 BAR								
B - 300 PSI	E - 16 BAR								
C - 600 PSI	F - 25 BAR								
<b>WETTED METAL MATERIAL</b> 1 - 316L Stainless Steel 2 - Hastelloy® C276 or equal 3 - Hastelloy® C-22® or equal 4 - Carbon Steel	<b>INPUT POWER</b> A - 120 V AC / 60Hz / 250W B - 230 V AC / 50Hz / 250W								
<b>NON-WETTED METAL MATERIAL(PRESSURE BEARING)</b> 0 - Carbon Steel 1 - 300 Series Stainless Steel									



**CANTY** Buffalo, NY USA  
Ph: (716) 625 4227

Dublin, Ireland  
Ph: + 353 (01) 882 9621

Phuket, Thailand  
Ph: + 66 (83) 968 9548

[www.jmcanty.com](http://www.jmcanty.com)

Document P/N: TA11500-1026