

CANTY

PROCESS TECHNOLOGY

DIGESTERCAM™



HOW IT WORKS

J.M. Canty cameras are patented systems designed to illuminate and view inside digester tanks through a single connection. There is no need for multiple vessel ports. Canty supplies an integrally mounted camera and lighting system that allows for the digester to remain hermetically sealed, even when performing maintenance on the camera system. Canty fused glass isolates the digester from the camera system, making it ideal for biogas production. The Ethernet video output can be displayed on a computer in the comforts of a control room, or recorded on any DVR or hard drive. Various software capabilities are available to allow for control and alarm options.

CANTY LIGHTS MAKE IT POSSIBLE

The key to Canty Camera/Light combination systems is the Canty light. Canty uses fiber optic light guides to focus cool, effective light into a process vessel or area. Cool light eliminates product bake-over on the viewing window. Fiber optic light guides have been specifically designed to work in conjunction with cool light to maximize the light transmission into the vessel. The resulting live, remote video image from this illumination is unparalleled!

FEATURES

- FM, CSA and ATEX approvals on various models. World wide approvals!
- High resolution CCD cameras – available in B&W and color, NTSC, PAL and Ethernet output.
- Remotely view your process from the comforts of a control room
- Single nozzle viewing/illuminating (with light)
- Remote light dimming options
- Spray rings are available to keep your window clean

APPLICATIONS

- Digester - Surveillance & Inspection
- Remote Access Without Technician Needing to Climb Vessel
- Foam Detection & Alarm
- Vent Monitoring
- Vent Overflow Alarm

SPECIFICATIONS

CCD Sensor:	1/2" format. 811(H) x 508(V) typ.
Sensitivity:	Available from .0001 lux usable picture (low light B&W). 0.1 lux is typical (color). Varies with model.
Video Output:	1.0 V p-p, 75Ω typ.(analog) or Ethernet options.
Ambient Temp:	-30°C to 50°C (Consult factory additional temperature needs)
Current Req.:	500 mA typical
Cable:	Cat6 Ethernet (Ethernet Models), RG 59/U 75Ω coaxial cable Suitable CCTV applications analog)
Environmental ratings:	NEMA 4, IP66, Explosion proof (Class 1, Div. 1, Groups B, C & D, Class II, Div. 1, Groups E, F & G) or Flameproof EEx d IIC T6



SPRAY RING

Canty offers an optional spray ring for cleaning purposes. The spray ring generates a high pressure vortex rinsing action to remove tough deposits, allowing the camera view to remain unobstructed in even the dirtiest environments.

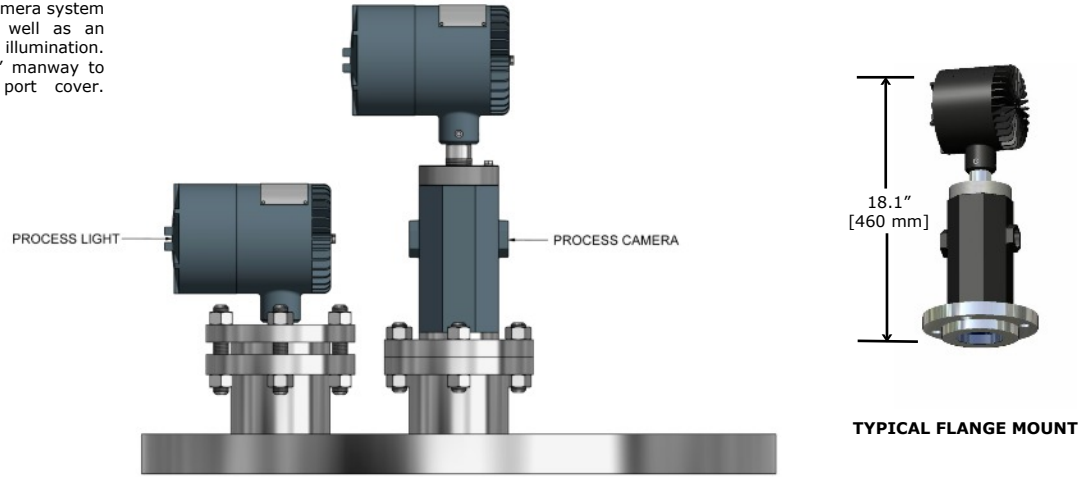
CANTY

Buffalo, NY USA
Ph: (716) 625 4227

Dublin, Ireland
Ph: + 353 (01) 882 9621

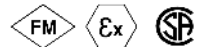
Phuket, Thailand
Ph: + 66 (83) 968 9548

Model shown includes a Canty camera system with integral light source, as well as an additional light for increased illumination. Equipment is mounted to a 36" manway to replace the existing access port cover.



Ordering Information

HOW TO ORDER: Select the appropriate symbols and build a part number as shown:



EXAMPLE:

V 7 E 2 1 B D 1 J

VISION SYSTEM

V - North American standard
VE - European standard

ENVIRONMENTAL RATINGS

7 - Explosion proof (US) or Flame proof (Europe)

CAMERA OPTIONS

E - Ethernet Video color camera
(Note: Please contact CANTY for analog video options)

LENS OPTIONS

(Note: Some lenses are not available with certain mounting connections. Consult Canty for details)

2 - 56° (H) x 43° (V) x 69° (D)
3 - 69° (H) x 53° (V) x 80° (D)

LIGHT OPTIONS

G - HYL 80 1SRDO (240 V)
J - HYL 80 1SRDO (120 V)

NON WETTED MATERIAL

2 - 150 # 316L stainless steel ANSI flange

MOUNTING CONNECTION

Consult factory for additional sizes and ratings.
C - 3" ANSI flange
D - 4" ANSI flange

WETTED MATERIAL OPTION

B - 316 L Stainless Steel*

CAMERA POWER SUPPLY OPTIONS

1 - User supplies 120 V AC. Power supply in a non WP or EXP enclosure. User provides enclosure and switch as needed.
8 - User supplies 120 V AC. Power supply in a non WP or EXP enclosure. User provides enclosure and switch as needed.
2 - No power supply required.

Optional Jet Spray Ring:

SR

MODEL:

1 = Open Channel

PRESSURE:

A = 150 psi

MATERIAL:

1 = 316L Stainless Steel

INSERTION LENGTH:

A = NONE (open & enclosed models)

SIZE:

C = 3"

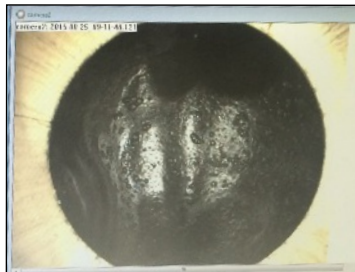
D = 4"



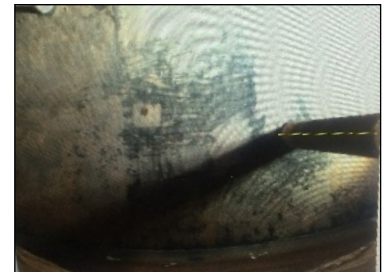
Optional Jet Spray Ring



Optional Additional Lighting Available



Full Digester



Empty Digester

*Canty reserves the right to upgrade to Hastelloy® C family of alloys or equal at their own cost

** Not available with all models

CANTY

Buffalo, NY USA
Ph: (716) 625 4227

Dublin, Ireland
Ph: + 353 (01) 882 9621

Phuket, Thailand
Ph: + 66 (83) 968 9548