

**PROCESS AREA**

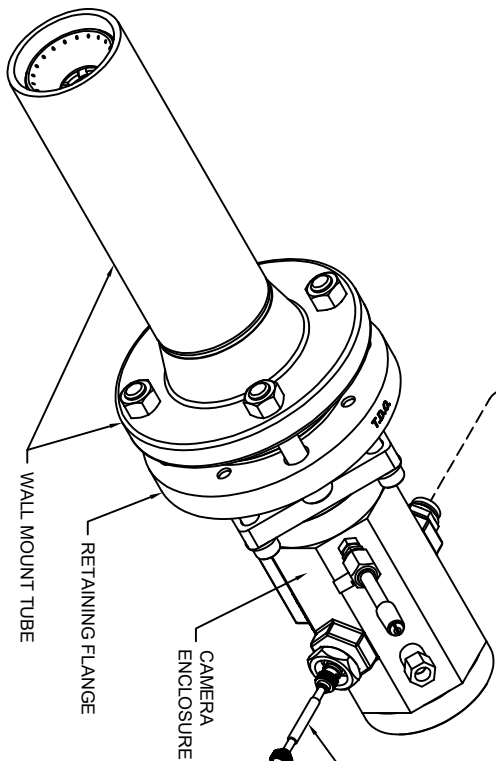
TO 120V AC, 60 Hz  
SOURCE

DC VOLTAGE POWER FEED  
FOR CAMERA ELECTRONICS

NEMA TYPE 4 OR IP 66  
POWER SUPPLY

RG-59/U COAXIAL CABLE INCLUDED  
- 12 in. [30.4 cm] CABLE LENGTH  
WITH MALE BNC TERMINATION

INCLUDED QUICK CONNECT CABLE TO  
MATING CONNECTOR ON CAMERA HOUSING  
- 19 ft. [6m] CABLE LENGTH

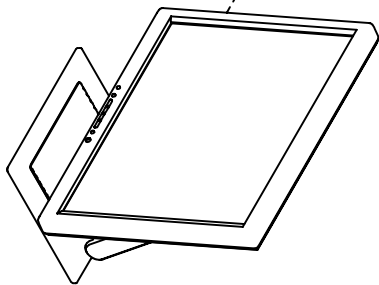


HIGH TEMP. INSERTION VISION SYSTEM

CUSTOMER SUPPLIED COAXIAL CABLE. SEE NOTE 2  
- 250 ft [76 m] MAX. DISTANCE FOR COLOR CAMERAS  
- 750 ft [229 m] MAX. DISTANCE FOR B&W CAMERAS

**SAFE AREA**

CUSTOMER SUPPLIED VIDEO MONITOR  
SEE NOTE 3



- NOTES:**
1. ALL WIRING AND CONNECTORS ARE SUPPLIED BY CUSTOMER AND MUST BE COMPLETED IN ACCORDANCE WITH APPLICABLE REGULATIONS.
  2. CUSTOMER MUST SUPPLY RG-59/U, RG-11/U OR RG-6/U, 75Ω COAXIAL CABLE SUITABLE FOR CCTV APPLICATIONS. DO NOT SUBSTITUTE CATV OR MATV CABLE. WHERE NOTED, CUSTOMER TO SPECIFY CABLE AND TERMINATIONS TO MEET PROJECT REQUIREMENTS AND CABLE DISTANCE RUNS.
  3. VIDEO MONITOR SHALL ACCEPT A NTSC, PAL, EIA OR CCIR ANALOG CAMERA INPUT, DEPENDING UPON CAMERA ORDERED. MONITOR MUST INCLUDE A COMPOSITE VIDEO INPUT CONNECTION AND 75Ω / HIGH INPUT IMPEDANCE (SWITCHABLE).
  4. THIS DOCUMENT IS INCLUDED WITH THE HIGH TEMPERATURE VISION SYSTEM, INSERTION INSTALLATION AND OPERATION MANUALS TA6205-1 AND TA8823-1.
  5. SEE DOCUMENT TA6205-150 FOR PIPING DETAILS.
  6. ALL INFORMATION SUBJECT TO CHANGE WITHOUT NOTICE.

**NOTICE**

THIS DRAWING IS THE PROPERTY OF J.M. CANTY AND MUST BE RETURNED WITHOUT REPRODUCTION OR REPLICATION AT ANY TIME UPON REQUEST. IT HAS SERVED THE PURPOSE FOR WHICH IT WAS FURNISHED WHILE IN THE POSSESSION OF THE RECIPIENT. IT IS NOT TO BE REPRODUCED OR AGAINST DISCLOSURE TO ANYONE EXCEPT THOSE EMPLOYEES WHO REQUIRE IT FOR WORK OR JOB. THE RECIPIENT MUST SIGN AND RETURN HEREIN EMPLOYEES TO KEEP CONFIDENTIAL THE INFORMATION CONTAINED HERE ON.

**IMPORTANT**  
FOR THE REQUIRED  
MANUFACTURING  
SPECIFICATIONS SEE  
DOCUMENT #A4956

NOTE: FAILURE TO  
RECEIVE DOCUMENT  
DOES NOT WAIVE  
VENDOR  
RESPONSIBILITY

DRAWN BY	DATE
GKW	11-Dec-19
APPROVAL	DATE
MFR	09-Jan-20
ENGINEERING ANALYSIS	DATE
CURRENT	DATE
MFG. APPROVAL	DATE
QUALITY CONTROL	DATE
V/S	

J.M. CANTY INC. 6100 DONNER RD. BUFFALO, N.Y. 14094 U.S.A.		<b>CANTY</b> WWW.JMCANTY.COM		J.M. CANTY INTL. LTD. BALYCOOLIN BUS. PK BLANCHARDSTOWN DUBLIN 15, IRELAND
TITLE TYPICAL ANALOG ULTRA TEMP HIGH TEMP. INSERTION VISION SYSTEM / COMPONENT LAYOUT				
SCALE	C	FILE NAME	TA11950-1033	
NTS	0			SHEET 1 OF 1