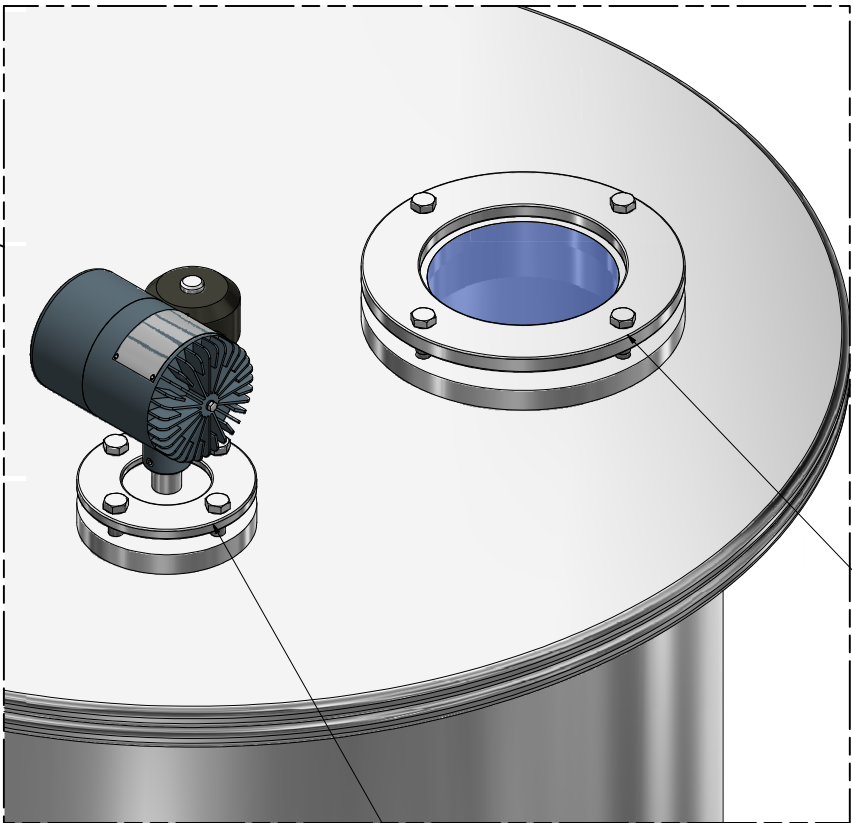


CENTRIFUGE VIEW  
SCALE .125 : 1

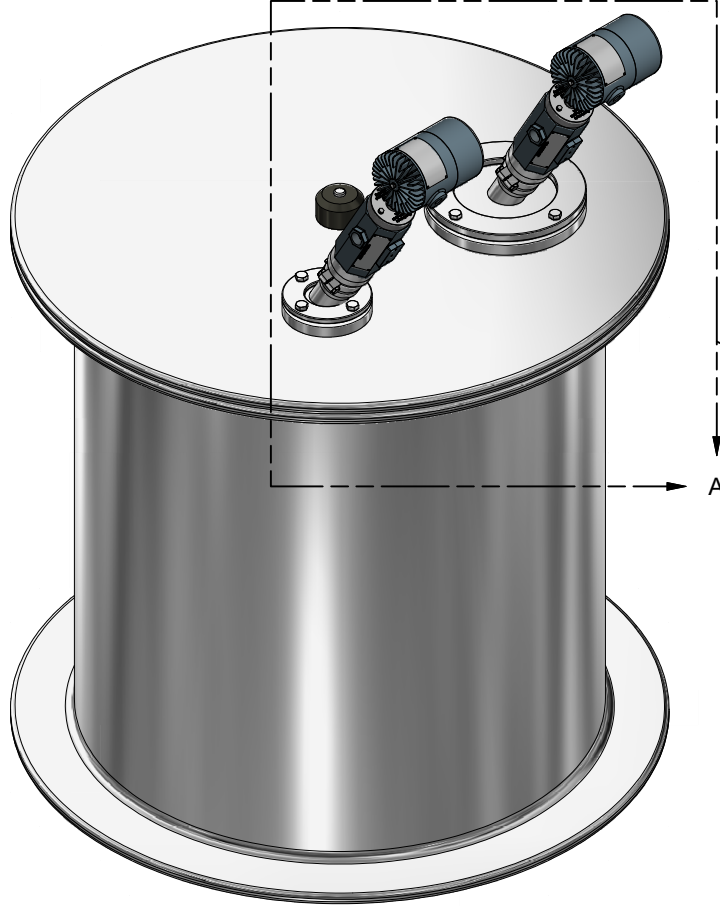


DETAIL A  
SCALE .25 : 1

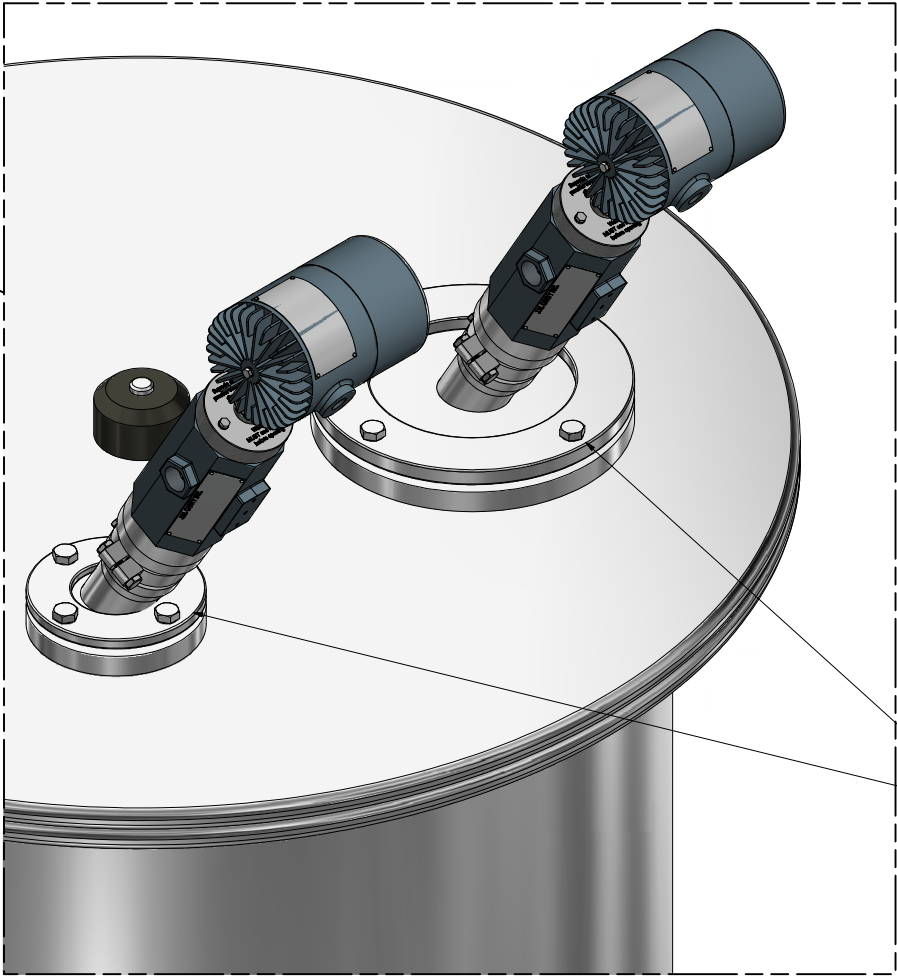
TYPICAL SIGHTGLASS CONNECTION  
ON CENTRIFUGE LID

TYPICAL LIGHTING CONNECTION  
ON CENTRIFUGE LID

<div>NOTICE</div> <div>THIS DRAWING IS THE PROPERTY OF J.M. CANTY AND MUST BE RETURNED WITHOUT REPRODUCTION OR DUPLICATION, AT ANY TIME UPON REQUEST, BUT IN ANY EVENT AS SOON AS IT HAS SERVED THE PURPOSE FOR WHICH IT WAS FURNISHED. WHILE IN THE POSSESSION OF THE RECIPIENT, IT MUST BE PROPERLY SAFEGUARDED AGAINST DISCLOSURE TO ANYONE EXCEPT THOSE EMPLOYEES WHO REQUIRE IT FOR WORK OR JOB. THE RECIPIENT MUST KEEP CONFIDENTIAL AND REQUIRE HIS (HER) EMPLOYEES TO KEEP CONFIDENTIAL THE INFORMATION CONTAINED HERE ON.</div>	<div>IMPORTANT</div> <div>FOR THE REQUIRED MANUFACTURING SPECIFICATIONS SEE DOCUMENT #A4955</div> <div>NOTE: FAILURE TO RECEIVE DOCUMENT DOES NOT WAIVE VENDOR RESPONSIBILITY</div>	<div>DRAWN BY</div> <div>DEJ</div>	<div>DATE</div> <div>05-May-22</div>	<div>J.M. CANTY INC. 6100 DONNER RD. BUFFALO, N.Y. 14094 U.S.A.</div>	<div>CANTY</div> <div>WWW.JMCANTY.COM</div>	<div>J.M. CANTY INTL. LTD. BALLYCOOLIN BUS. PK. BLANCHARDSTOWN DUBLIN 15, IRELAND</div>	
		<div>APPROVAL</div> <div>DEJ</div>	<div>DATE</div> <div>11-May-22</div>				
		<div>ENGINEERING ANALYSIS</div> <div>CURRENT</div>	<div>DATE</div>	<div>TITLE</div> <div>CENTRIFUGE CAMERA TYP. MOUNTING INSTRUCTIONS / DESCRIPTION</div>			
		<div>MFG. APPROVAL</div> <div>PENDING</div>	<div>DATE</div>	<div>REVISION</div> <div>0</div>	<div>FILE NAME</div> <div>TA11950-1077</div>		
		<div>QUALITY CONTROL</div> <div>V.J.S.</div>	<div>DATE</div>	<div>SCALE</div> <div>AS NOTED</div>	<div>SIZE</div> <div>D</div>		<div>SHEET</div> <div>1</div>



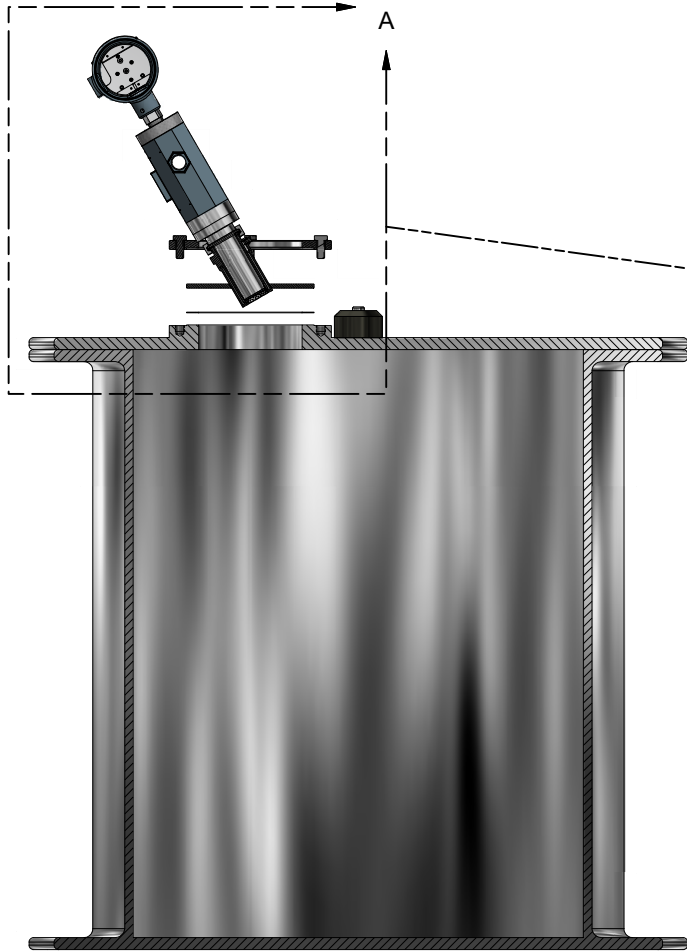
CENTRIFUGE VIEW  
SCALE .125 : 1



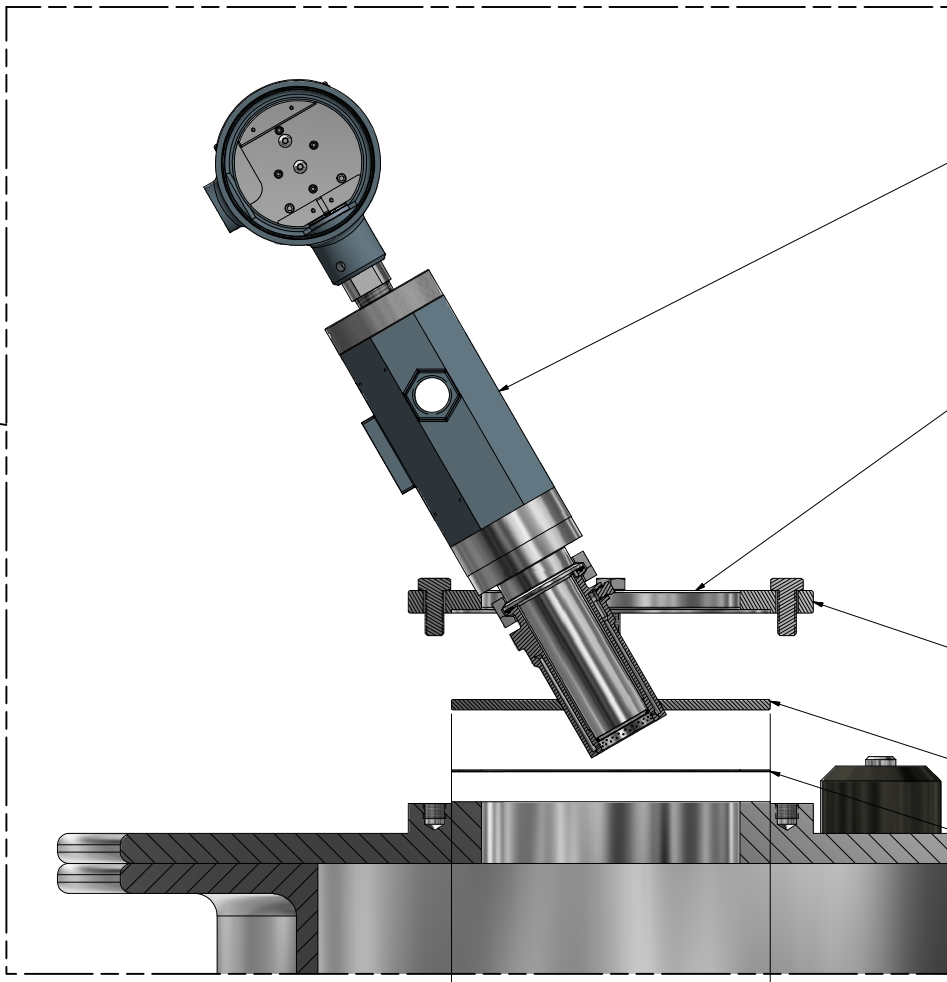
DETAIL A  
SCALE .25 : 1

CANTY CENTRIFUGE CAMERAS AND THEIR MTG. CONNECTION CAN BE SIZED TO FIT EITHER THE LIGHTING CONNECTION OR THE SIGHTGLASS CONNECTION ON A CENTRIFUGE LID **MIN. O.D. FOR MTG. CXN. IS Ø4.875"**.

<div>NOTICE</div> <div>THIS DRAWING IS THE PROPERTY OF J.M. CANTY AND MUST BE RETURNED WITHOUT REPRODUCTION OR DUPLICATION, AT ANY TIME UPON REQUEST, BUT IN ANY EVENT AS SOON AS IT HAS SERVED THE PURPOSE FOR WHICH IT WAS FURNISHED. WHILE IN THE POSSESSION OF THE RECIPIENT, IT MUST BE PROPERLY SAFEGUARDED AGAINST DISCLOSURE TO ANYONE EXCEPT THOSE EMPLOYEES WHO REQUIRE IT FOR WORK OR JOB. THE RECIPIENT MUST KEEP CONFIDENTIAL AND REQUIRE HIS (HER) EMPLOYEES TO KEEP CONFIDENTIAL THE INFORMATION CONTAINED HERE ON.</div>	<div>IMPORTANT</div> <div>FOR THE REQUIRED MANUFACTURING SPECIFICATIONS SEE DOCUMENT #A4955</div>	<div>DRAWN BY</div> <div>DEJ</div> <div>APPROVAL</div> <div>DEJ</div> <div>ENGINEERING ANALYSIS</div> <div>CURRENT</div> <div>MFG. APPROVAL</div> <div>PENDING</div> <div>QUALITY CONTROL</div> <div>V.J.S.</div>	<div>DATE</div> <div>05-May-22</div> <div>DATE</div> <div>11-May-22</div> <div>DATE</div> <div></div> <div>DATE</div> <div></div> <div>DATE</div> <div></div>	<div>J.M. CANTY INC. 6100 DONNER RD. BUFFALO, N.Y. 14094 U.S.A.</div>	<div>CANTY</div> <div>WWW.JMCANTY.COM</div>	<div>J.M. CANTY INTL. LTD. BALLYCOOLIN BUS. PK. BLANCHARDSTOWN DUBLIN 15, IRELAND</div>	
	<div>NOTE: FAILURE TO RECEIVE DOCUMENT DOES NOT WAIVE VENDOR RESPONSIBILITY</div>			<div>TITLE</div> <div>CENTRIFUGE CAMERA TYP. MOUNTING INSTRUCTIONS / DESCRIPTION</div>			
				<div>REVISION</div> <div>0</div>	<div>FILE NAME</div> <div>TA11950-1077</div>		
				<div>SCALE</div> <div>AS NOTED</div>	<div>SIZE</div> <div>D</div>	<div>SHEET</div> <div>2</div>	<div>OF</div> <div>3</div>



SECTION A-A  
SCALE .125 : 1



DETAIL A  
SCALE .3125 : 1  
(EXPLODED MTG. VIEW)

CANTY CENTRIFUGE CAMERA SYSTEM

WHEN RETAINER IS LOOSE CAMERA CAN ROTATE  
TO BE AIMED AT DESIRED VIEWING TARGET

RETAINER / MTG. HARDWARE

CENTRIFUGE CAMERA MTG. SPRAY RING / MTG. PLATE.  
SIZE TO SAME O.D. AS EXISTING SIGHTGLASS / LIGHT

PROCESS GASKET

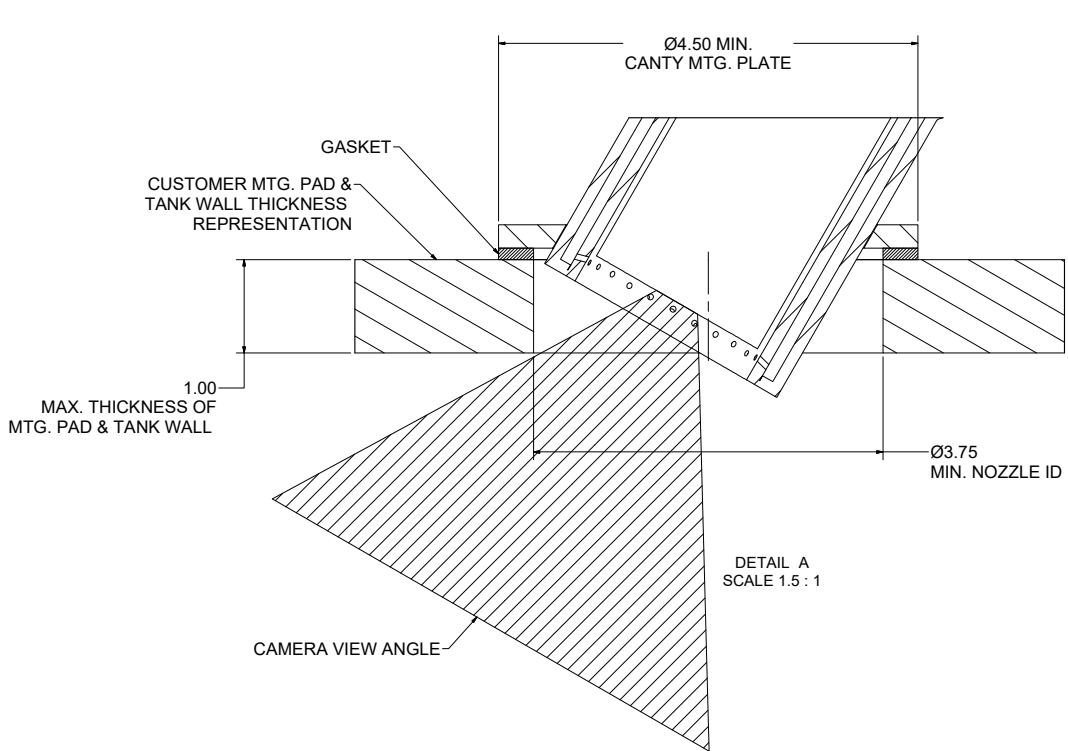
(SPRAY RING / MTG. PLATE Ø)  
SIZE THIS TO MATCH EXISTING  
SIGHTGLASS / LIGHT O.D.

NOTICE  
THIS DRAWING IS THE PROPERTY OF  
J.M. CANTY AND MUST BE RETURNED  
WITHOUT REPRODUCTION OR  
DUPLICATION, AT ANY TIME UPON  
REQUEST, BUT IN ANY EVENT AS  
SOON AS IT HAS SERVED THE  
PURPOSE FOR WHICH IT WAS  
FURNISHED. WHILE IN THE  
POSSESSION OF THE RECIPIENT, IT  
MUST BE PROPERLY SAFEGUARDED  
AGAINST DISCLOSURE TO ANYONE  
EXCEPT THOSE EMPLOYEES WHO  
REQUIRE IT FOR WORK OR JOB. THE  
RECIPIENT MUST KEEP  
CONFIDENTIAL AND REQUIRE HIS  
(HER) EMPLOYEES TO KEEP  
CONFIDENTIAL THE INFORMATION  
CONTAINED HERE ON.

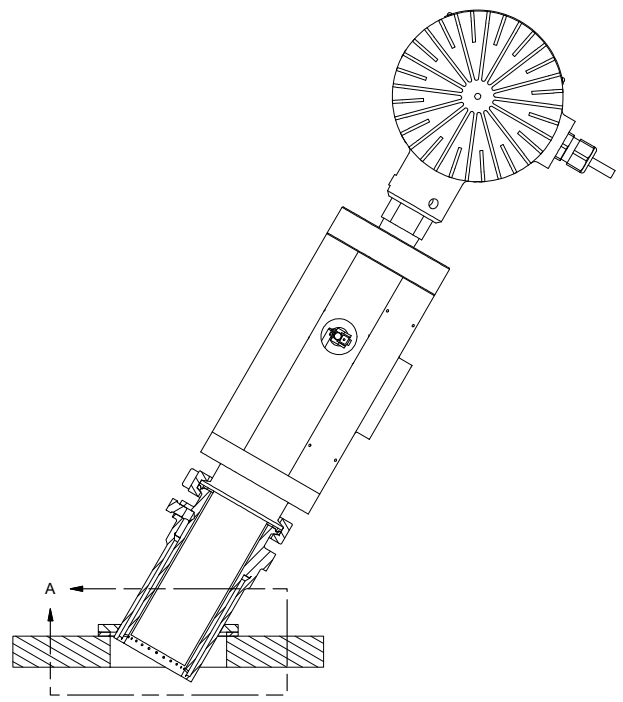
IMPORTANT  
FOR THE REQUIRED  
MANUFACTURING  
SPECIFICATIONS SEE  
DOCUMENT #A4955  
  
NOTE: FAILURE TO  
RECEIVE DOCUMENT  
DOES NOT WAIVE  
VENDOR  
RESPONSIBILITY

DRAWN BY DEJ	DATE 05-May-22
APPROVAL DEJ	DATE 11-May-22
ENGINEERING ANALYSIS CURRENT	DATE
MFG. APPROVAL PENDING	DATE
QUALITY CONTROL V.J.S.	DATE

J.M. CANTY INC. 6100 DONNER RD. BUFFALO, N.Y. 14094 U.S.A.		<b>CANTY</b>  WWW.JMCANTY.COM		J.M. CANTY INTL. LTD. BALLYCOOLIN BUS. PK. BLANCHARDSTOWN DUBLIN 15, IRELAND	
TITLE					
CENTRIFUGE CAMERA TYP. MOUNTING INSTRUCTIONS / DESCRIPTION					
REVISION		FILE NAME			
0		TA11950-1077			
SCALE AS NOTED		SIZE D		SHEET 3 OF 3	



DETAIL A  
SCALE 1.5 : 1



<b>NOTICE</b> THIS DRAWING IS THE PROPERTY OF J.M. CANTY AND MUST BE RETURNED WITHOUT REPRODUCTION OR REPLICATION AT ANY TIME UPON REQUEST, BUT IN ANY EVENT AS SOON AS IT HAS SERVED THE PURPOSE FOR WHICH IT WAS FURNISHED, WHILE IN THE POSSESSION OF THE RECIPIENT, IT MUST BE PROPERLY SAFEGUARDED AGAINST DISCLOSURE TO ANYONE EXCEPT THOSE EMPLOYEES WHO REQUIRE IT FOR WORK OR JOB. THE RECIPIENT MUST KEEP CONFIDENTIAL AND REQUIRE HIS (HER) EMPLOYEES TO KEEP CONFIDENTIAL THE INFORMATION CONTAINED HERE ON.		<b>IMPORTANT FOR THE REQUIRED MANUFACTURING SPECIFICATIONS SEE DOCUMENT #A4955</b>  NOTE: FAILURE TO RECEIVE DOCUMENT DOES NOT WAIVE VENDOR RESPONSIBILITY		DRAWN BY DEJ	DATE 06-Apr-20	J.M. CANTY INC. 6100 DONNER RD. BUFFALO, N.Y. 14204 U.S.A.	<b>CANTY</b>  WWW.JMCANTY.COM	J.M. CANTY INTL. LTD. BALLYCOOLIN BUS. PK. BLANCHARDSTOWN DUBLIN 15, IRELAND
APPROVAL DEJ		DATE 06-Apr-20		ENGINEERING ANALYSIS CURRENT	DATE			
MFG. APPROVAL PENDING		DATE		CENTRIFUGE CAMERA MIN. / MAX. NOZZLE DIMENSIONS				
QUALITY CONTROL VJS		DATE		REVISION 0	FILE NAME VD11950-1049			
				SCALE AS NOTED	SIZE D	SHEET 1 OF 1		