

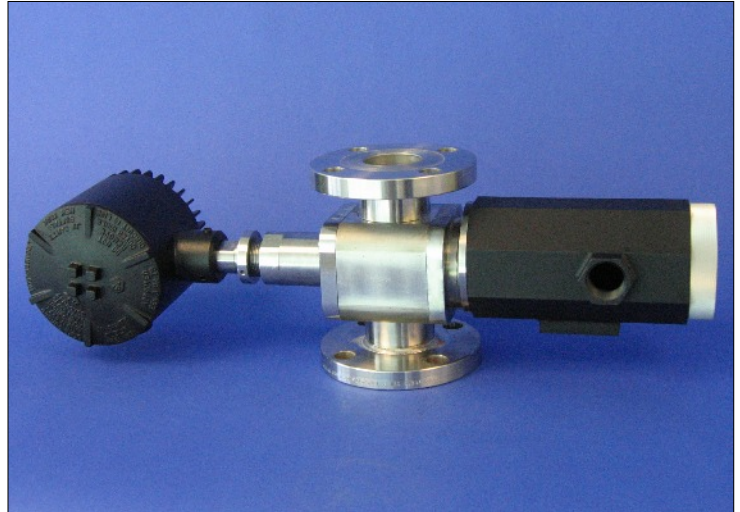
# CANTY

## PROCESS TECHNOLOGY

## INFLOW™ TURBIDITY / COLOR ANALYSIS / PERCENT SOLIDS MEASUREMENT SYSTEMS

Combining the latest in CCD Ethernet camera technology with Canty fused glass, lighting and CANTYVISIONCLIENT™ software, the INFLOW™ Measurement System provides real time In Flow measurement of Turbidity, Color Analysis or Percent Solids, determined by the part number selected.

No sampling or lab analysis is required! Each unit can be fully integrated into existing TCP/IP networks. CANTYVISIONCLIENT™ software is installed on a user-supplied PC, and connected to the INFLOW™ measurement system via an Ethernet network. Images of the process can be viewed from any networked PC. The live images are remotely analyzed by CANTYVISIONCLIENT™ software. A comprehensive library of standard utilities and data functions provide a multitude of *real-time* process information.



The CANTY INFLOW™ Turbidity, Color Measurement or Percent Solids Measurement System uses a 0-1/2" variable insertion measurement gap. This insertion is made possible by the Fuseview™ sight glass, which allows the optical fused pieces to be located in the center of the fluid stream, which is unique to the Canty system. The fused glass seal contains no gaskets, ledges, or steps allowing the highest velocity, representative sample and keeps the sensor clean, even in the harshest of environments (polymer, crude oil, drilling mud, epoxy, etc.). The fused glass seal location keeps the sensor in line with the process temperature to avoid product build up due to thermal change. The image processor can be configured with multiple zone sensing on the image of the fluid. The results from the zones can be compared to base line values for reliability and alarm on detection of a problem.

### FEATURES

- Ethernet Connectivity
- Real Time Monitoring Of Process In Flow
- Solid One Piece Central Hub
- Supplied With Internal O-ring Seals
- Easily Installed Modular Unit
- Fused Glass Process Barriers
- Regulated Light Source Emits Cold Light To Prevent Product Bake-On
- OPC, 4-20mA Current Loop, EXCEL spreadsheet and Relay Outputs Are Available

### ADVANTAGES

- Provides Both A Real Time, In Flow Measurement And A Continuous Real Time View Of The Product
- Various Process Connection Sizes Available (Flanged, Tri-Clamp®, compressing fitting, Tube or NPT)
- Fully Cleanable Unit
- High Throughput
- Available In NEMA4, IP66, Explosion Proof or Flame Proof Packages
- Digital Video Storage to Customer PC / DVD or Network Drive

### COMMON APPLICATIONS

- Oil in Water
- Turbidity
- Color/Opacity
- Waste Water
- Centrifuge Discharge
- Percent Solids
- Membrane Filtration
- Water In Oil
- Many, many more.

**CANTY**

Buffalo, NY USA  
Ph: (716) 625 4227

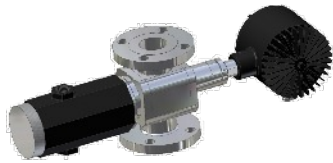
Dublin, Ireland  
Ph: + 353 (01) 882 9621

Phuket, Thailand  
Ph: + 66 (83) 968 9548

[www.jmcanty.com](http://www.jmcanty.com)

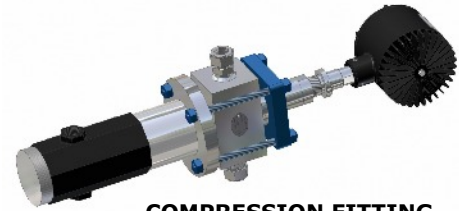
Document P/N: TA10591-1 Rev. 5

# MOUNTING CONNECTIONS



**FLANGE CONNECTION**

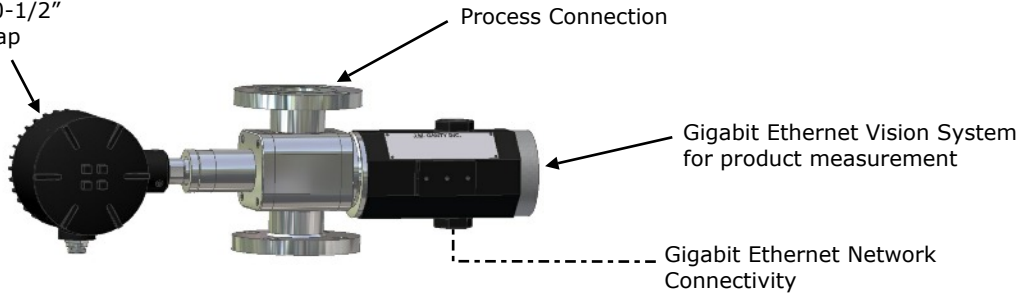
## TRI-CLAMP® CONNECTION



**COMPRESSION FITTING CONNECTION**

Canty Light - Provides optimal backlighting with variable 0-1/2" [12.7mm] measurement gap

## TYPICAL PACKAGE



- Notes:
1. Camera and Light PSUs are not shown but must be located within 100 feet of the unit. The Camera Power Supply enclosure has the same environmental rating as the system.
  2. CantyVisionClient™ Software is included but the customer provides the PC which is not included with the system. Reference Document TA10592-1 for computer requirements.

## Ordering Information

HOW TO ORDER: Select the appropriate symbols and build a part number:

### EXAMPLE:

**V P 1 C 1 1 1 A A 1 V**

APPLICATION	
T -	Turbidity
C -	Color Analysis
P -	Percent Solids

CONNECTION TYPE	
A -	Tri Clamp®
B -	Compression Fitting
C -	Flange (ANSI/DIN)
D -	Tube Diameter
E -	NPT (Female)

CONNECTION SIZE			
0 -	1/2" (12.7mm)	3 -	3" (80mm)
7 -	3/4" (19mm)	4 -	4" (100mm)
1 -	1" (25mm)	6 -	6" (150mm)
5 -	1.5" (38mm)	8 -	8" (200mm)
2 -	2" (50mm)		

WETTED METAL MATERIAL	
1 -	316L Stainless Steel
2 -	Hastelloy® C276 or equal
3 -	Hastelloy® C-22® or equal

INTERNAL SEAL MATERIAL			
B -	BUNA	N -	NEOPRENE
V -	VITON®	K -	KALREZ®
S -	SILICONE	C -	CHEMREZ®
E -	EPDM		

ENVIRONMENTAL RATING	
1 -	NEMA 4 WEATHERPROOF
2 -	IP 66
3 -	EXPLOSION PROOF
4 -	FLAME PROOF

ANSI OR DIN PRESSURE RATING / FLANGE PATTERN			
<b>ANSI</b>	<b>DIN</b>		
A -	150 PSI	D -	10 BAR
B -	300 PSI	E -	16 BAR
C -	600 PSI	F -	25 BAR

INPUT POWER	
A -	120 V AC / 60Hz / 250W
B -	230 V AC / 50Hz / 250W
2 -	24 V DC

NON-WETTED METAL MATERIAL(PRESSURE BEARING)	
0 -	Carbon Steel
1 -	300 Series Stainless Steel

All registered trademarks are the property of their respective owners.

**CANTY**

Buffalo, NY USA  
Ph: (716) 625 4227

Dublin, Ireland  
Ph: + 353 (01) 882 9621

Phuket, Thailand  
Ph: + 66 (83) 968 9548