

CANTY

PROCESS TECHNOLOGY

BIOCAM™ SANITARY PROCESS CAMERA

Stainless Steel NEMA 4X Construction



FEATURES

- Built in LED light source - maintenance free
- Compact all-in-one design
- Sanitary 316L S.S. Housing
- No external power supplies required
- Available in 24V DC, 120V AC, 230V AC
- Strobed light allows for optimized illumination without interfering with photosensitive processes
- Built in heater to prevent fog and condensation
- One-piece streamlined design
- System outputs via OPC or 4-20mA to a DCS or PLC for complete, closed-loop control
- Ideal system for foam detection - Canty Vector Control Module can output and control the addition of anti-foam
- Single use models also available

HOW IT WORKS

The CANTY BioCam™ is a process camera engineered and designed for sanitary applications. The BioCam™ combines the latest in LED lighting with Ethernet camera technology in a streamlined package. The camera utilizes built-in strobe LED light that has been optimized to run efficiently as to not obstruct photosensitive processes. The all-in-one design is both compact and sanitary and unlike its predecessors requires no additional external power supply for operation. A built in heater eliminates condensation from forming on the glass and provides for a clear image at all times. Coupled with the Canty Vector Control Module, the BioCam™ can be used for full control via OPC or 4-20mA.

SPECIFICATIONS

Power Req: 24V DC
Housings: NEMA 4X Sanitary, IP 66, 316L S.S. construction
Wetted Materials: Alloy C-276
Surface Finishes: 20uin Ra standard. Also available in 15uin Ra with electropolishing as an option.
Connection: 4" Tri-Clamp® / 4" NA-Connect®
Cabling Supplied: 8-Conductor 33 ft. [10 m] 24 AWG stranded/tinned quick connect Ethernet cord, 4-Conductor 19 ft. [6 m] 16 AWG stranded quick connect power cord.

FOAM DETECTION

The CANTY BioCam™ is uniquely qualified to view inside your fermentors and bioreactors and provides a continual control signal allowing the user to meter in antifoam. The BioCam™ is an Ethernet based imaging system which connects to the CANTY VCM™ image processor that determines the percentage of foam on the surface of the liquid. The foam control function allows for significant savings of antifoam, improves process performance in cell culture growth and eliminates the need for additional antifoam fluids in purification.

APPLICATIONS

- BioTech Reactors, Fermentors and Sterilizers
- Sterile Process Vessels
- Aseptic Tanks
- Sanitary Areas and Glove Boxes
- Portable Tanks
- Freeze Dryers
- Many, many more

SANITARY DESIGN

All models feature 316L S.S. construction and are NEMA 4x Weatherproof rated. No external power supplies required. The BioCam™ features an integral strobe LED light source and high speed Ethernet camera mounted in a compact chassis.

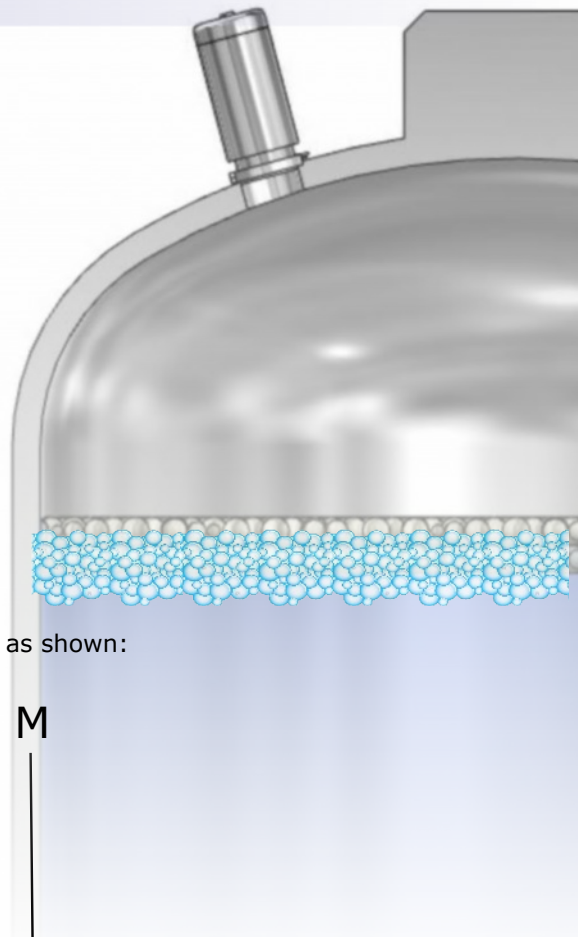
CANTY

JM Canty Inc
JM Canty Intl Ltd
JM Canty Asia
Buffalo, NY USA
Dublin, Ireland
Phuket, Thailand

Ph: (716) 625 4227
Ph: + 353 (01) 882 9621
Ph: + 66 83 9689548

Fax: (716) 625 4228
Fax: +353 (01) 882 9622

ORDERING INFORMATION



HOW TO ORDER: Select the appropriate symbols and build a part number as shown:

Ordering Information

EXAMPLE:

VBC- 5 E 3 2 _ G B M

ENVIRONMENTAL RATING

5 - NEMA 4x Weatherproof, IP66

CAMERA OPTION

E - Ethernet Video Color Camera

LENS OPTION

3 - 69° (H) x 61° (V) x 85° (D)*
6 - 41° (H) x 31° (V) x 50° (D)

POWER OPTION

2 - User supplies 24V DC.
Consult factory for other voltage options

ALLOY C276 WETTED MATERIAL FINISH OPTIONS

B - 20uin Ra Mechanical
C - 15uin Ra Mechanical
M - 15uin Ra Electropolished

MOUNT SIZE OPTION

M - 4"

HEATER OPTION

B - BioCam™ with Integral Heater

MOUNT TYPE OPTION

G - Tri-Clamp® / NA-Connect®

*Requires NA-Connect or equivalent mount

****See Datasheet TA12100-1012 for Vector Control Module details.**

Canty reserves the right to upgrade from Stainless Steel to the Hastelloy family of materials at no additional charge.

CANTY

JM Canty Inc
JM Canty Intl Ltd
JM Canty Asia

Buffalo, NY USA
Dublin, Ireland
Phuket, Thailand

Ph: (716) 625 4227
Ph: + 353 (01) 882 9621
Ph: + 66 83 9689548

Fax: (716) 625 4228
Fax: +353 (01) 882 9622

www.jmcanty.com

Document P/N: TA11500-1033 Rev. 8

All registered trademarks are the property of their respective owners.