

# CANTY

## PROCESS TECHNOLOGY

### ULTRATEMP™ CAM - GROUND FLARES



#### GROUND FLARES

A flare is used to dispose of flammable material by combustion. Ground flares can be a replacement for a single stack flare for companies. The multi-point ground flares (MPGF) need to be monitored by a camera per EPA regulations. A video camera that is capable of continuously recording (i.e., at least one frame every 15 secs with time and date stamps) images of the flare flame.

#### THE CANTY ADVANTAGE

The CANTY UltraTemp™ is a vision-based camera system used with the CantyVision™ to monitor the flares inside an enclosed ground flare unit. The CantyVision™ software accurately measures smoking conditions as well as pilot in the flare for complete control. In comparison to thermocouples which are costly, not reliable, and monitor only one tube, a camera system can monitor multiple tubes at the same time. The CantyVision™ software can output a signal to alarm if the flare has a smoking condition over a certain time to an operator screen, PLC, or DCS for closed loop control. The system can then record video and take images according to EPA regulations. Video and images can be stored. By mounting into the ground flare wall the electronics are protected by the fused glass from the temperatures of upset conditions. The spray ring is provided to have clean instrument air passing through it to keep the lens clean and free from debris. No need for a pole where any maintenance can become a problem and very costly. By mounting in the wall, the flare camera can be accessed from the safe side of the flare wall.

#### FEATURES

- **MEETS EPA REQUIREMENTS**
- Temperature Control
- Visual Verification
- 1 Camera for Multiple Flare Monitoring
- Real Time Analysis
- Jet Spray Ring For Cleaning
- Flush Mount Standard; Additional Models Up to 3' Insertion Available
- Wall Mounted For Easy, Safe Access
- More Cost Effective Than Infrared
- Eliminate Errors Associated With Pyrometers
- 1 Degree Accuracy
- Data Can Be Stored With Images Or Video
- All Data can be output via 4-20mA or OPC

#### APPLICATIONS

- Ground Flare Monitoring
- Ethylene Furnace
- Hydrogen Reformer
- Reheat Boiler
- Millisecond Furnace
- Hydrocracking

#### BENEFITS

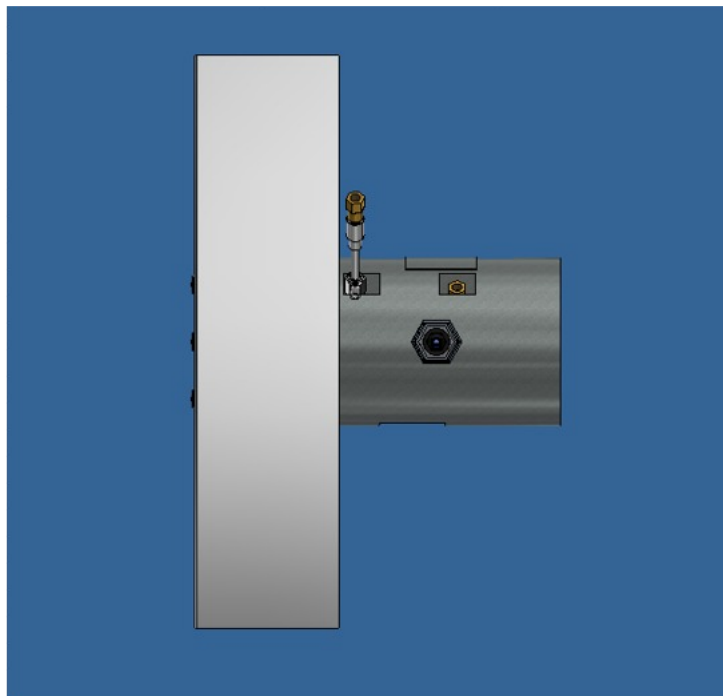
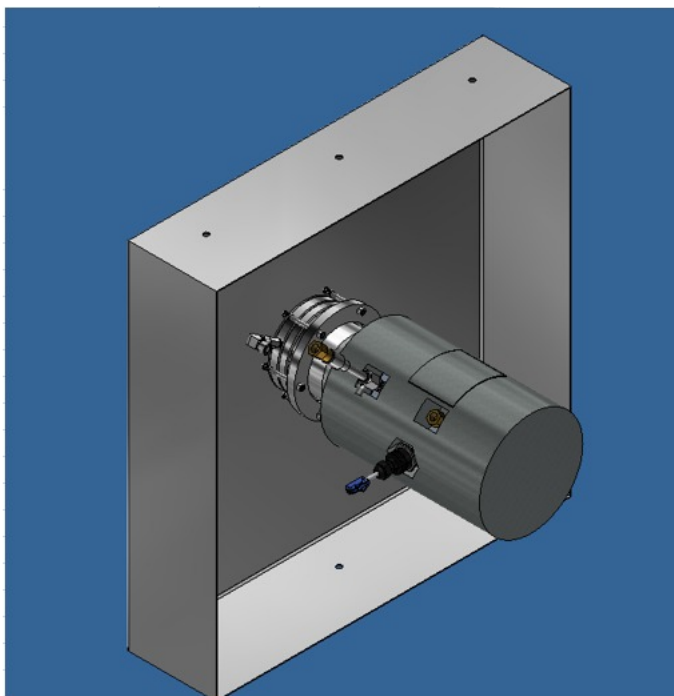
- **NO NEED FOR POLE SETUP**
- Continuous Output
- Ethernet Output
- Optional Save Video & Images per EPA
- Wall Mounted

#### SPECIFICATIONS

- Power: 12V / 24V / 120 VAC / 60 Hz (230 VAC / 50 Hz) options available
- Ethernet Camera GigE Connection
- Temperature Rating\*- 800F sustained (1400 deg F for 30 seconds, 1000 deg F for 10 minutes)

#### ANALYSIS WITH CANTYVISION™

- CantyVision™ System Can Measure And Control Your Process Parameters
- Inflow™ Systems Use A live Video Data
- CantyVision™ Can Perform Concentration / Particle Size / Count Functions
- Microsoft Windows Based Operating System
- Ethernet OPC or 4-20 mA Devices



## Ordering Information

HOW TO ORDER: Select the appropriate symbols and build a part number :

### EXAMPLE:

**VFC - E 1 A D 3 3**

CAMERA TYPE
E - ENET
V - ONVIF
N - CLR NEUTRAL

LENS
1 - V340 - 180

COOLING STYLE
A - AIR COOLED
W- WATER COOLED

MOUNTING SIZE
3 - 24 X 24

ENVIRONMENTAL RATING
3 - EXP
4 - FP
5 - NEMA4/IP66

INPUT POWER
D - 120/230 50/60Hz
F - POE
K - POE / 120 / 230

NOTE: Accessory Kit part number: V401-KIT available to aid in installation contains 100-1000 SCFH and 60-600 SCFH Flowmeters along with a 0.5 micron oil/vapor removal filter.

\*for alternative temperature ratings consult Canty for alternative models

**CANTY**

Buffalo, NY USA  
Ph: (716) 625 4227

Dublin, Ireland  
Ph: + 353 (01) 882 9621

Phuket, Thailand  
Ph: + 66 (83) 968 9548