

# CANTY

## PROCESS TECHNOLOGY

### FUSEVIEW™ NPT THREADED SIGHT GLASS



#### THE CANTY ADVANTAGE

CANTY Fuseview™ NPT threaded sight glasses have been engineered to meet all your process and safety needs. All standard Fuseviews™ are designed and tested to ensure the safest product available. Canty can provide certification of material and testing if required, typical of ASME code requirements for process vessels.

#### UNMATCHED SAFETY, RELIABLE

All CANTY sight glasses feature the Fuseview™ window. Our unique fused glass windows far exceed all conventional tempered glass windows in safety and performance. By fusing glass to metal, a high pressure, high safety, hermetic seal is formed. The fused glass technology ensures safety with every Fuseview™. What's more, our windows can easily be removed for cleaning. Canty windows do not have to be discarded, as do traditional tempered glass windows. Canty fused glass windows can be re-used again and again.

#### FEATURES

- Carbon Steel, Stainless Steel or Hastelloy®C276 one piece construction
- Pressure rating to 1,000 PSI [68 bar]
- Standard temperatures to 450°F [232°C]
- One piece construction
- Connects to standard NPT connection (straight thread options available)
- Special sizes available per drawing request

#### ADVANTAGES OF THE FUSEVIEW™

- Extremely high strength due to radial compression on the hermetically sealed glass
- Very high impact strength and thermal shock resistance due to prestressing
- Operates under positive or negative pressure
- Certification on material and pressure rating is available, typical of ASME code requirements.

#### CANTY FUSEVIEW™ VS. OTHERS

- No loss of glass temper over time
- Scratches do not affect safety or life
- Unlike tempered glass, a FuseView™ will not blow out if the surface is damaged
- No extra gaskets, shims, packing, or retaining rings to worry about

**CANTY**

Buffalo, NY USA  
Ph: (716) 625 4227

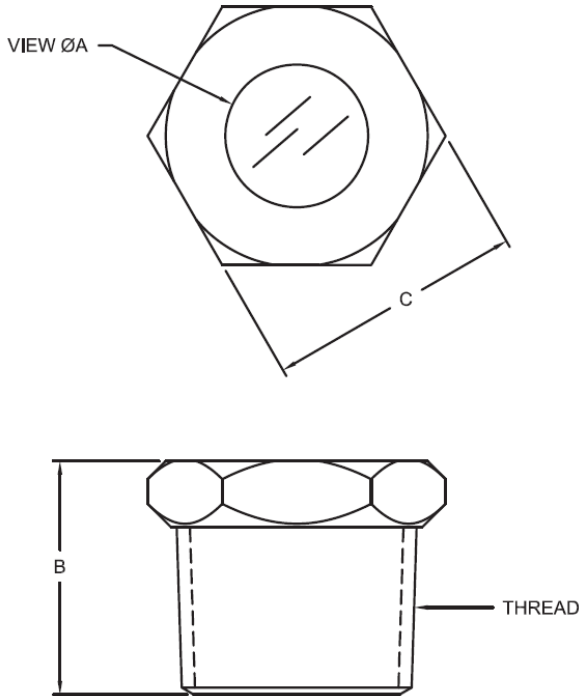
Dublin, Ireland  
Ph: + 353 (01) 882 9621

Phuket, Thailand  
Ph: + 66 (83) 968 9548

[www.jmcanty.com](http://www.jmcanty.com)

Document P/N: TA11500-1084 Rev. 1

# FUSEVIEW™ NPT THREADED SIGHT GLASS SPECIFICATIONS



SIZE	THREAD	ØA	B	C	TEMP RATING
1/4"	1/4-18	5/16"	3/4"	5/8"	450°F [232°C]
3/8"	3/8-18	7/16"	3/4"	3/4"	450°F [232°C]
1/2"	1/2-14	19/32"	7/8"	15/16"	450°F [232°C]
3/4"	3/4-14	5/8"	1 1/16"	1 1/16"	450°F [232°C]
1"	1-11 1/2	3/4"	1 1/16"	1 3/8"	450°F [232°C]
1 1/4"	1 1/4-11 1/2	15/16"	1 1/4"	1 3/4"	450°F [232°C]
1 1/2"	1 1/2-11 1/2	1 1/8"	1 1/4"	2"	450°F [232°C]
2	2-11 1/2	1 1/2"	1 11/16"	2 1/2"	450°F [232°C]
2 1/2"	2 1/2-8	1 7/8"	1 15/16"	3"	450°F [232°C]
3	3-8	2 1/8"	2 5/16"	3 5/8"	450°F [232°C]
4	4-8	3"	2 1/2"	4 3/4"	450°F [232°C]

## Ordering Information

HOW TO ORDER: Select the appropriate options and build a part number as shown:

### EXAMPLE:

**S 5      100A0**

PRESSURE:

A = 150 psi

C = 500 psi

E = 1,000 psi

\*Higher pressure ratings available. Consult factory.

SIZE:

A = 1/4"

B = 3/8"

C = 1/2"

D = 3/4"

E = 1"

F = 1 1/4"

G = 1 1/2"

H = 2"

I = 2 1/2"

J = 3"

K = 4"

MATERIAL: (wetted)

A = Carbon Steel

B = 316L Stainless Steel\*

D = Hastelloy® C276 or equal

\*Canty reserves the right to upgrade to Hastelloy® C-family of alloys or equal at their own cost. All registered trademarks are the property of their respective owners.

**CANTY**

Buffalo, NY USA  
Ph: (716) 625 4227

Dublin, Ireland  
Ph: + 353 (01) 882 9621

Phuket, Thailand  
Ph: + 66 (83) 968 9548