

CANTY

PROCESS TECHNOLOGY

SPRAY DRYER INSERTION MONITORING CAMERA WITH INTEGRAL COOLING CHAMBER



FEATURES

- Fiber optic "cold" light means no product bake-on
- Fused glass interface
- Single nozzle viewing / illuminating
- Maintenance free LED
- Integral cooling chamber

APPLICATIONS

- Dairy Powders
- Pharmaceutical Powders
- Tablet Coaters

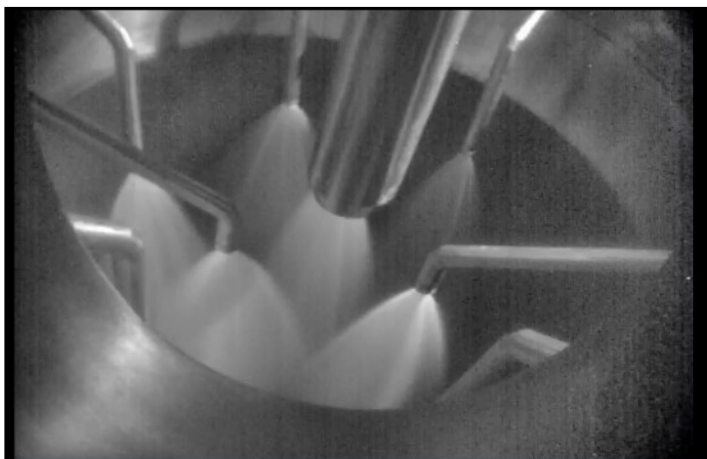
THE CANTY ADVANTAGE

CANTY Spray Dryer Monitoring Systems are vision based, industrial camera/light combinations used to view spray nozzle patterns in real time. This allows operators to see changes in the profile of the spray pattern, and detect clogging/bearding before it becomes a problem. Operators can easily view for product build-up before there is a chance for fire.

This vision system can be fully automated by utilizing CANTYVISION™ software to measure the size and shape of the spray pattern profile. OPC UA Modbus or 4-20mA alarms can then be sent to the control system if nozzles clog or the spray pattern changes.

SPECIFICATIONS

- High-resolution gigabit Ethernet camera
- Maintenance free LED light (multiple input voltage)
 - 24V DC; 120V AC, 330V DC
- Power over Ethernet available on camera
- 4" Tri-Clamp® mounting connection
- Integral cooling chamber on camera insertion
- Rated for 100 psi at 450°F - consult factory for alternative options
- Weatherproof / IP66
- Hazardous area rated options available
- Wetted material - 316L Stainless Steel
- Non-hazardous area rated systems come with integral molded seals for PoE
- Hazardous area rated models; user to provide glands and seals in accordance with area classifications
- Compatible with CVIT software systems for analysis



All registered trademarks are property of their respective owners.

CANTY

www.jmcanty.com

Document P/N: TA11500-1096 Rev. 2

Buffalo, NY USA

Ph: (716) 625 4227

Dublin, Ireland

Ph: + 353 (01) 882 9621

Phuket, Thailand

Ph: + 66 (83) 968 9548

Ordering Information

HOW TO ORDER: Select the appropriate symbols to build a part number as shown:

EXAMPLE:

SDC - E 5 BB MA 2 2

VIDEO SYSTEM FORMAT	
E -	Ethernet (recommended and can be used with Canty Vision Software for Automation and Control)
V -	Onvif

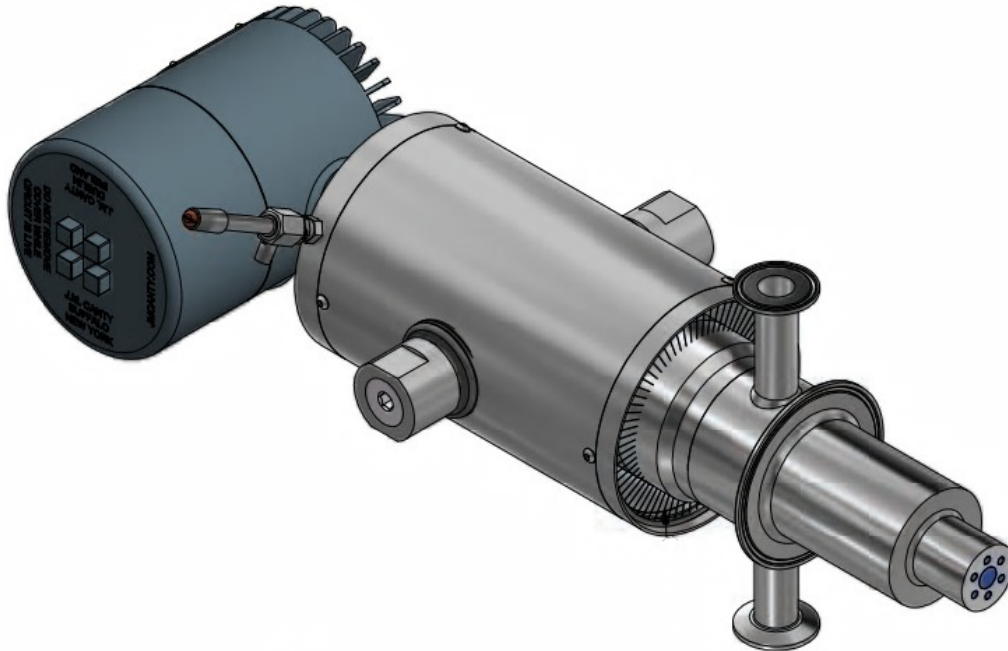
ENVIRONMENTAL RATING	
5 -	NEMA4 Weatherproof/IP66
3 -	Explosion Proof
4 -	Flame Proof (Atex)

WETTED MATERIAL	
BB -	316L Stainless Steel*

LIGHT SOURCE INPUT POWER	
2 -	24V DC
A -	120V AC
B -	220V AC

CAMERA INPUT POWER	
F -	Power Over Ethernet
2 -	24V DC* (* for alternative power input voltage such as 120V AC and 230V DC consult factory for separate power supply options)

PROCESS CONNECTION (SIZE AND TYPE)	
MA -	4" SANITARY CLAMP with integral insertion and cooling channel (Cooling air does not exhaust into the process)



All registered trademarks are property of their respective owners

CANTY

Buffalo, NY USA

Dublin, Ireland

Phuket, Thailand

www.jmcanty.com

Ph: (716) 625 4227

Ph: + 353 (01) 882 9621

Ph: + 66 (83) 968 9548

Document P/N: TA11500-1096 Rev. 2