

CANTY

PROCESS TECHNOLOGY

SINGLE-USE PARTICLE ANALYZER

Combining the latest in Ethernet technology with Cauty single use, lighting and CANTYVISIONCLIENT™ software, the INFLOW™ Process Particle Analyzer provides real time particle size and shape analysis. Various models measure 0.7 micron - 20,000 micron particles under process conditions.

No sampling or lab analysis is required! Each unit can be fully integrated into existing TCP/IP networks. Some systems may require a side stream to control flow rates.

CANTYVISIONCLIENT™ software is installed on a user-supplied PC, and connected to the INFLOW™ measurement system via Gigabit Ethernet network. Live images of the process can be viewed from any networked PC. The live images are remotely analyzed by CANTYVISIONCLIENT™ software. A comprehensive library of standard utilities and data functions provide a multitude of *real-time* process information.

The CANTY S.U. Minicell uses a 0-900 micron variable insertion measurement gap. As with other single use parts, the CANTY flowcell has been made to be replaced with each batch. The flowcell has options to be made out of generic polycarbonate or Makrolon 2458 depending if working in a pilot plant or production. The image processor can be configured with multiple zone sensing on the image of the fluid. The results from the zones can be compared to base line values for reliability and alarm on detection of a problem. The data will output following USP1788 count. The S.U. Minicell allows particle analyzing in-line as a single use operation.

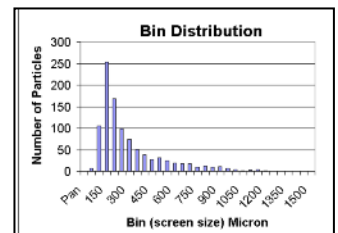
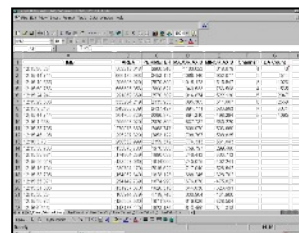
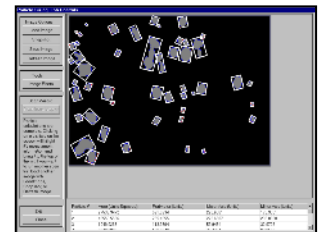
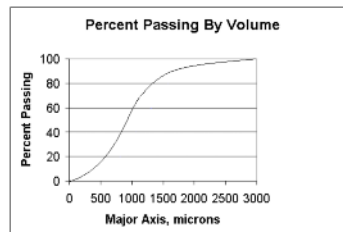


FEATURES & ADVANTAGES

- Online particle size & microscope
- 0.7 micron - 20,000 micron Particle Size Options. See Part Number.
- Gigabit Ethernet Connectivity
- Easily Installed Modular Unit / Weatherproof options
- Regulated Light Source Emits Cold Light To Prevent Product Bake-On
- OPC, 4-20mA Current Loop, EXCEL spreadsheet and Relay Outputs Are Available
- USP 788/1788 Measurement
- Provides Both A Real Time, In Flow Measurement And A Continuous Real Time View Of The Product
- Various Process Connection Sizes Available (Leurer or Hose Barb)
- High Throughput
- Digital Video Storage to Customer PC / DVD or Network Drive

APPLICATIONS

- Particle Count to USP 1788 of single-use bag
- Validation of Single-Use Assmby USP 1788
- Turbidity and TSS (Eliminate Bubbles)
- WFI Water - Bio and Rouge Detection (USP 1788)
- ASTM E55- E6030 Subvisible Particles



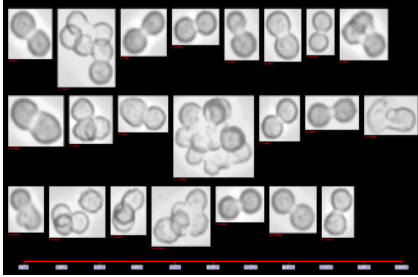
CANTY

JM Cauty Inc
JM Cauty Intl Ltd

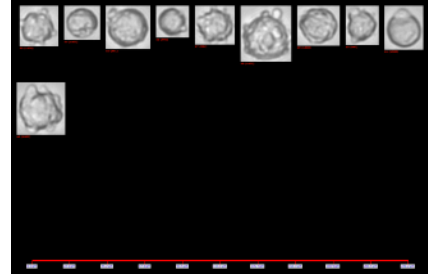
Buffalo, NY USA
Dublin, Ireland

Ph: (716) 625 4227
Ph: +353 (01) 882 9621

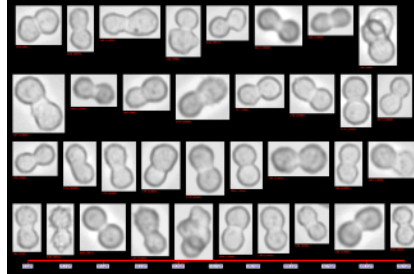
Fax: (716) 625 4228
Fax: +353 (01) 882 9622



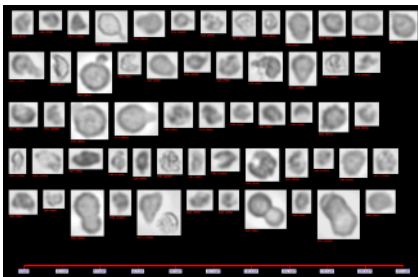
AGGLOMERATED CELLS



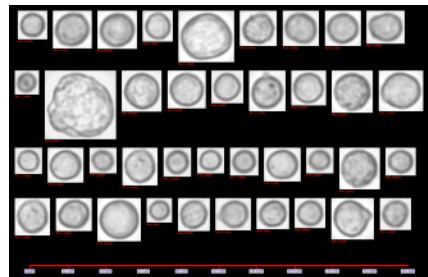
APOPTOTIC CELLS



MITOTIC CELLS



NECROTIC CELLS



VIAIBLE CELLS

Ordering Information

HOW TO ORDER: Select the appropriate symbols and build a part number :

EXAMPLE:

SUM - O C 1 M C A 1 6 K O

CONNECTION TYPE	
F - Luer	
H - Hose Barb	

CONNECTION SIZE	
0 - 1/2" (12.7mm)	4 - 4" (100mm)
1 - 1" (25mm)	6 - 6" (150mm)
5 - 1.5" (38mm)	8 - 8" (200mm)
2 - 2" (50mm)	9 - 10" (254mm)
3 - 3" (80mm)	A - 12" (305mm)
	-

INPUT POWER
A - 120 V AC / 60Hz / 250W
B - 230 V AC / 50Hz / 250W
2 - 24 V DC / 250W

WETTED METAL MATERIAL
M - Makrolon 2458
P - Polycarbonate