

CANTY

PROCESS TECHNOLOGY

BOWS - BUBBLES, OIL, WATER, SOLIDS ANALYZER

The presence of solid particles and droplets in fluids can indicate increased system wear, poor fluid filtration, and lead to further process upsets. Therefore, detecting solids and droplets in fluids is crucial in managing the operation of equipment and processes in order to optimize performance and enhance life cycles. Knowledge of particle shape, in addition to particle count, enables the user in many cases to assess the type of particulate present which can assist in pinpointing high risks items that can lead to future failure allowing for preventative measures to be taken.

Combining the latest in high speed gigabit Ethernet camera technology along with Canty's high intensity lighting, and imaging software, the system provides real time particle analysis of solids, droplets and air bubbles in fluids. The method involves flowing the fluid between a microscopic camera and high intensity light source. Images are then analyzed under a number of different parameters to provide size, shape and concentration data. The compact footprint and easy to use CantyVision graphical user interface allows for use in any laboratory.



FEATURES AND BENEFITS

- Data reporting to ISO4406, ASTM 8072, and USP788/1788
- Detects, discerns, and quantifies solids, droplets and air in fluids
- Visual Verification through saved images and videos
- Ethernet Connectivity
- Intuitive Software Interface
- Ability to integrate into existing LIMS
- Analysis of particles down to 0.7 μm
- Compact design for laboratory use
- Sub classification of solid particles based on shape analysis
- Independent measurement of droplets, bubbles, and solid particles
- Compact design for laboratory use
- Sub classification of solid particles based on shape analysis
- High intensity lighting for maximum magnification

THE CANTY ADVANTAGE

- Real time measurement, particle size, count & shape/characterization.
- Visual verification and the ability record video.
- Lab-friendly design
- Image based microscopy / Two dimensional
- Multiple flow configurations available

SPECIFICATIONS

- 120-240VAC Input Power
- Automated and integrated vacuum and Peristaltic Pumps Included
- Adjustable sample loading mechanism

CANTY

www.jmcanty.com
Document P/N: TA11500-1120_R0

JM Canty Inc
JM Canty Intl Ltd

Buffalo, NY USA
Dublin, Ireland

Ph: (716) 625 4227
Ph: + 353 (01) 882 9621

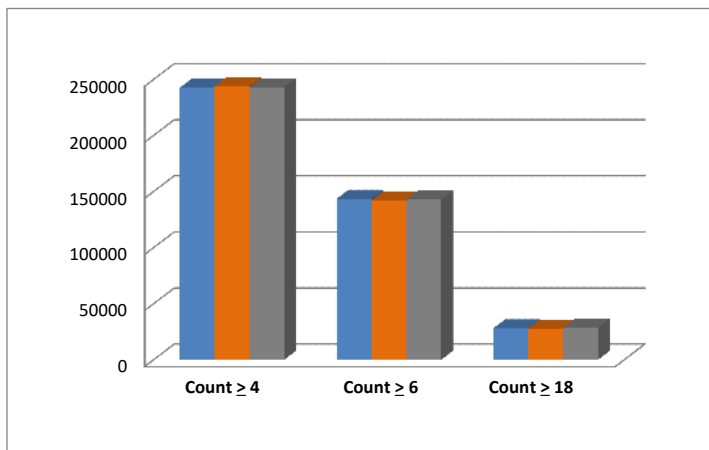
ORDERING INFORMATION

PART NUMBER (EDPM Seals)=

BOWS - 0 0 L 6

PART NUMBER (Viton Seals)=

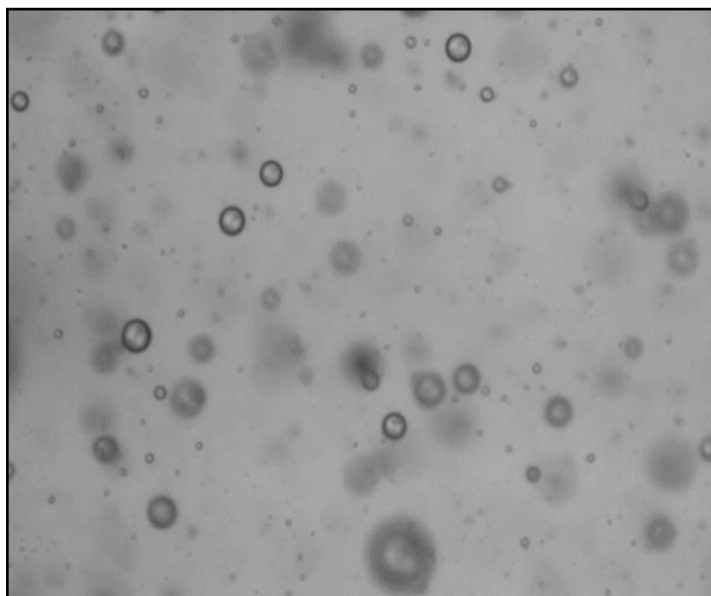
BOWS - 0 0 C 6



ISO > 4	ISO > 6	ISO > 14
25	24	22
25	24	22
25	24	22

Count & size data output

ISO 4406 Code Reporting



Visual images to verify contamination

Compact Laboratory Design

CANTY

www.jmcanty.com
Document P/N: TA11500-1120_R0

JM Canty Inc
JM Canty Intl Ltd

Buffalo, NY USA
Dublin, Ireland

Ph: (716) 625 4227
Ph: + 353 (01) 882 9621