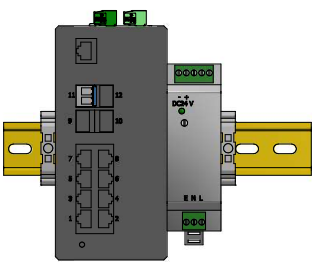


87654321

HOUSING OPTIONS FOR FIBER CONVERTERS

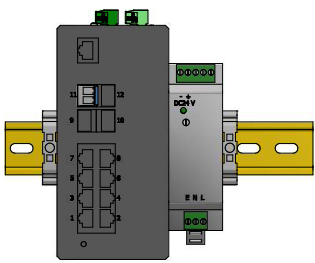
PROCESS AREACONTROL ROOM



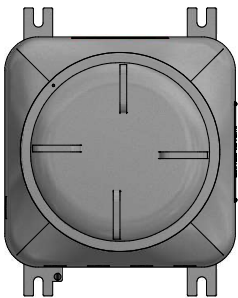
NONRATED DIN RAIL MOUNT

Part numbers for NON POE
VC11954-100 -For Singlemode
VC12072-100 -For Multimode

Part numbers for POE
VC12081-100 -For Singlemode
VC12086-100 -For Multimode



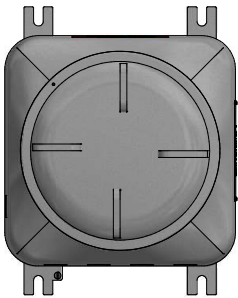
NONRATED DIN RAIL MOUNT



WALL MOUNTED ALUMINUM ENCLOSURE
CLASS I DIV I / CLASS I DIV II RATED

Part numbers for NON POE
VC11954-200 -For Singlemode
VC12072-200 -For Multimode

Part numbers for POE
VC12081-200 -For Singlemode
VC12086-200 -For Multimode



WALL MOUNTED ALUMINUM ENCLOSURE
CLASS I DIV I / CLASS I DIV II RATED



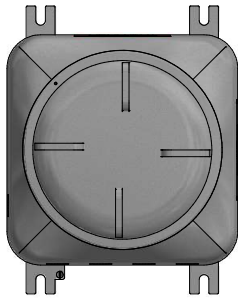
WALL MOUNTED FIBERGLASS ENCLOSURE
NEMA 4X WP/IP RATED

Part numbers for NON POE
VC11954-300 -For Singlemode
VC12072-300 -For Multimode

Part numbers for POE
VC12081-300 -For Singlemode
VC12086-300 -For Multimode



WALL MOUNTED FIBERGLASS ENCLOSURE
NEMA 4X WP/IP RATED



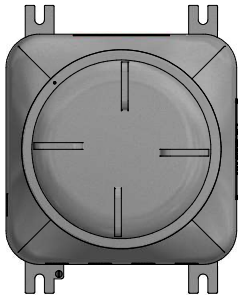
WALL MOUNTED ALUMINUM ENCLOSURE
CLASS I DIV I / CLASS I DIV II RATED

Part numbers for NON POE
VC11954-400 -For Singlemode
VC12072-400 -For Multimode

Part numbers for POE
VC12081-400 -For Singlemode
VC12086-400 -For Multimode



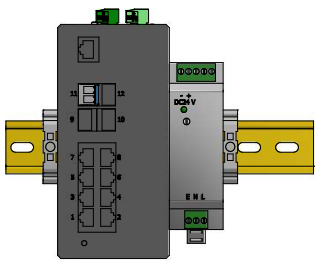
WALL MOUNTED FIBERGLASS ENCLOSURE
NEMA 4X WP/IP RATED



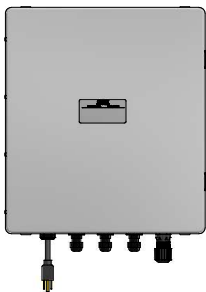
WALL MOUNTED ALUMINUM ENCLOSURE
CLASS I DIV I / CLASS I DIV II RATED

Part numbers for NON POE
VC11954-500 -For Singlemode
VC12072-500 -For Multimode

Part numbers for POE
VC12081-500 -For Singlemode
VC12086-500 -For Multimode



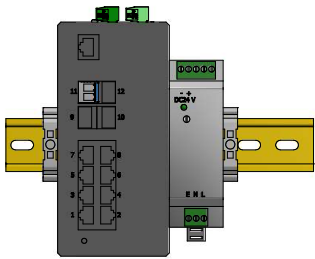
NONRATED DIN RAIL MOUNT



WALL MOUNTED FIBERGLASS ENCLOSURE
NEMA 4X WP/IP RATED

Part numbers for NON POE
VC11954-600 -For Singlemode
VC12072-600 -For Multimode

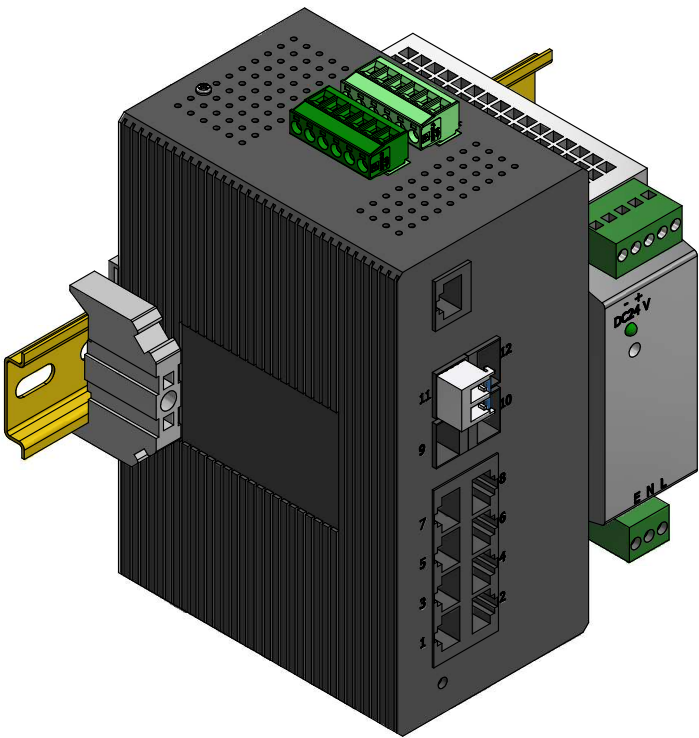
Part numbers for POE
VC12081-600 -For Singlemode
VC12086-600 -For Multimode



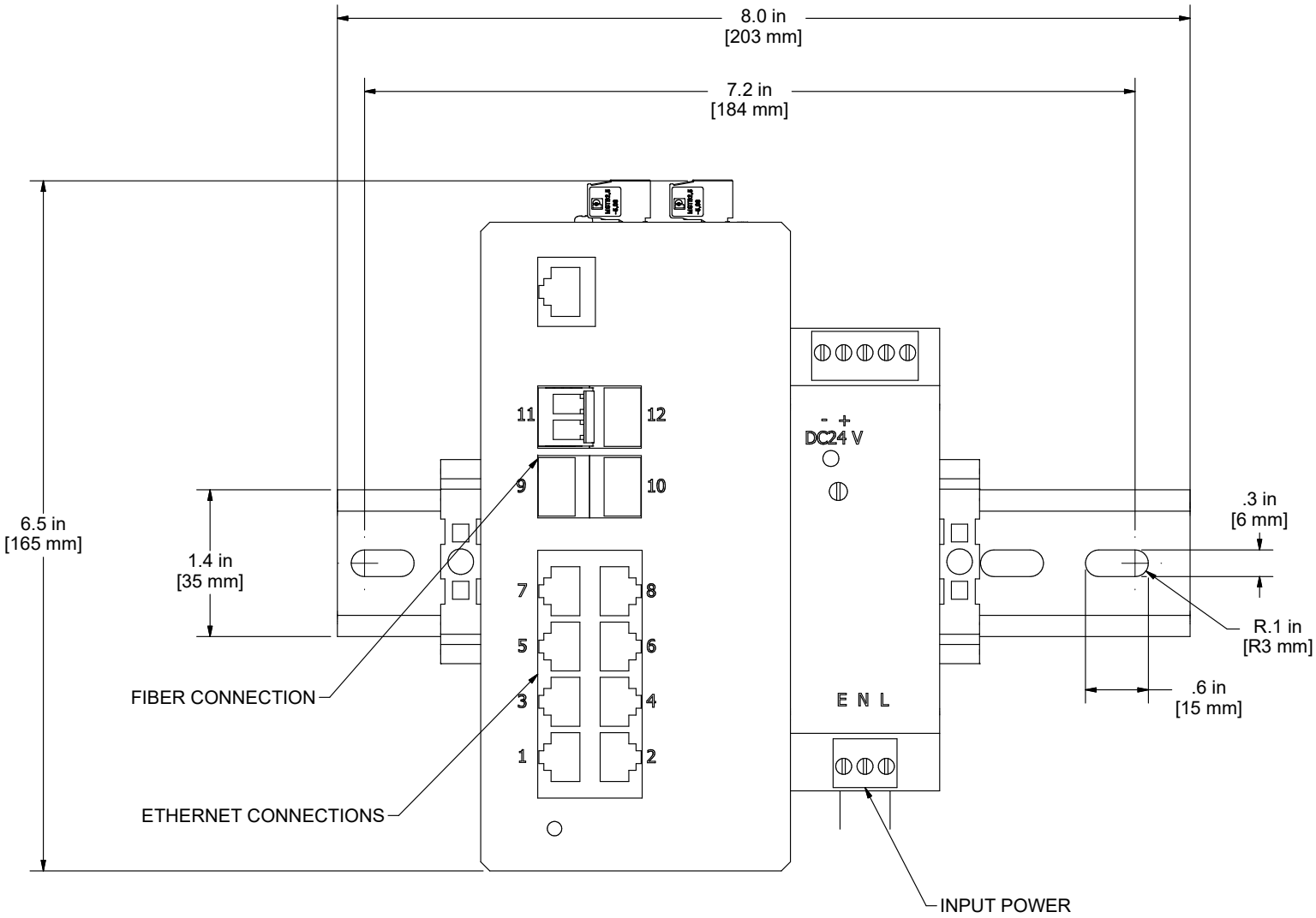
NONRATED DIN RAIL MOUNT

<div>NOTICE</div> <div>THIS DRAWING IS THE PROPERTY OF J.M. CANTY AND MUST BE RETURNED WITHOUT REPRODUCTION OR DUPLICATION, AT ANY TIME UPON REQUEST, BUT IN ANY EVENT AS SOON AS IT HAS SERVED THE PURPOSE FOR WHICH IT WAS FURNISHED. WHILE IN THE POSSESSION OF THE RECIPIENT, IT MUST BE PROPERLY SAFEGUARDED AGAINST DISCLOSURE TO ANYONE EXCEPT THOSE EMPLOYEES WHO REQUIRE IT FOR WORK OR JOB. THE RECIPIENT MUST KEEP CONFIDENTIAL AND REQUIRE HIS (HER) EMPLOYEES TO KEEP CONFIDENTIAL THE INFORMATION CONTAINED HERE ON.</div>	<div>IMPORTANT</div> <div>FOR THE REQUIRED MANUFACTURING SPECIFICATIONS SEE DOCUMENT #A4955</div> <div>NOTE: FAILURE TO RECEIVE DOCUMENT DOES NOT WAIVE VENDOR RESPONSIBILITY</div>	DRAWN BY	DATE	J.M. CANTY INC. 6100 DONNER RD. BUFFALO, N.Y. 14094 U.S.A.		<div>CANTY</div> <div>WWW.JMCANTY.COM</div>	J.M. CANTY INTL. LTD. BALLYCOOLIN BUS. PK. BLANCHARDSTOWN DUBLIN 15, IRELAND		
		BLC	11/15/2017						
		APPROVAL	DATE						
		BLC	6/15/2022						
		ENGINEERING ANALYSIS	DATE	TITLE					
		CURRENT		SALES DRAWING/ GENERAL UNDERSTANDING OF CANTY CAMERA/ANALYZER CONNECTIVITY					
		MFG. APPROVAL	DATE						
		PENDING							
		QUALITY CONTROL	DATE						

SHEET 2 OF 6



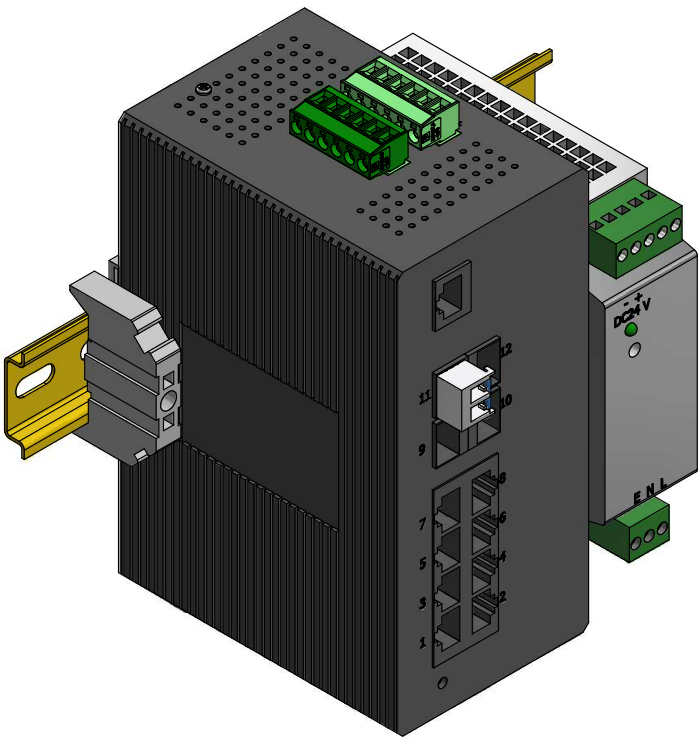
SPECIFICATIONS	
P/N	SINGLEMODE MEDIA CONVERTERS (VC11954 SERIES)
INPUT SPECIFICATIONS	100-240VAC, 50/60 Hz
FEATURES <ul style="list-style-type: none">- FIBER CONVERTERS CAN RUN UP TO 6 CANTY CAMERAS- CUSTOMER TO SELECT ENCLOSURE FROM PAGE 1- MAX. RECOMMENDED FIBER CABLE DISTANCE BETWEEN CONVERTERS IS 6.2 miles. [10Km] WITH FIBER BEING LC-LC 10G SINGLEMODE DUPLEX 9/125.- IF CABLE DOESN'T COME IN DISTANCES REQUIRED CONSULT FACTORY- MAX RECOMMENDED CAT 6A CAMERA OUTPUT ETHERNET CABLE DISTANCE 328 FT. [100 m] FOR ETHERNET FROM CAM. TO CONVERTER AND CONVERTER TO COMPUTER.	



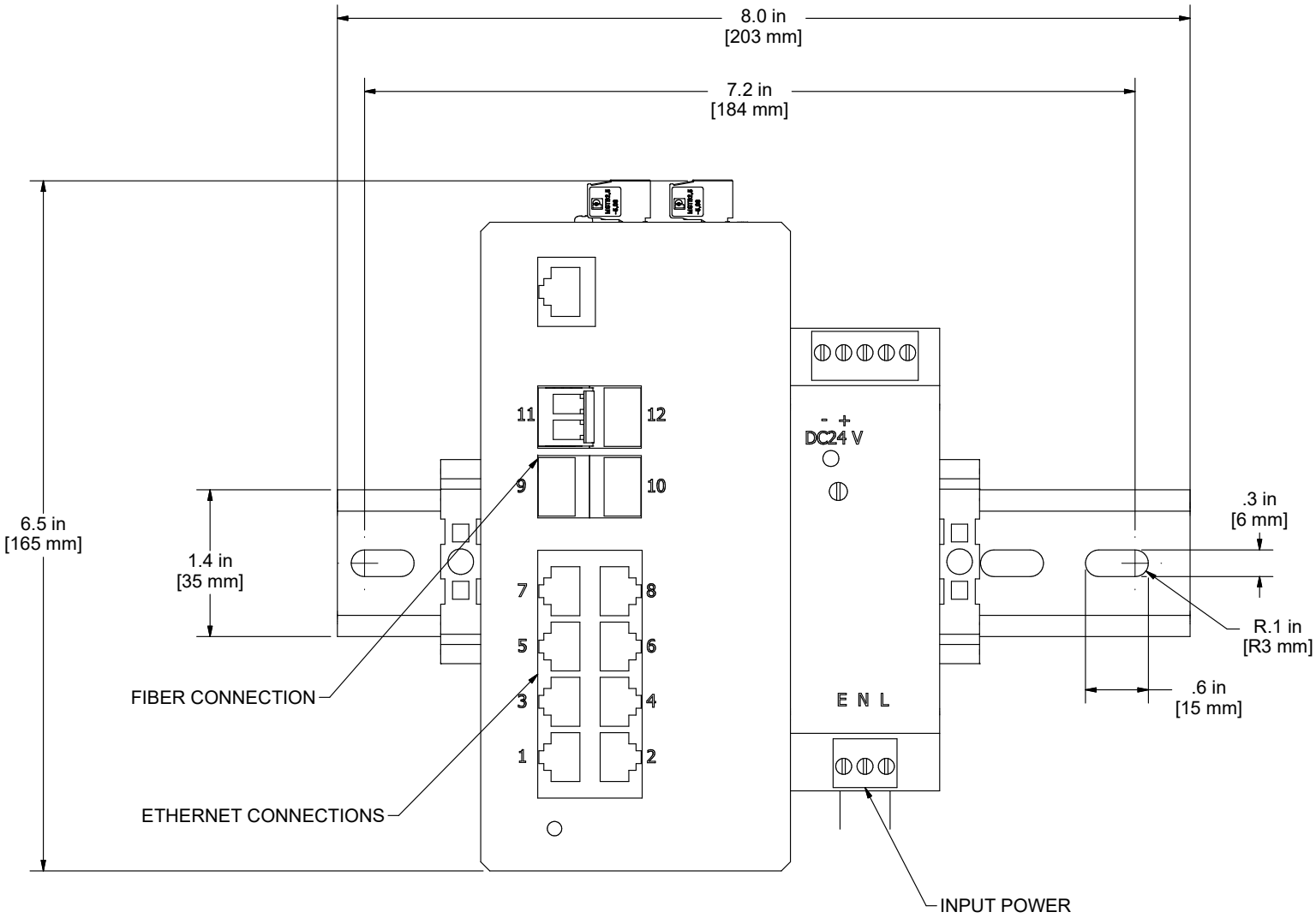
- NOTES:**
- 1. SEE SHEET 1 FOR FIBER CONVERTER HOUSING OPTIONS.
 - 2. SHOWN DIN-RAIL COMPONENTS REFERENCE HEIGHT IS 5.1 IN [130 mm]

<div>NOTICE</div> <div>THIS DRAWING IS THE PROPERTY OF J.M. CANTY AND MUST BE RETURNED WITHOUT REPRODUCTION OR DUPLICATION, AT ANY TIME UPON REQUEST, BUT IN ANY EVENT AS SOON AS IT HAS SERVED THE PURPOSE FOR WHICH IT WAS FURNISHED. WHILE IN THE POSSESSION OF THE RECIPIENT, IT MUST BE PROPERLY SAFEGUARDED AGAINST DISCLOSURE TO ANYONE EXCEPT THOSE EMPLOYEES WHO REQUIRE IT FOR WORK OR JOB. THE RECIPIENT MUST KEEP CONFIDENTIAL AND REQUIRE HIS (HER) EMPLOYEES TO KEEP CONFIDENTIAL THE INFORMATION CONTAINED HERE ON.</div>	<div>IMPORTANT FOR THE REQUIRED MANUFACTURING SPECIFICATIONS SEE DOCUMENT #A4955</div> <div>NOTE: FAILURE TO RECEIVE DOCUMENT DOES NOT WAIVE VENDOR RESPONSIBILITY</div>	DRAWN BY	DATE	J.M. CANTY INC. 6100 DONNER RD. BUFFALO, N.Y. 14094 U.S.A.		<div>CANTY</div> <div>WWW.JMCANTY.COM</div>	J.M. CANTY INTL. LTD. BALLYCOOLIN BUS. PK. BLANCHARDSTOWN DUBLIN 15, IRELAND	
		APPROVAL	DATE					
		BLC	6/15/2022					
		ENGINEERING ANALYSIS	DATE	TITLE SALES DRAWING/ GENERAL UNDERSTANDING OF CANTY CAMERA/ANALYZER CONNECTIVITY				
		CURRENT						
MFG. APPROVAL	DATE	REVISION		FILE NAME				
PENDING		3		TA11950-1024_R3				
QUALITY CONTROL	DATE	SCALE AS NOTED		SIZE C		SHEET 2 OF 6		

SHEET 3 OF 6



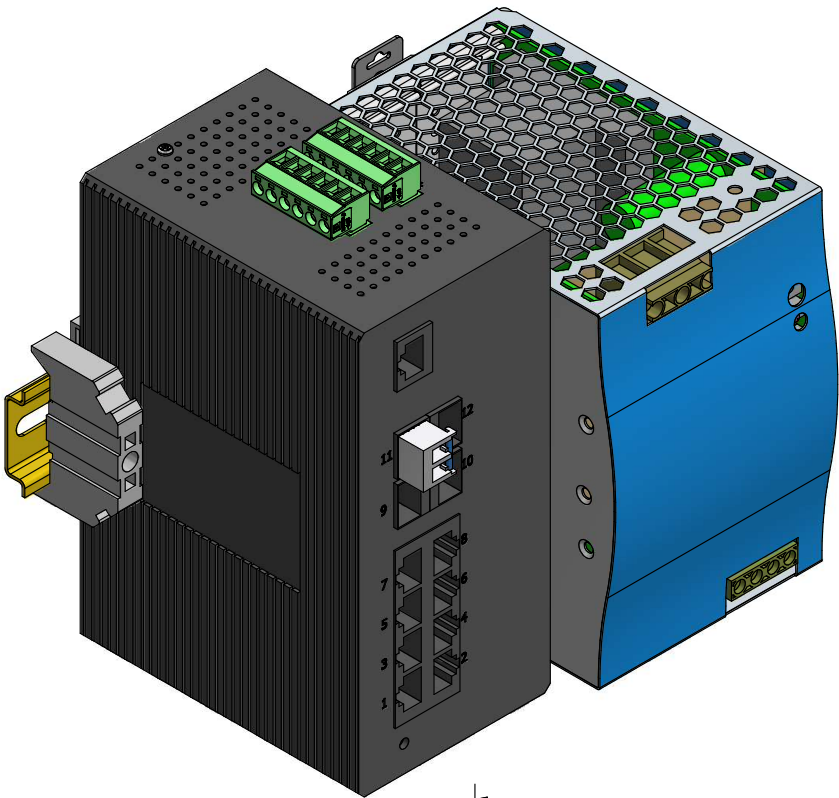
SPECIFICATIONS	
P/N	MULTIMODE MEDIA CONVERTERS (VC12072 SERIES)
INPUT SPECIFICATIONS	100-240VAC, 50/60 Hz
FEATURES	
- FIBER CONVERTERS CAN RUN UP TO 6 CANTY CAMERAS	
- CUSTOMER TO SELECT ENCLOSURE FROM PAGE 1	
- MAX. RECOMMENDED FIBER CABLE DISTANCE BETWEEN CONVERTERS IS 1312 FT. [400 m] WITH FIBER BEING LC-LC 10G MULTIMODE DUPLEX 50/125 OM4/OM5	
- IF CABLE DOESN'T COME IN DISTANCES REQUIRED CONSULT FACTORY	
- MAX RECOMMENDED CAT 6A CAMERA OUTPUT ETHERNET CABLE DISTANCE 328 FT. [100 m] FOR ETHERNET FROM CAM. TO CONVERTER AND CONVERTER TO COMPUTER.	



- NOTES:
- SEE SHEET 1 FOR FIBER CONVERTER HOUSING OPTIONS.
 - SHOWN DIN-RAIL COMPONENTS REFERENCE HEIGHT IS 5.1 IN [130 mm]

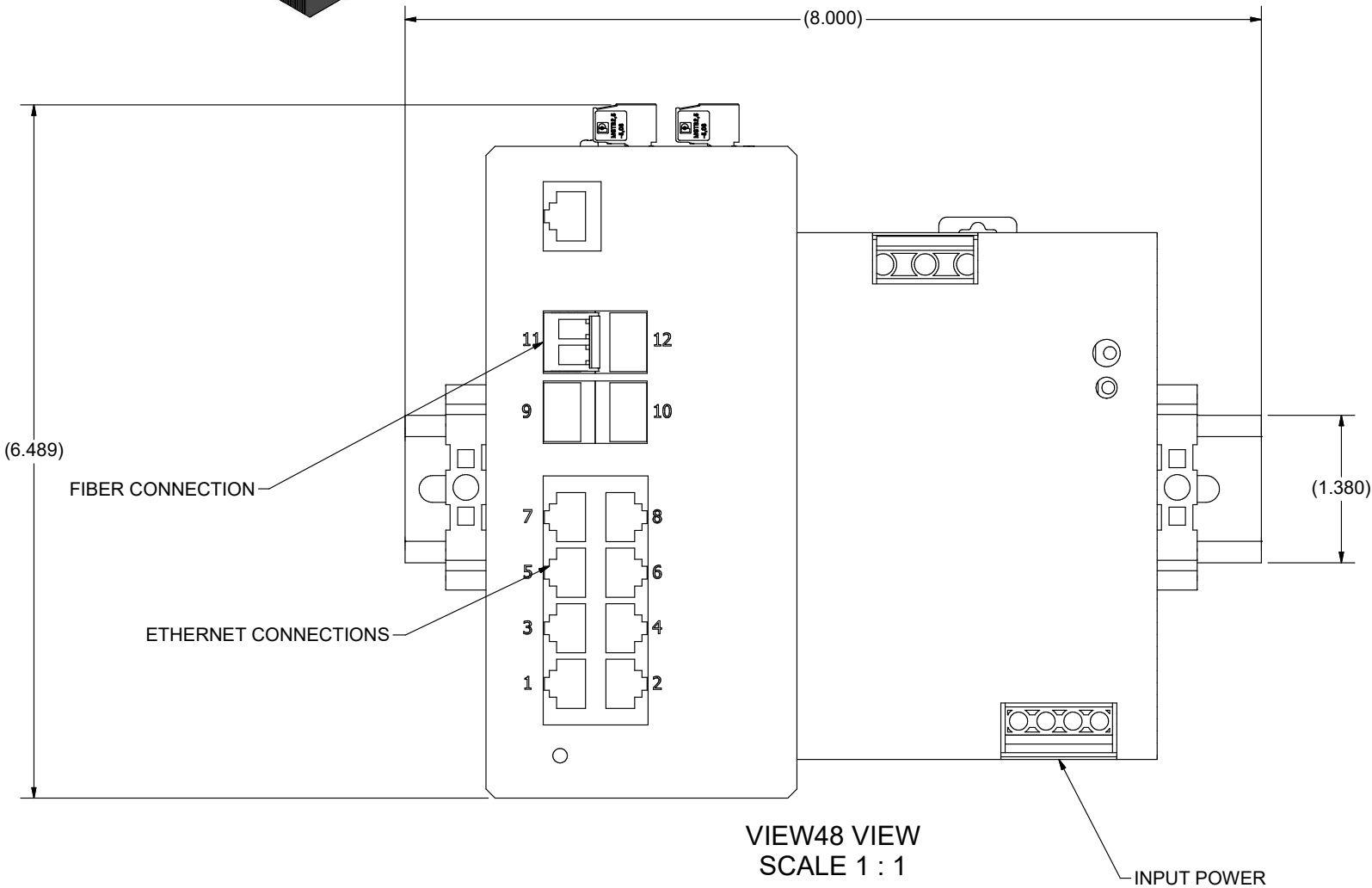
<div>NOTICE</div> <div>THIS DRAWING IS THE PROPERTY OF J.M. CANTY AND MUST BE RETURNED WITHOUT REPRODUCTION OR DUPLICATION, AT ANY TIME UPON REQUEST, BUT IN ANY EVENT AS SOON AS IT HAS SERVED THE PURPOSE FOR WHICH IT WAS FURNISHED. WHILE IN THE POSSESSION OF THE RECIPIENT, IT MUST BE PROPERLY SAFEGUARDED AGAINST DISCLOSURE TO ANYONE EXCEPT THOSE EMPLOYEES WHO REQUIRE IT FOR WORK OR JOB. THE RECIPIENT MUST KEEP CONFIDENTIAL AND REQUIRE HIS (HER) EMPLOYEES TO KEEP CONFIDENTIAL THE INFORMATION CONTAINED HERE ON.</div>	<div>IMPORTANT FOR THE REQUIRED MANUFACTURING SPECIFICATIONS SEE DOCUMENT #A4955</div> <div>NOTE: FAILURE TO RECEIVE DOCUMENT DOES NOT WAIVE VENDOR RESPONSIBILITY</div>	DRAWN BY	DATE	J.M. CANTY INC. 6100 DONNER RD. BUFFALO, N.Y. 14094 U.S.A.		<div>CANTY</div> <div>WWW.JMCANTY.COM</div>	J.M. CANTY INTL. LTD. BALLYCOOLIN BUS. PK. BLANCHARDSTOWN DUBLIN 15, IRELAND	
		APPROVAL	DATE					
		BLC	6/15/2022	TITLE				
		ENGINEERING ANALYSIS	DATE	SALES DRAWING/ GENERAL UNDERSTANDING OF CANTY CAMERA/ANALYZER CONNECTIVITY				
		CURRENT						
MFG. APPROVAL	DATE	REVISION		FILE NAME				
PENDING		3		TA11950-1024_R3				
QUALITY CONTROL	DATE	SCALE AS NOTED		SIZE	C		SHEET 3 OF 6	

SHEET 4 OF 6



SPECIFICATIONS	
P/N	SINGLEMODE MEDIA POE CONVERTERS (VC12081 SERIES)
INPUT SPECIFICATIONS	100-240VAC, 50/60 Hz

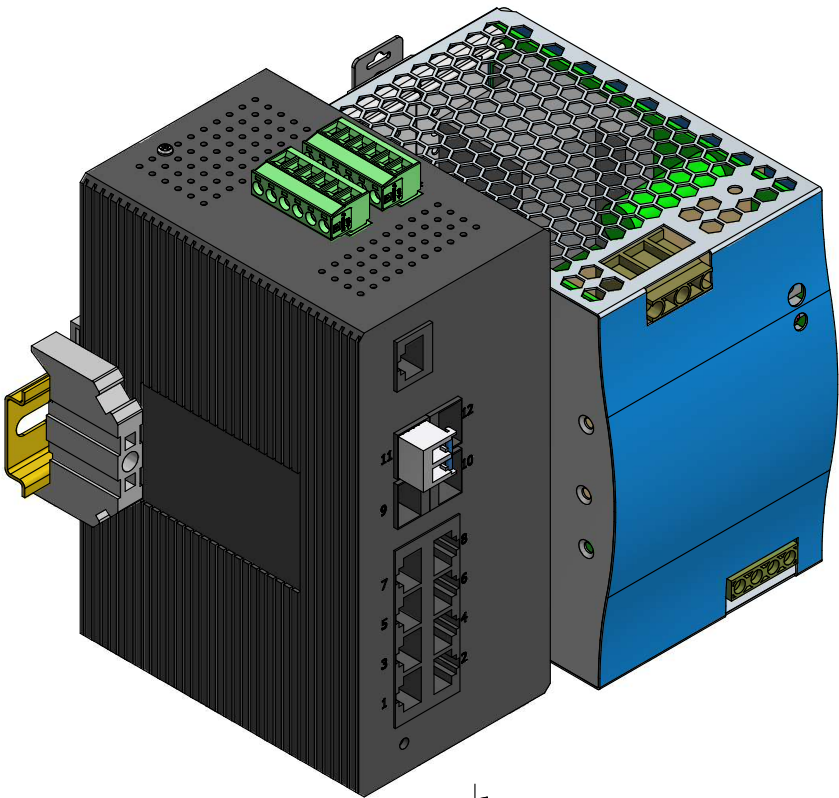
- FEATURES**
- FIBER CONVERTERS CAN RUN UP TO 6 CANTY CAMERAS
 - CUSTOMER TO SELECT ENCLOSURE FROM PAGE 1
 - MAX. RECOMMENDED FIBER CABLE DISTANCE BETWEEN CONVERTERS IS 6.2 miles. [10Km] WITH FIBER BEING LC-LC 10G SINGLEMODE DUPLEX 9/125.
 - IF CABLE DOESN'T COME IN DISTANCES REQUIRED CONSULT FACTORY
 - MAX RECOMMENDED CAT 6A CAMERA OUTPUT ETHERNET CABLE DISTANCE 328 FT. [100 m] FOR ETHERNET FROM CAM. TO CONVERTER AND CONVERTER TO COMPUTER.



- NOTES:**
- SEE SHEET 1 FOR FIBER CONVERTER HOUSING OPTIONS.
 - SHOWN DIN-RAIL COMPONENTS REFERENCE HEIGHT IS 5.75 IN [146 mm]

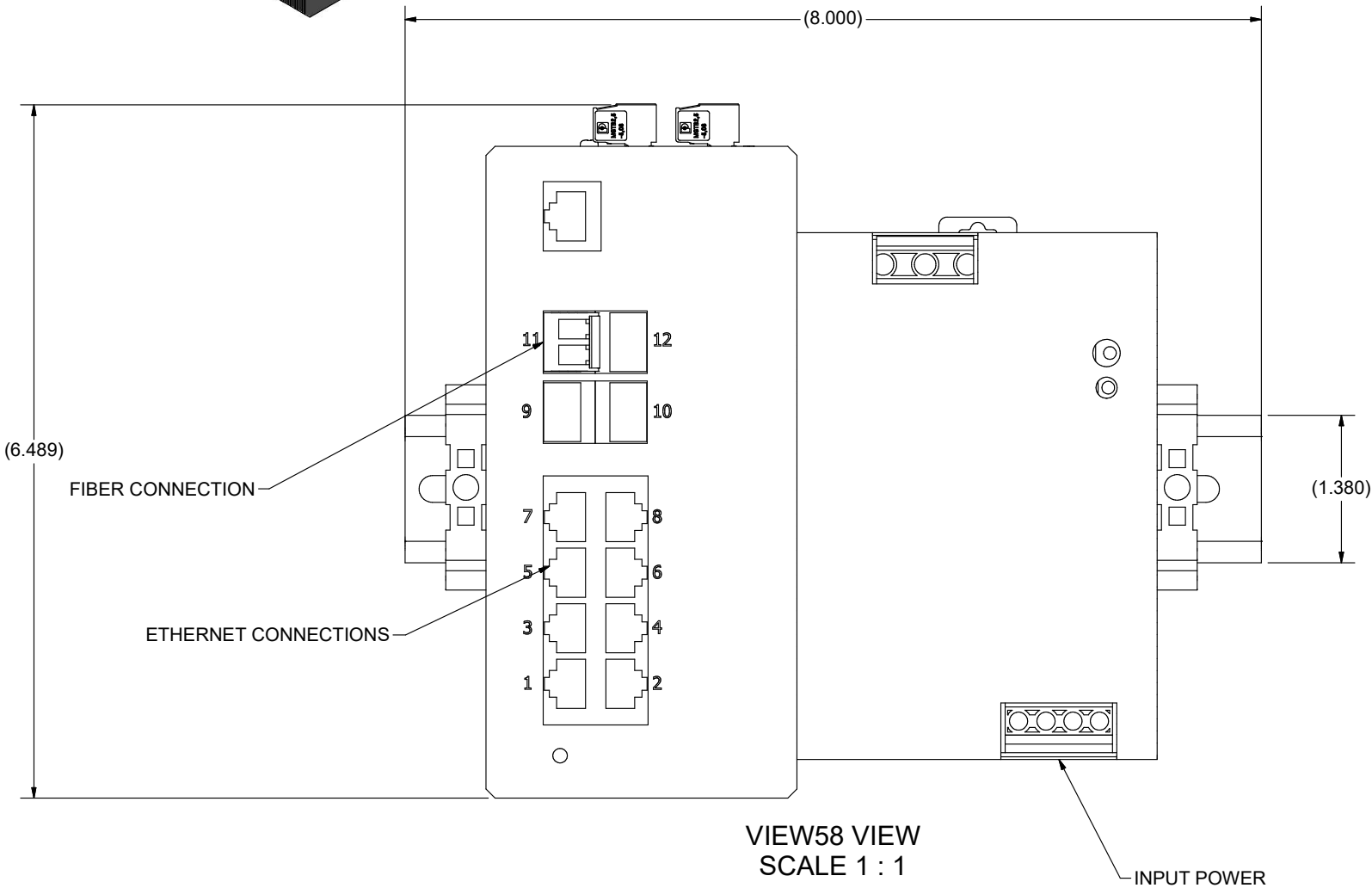
<div>NOTICE</div> <div>THIS DRAWING IS THE PROPERTY OF J.M. CANTY AND MUST BE RETURNED WITHOUT REPRODUCTION OR DUPLICATION, AT ANY TIME UPON REQUEST, BUT IN ANY EVENT AS SOON AS IT HAS SERVED THE PURPOSE FOR WHICH IT WAS FURNISHED. WHILE IN THE POSSESSION OF THE RECIPIENT, IT MUST BE PROPERLY SAFEGUARDED AGAINST DISCLOSURE TO ANYONE EXCEPT THOSE EMPLOYEES WHO REQUIRE IT FOR WORK OR JOB. THE RECIPIENT MUST KEEP CONFIDENTIAL AND REQUIRE HIS (HER) EMPLOYEES TO KEEP CONFIDENTIAL THE INFORMATION CONTAINED HERE ON.</div>	<div>IMPORTANT FOR THE REQUIRED MANUFACTURING SPECIFICATIONS SEE DOCUMENT #A4955</div> <div>NOTE: FAILURE TO RECEIVE DOCUMENT DOES NOT WAIVE VENDOR RESPONSIBILITY</div>	DRAWN BY	DATE	J.M. CANTY INC. 6100 DONNER RD. BUFFALO, N.Y. 14094 U.S.A.		<div>CANTY</div> <div>WWW.JMCANTY.COM</div>	J.M. CANTY INTL. LTD. BALLYCOOLIN BUS. PK. BLANCHARDSTOWN DUBLIN 15, IRELAND	
		APPROVAL	DATE					
		BLC	6/15/2022					
		ENGINEERING ANALYSIS	DATE	TITLE SALES DRAWING/ GENERAL UNDERSTANDING OF CANTY CAMERA/ANALYZER CONNECTIVITY				
		CURRENT						
MFG. APPROVAL	DATE	REVISION		FILE NAME				
PENDING		3		TA11950-1024_R3				
QUALITY CONTROL	DATE	SCALE AS NOTED		SIZE C		SHEET 4 OF 6		

SHEET 5 OF 6



SPECIFICATIONS	
P/N	MULTIMODE MEDIA POE CONVERTERS (VC12086 SERIES)
INPUT SPECIFICATIONS	100-240VAC, 50/60 Hz

- FEATURES**
- FIBER CONVERTERS CAN RUN UP TO 6 CANTY CAMERAS
 - CUSTOMER TO SELECT ENCLOSURE FROM PAGE 1
 - MAX. RECOMMENDED FIBER CABLE DISTANCE BETWEEN CONVERTERS IS 1317 FT. [400 m] WITH FIBER BEING LC-LC 10G MULTIMODE DUPLEX 50/125 OM4/OM5.
 - IF CABLE DOESN'T COME IN DISTANCES REQUIRED CONSULT FACTORY
 - MAX RECOMMENDED CAT 6A CAMERA OUTPUT ETHERNET CABLE DISTANCE 328 FT. [100 m] FOR ETHERNET FROM CAM. TO CONVERTER AND CONVERTER TO COMPUTER.



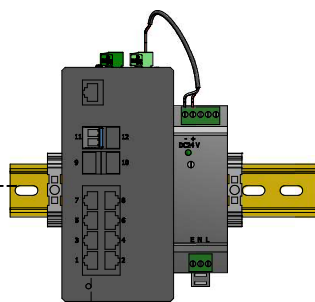
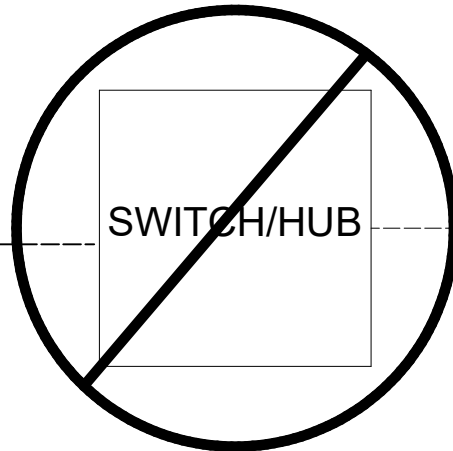
- NOTES:**
1. SEE SHEET 3 FOR FIBER CONVERTER HOUSING OPTIONS.
 2. SHOWN DIN-RAIL COMPONENTS REFERENCE HEIGHT IS 5.75 IN [146 mm]

<div>NOTICE</div> <div>THIS DRAWING IS THE PROPERTY OF J.M. CANTY AND MUST BE RETURNED WITHOUT REPRODUCTION OR DUPLICATION, AT ANY TIME UPON REQUEST, BUT IN ANY EVENT AS SOON AS IT HAS SERVED THE PURPOSE FOR WHICH IT WAS FURNISHED. WHILE IN THE POSSESSION OF THE RECIPIENT, IT MUST BE PROPERLY SAFEGUARDED AGAINST DISCLOSURE TO ANYONE EXCEPT THOSE EMPLOYEES WHO REQUIRE IT FOR WORK OR JOB. THE RECIPIENT MUST KEEP CONFIDENTIAL AND REQUIRE HIS (HER) EMPLOYEES TO KEEP CONFIDENTIAL THE INFORMATION CONTAINED HERE ON.</div>	<div>IMPORTANT FOR THE REQUIRED MANUFACTURING SPECIFICATIONS SEE DOCUMENT #A4955</div> <div>NOTE: FAILURE TO RECEIVE DOCUMENT DOES NOT WAIVE VENDOR RESPONSIBILITY</div>	DRAWN BY	DATE	J.M. CANTY INC. 6100 DONNER RD. BUFFALO, N.Y. 14094 U.S.A.		<div>CANTY</div> <div>WWW.JMCANTY.COM</div>	J.M. CANTY INTL. LTD. BALLYCOOLIN BUS. PK. BLANCHARDSTOWN DUBLIN 15, IRELAND	
		APPROVAL	DATE					
		BLC	6/15/2022					
		ENGINEERING ANALYSIS	DATE	TITLE SALES DRAWING/ GENERAL UNDERSTANDING OF CANTY CAMERA/ANALYZER CONNECTIVITY				
		CURRENT						
MFG. APPROVAL	DATE	REVISION		FILE NAME				
PENDING		3		TA11950-1024_R3				
QUALITY CONTROL	DATE	SCALE AS NOTED		SIZE C		SHEET 5 OF 6		

A horizontal number line with tick marks labeled 1 through 8 from right to left. A downward-pointing arrow is positioned above the tick mark for the number 5.

D

D



SHORT ETHERNET RUN

-UPTO 7 ETHERNET CAMERA SYSTEMS OVER 1 FIBER