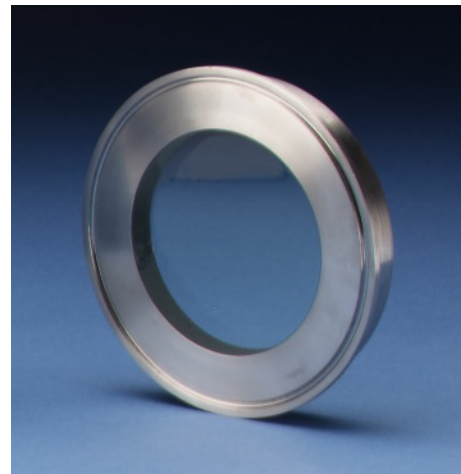
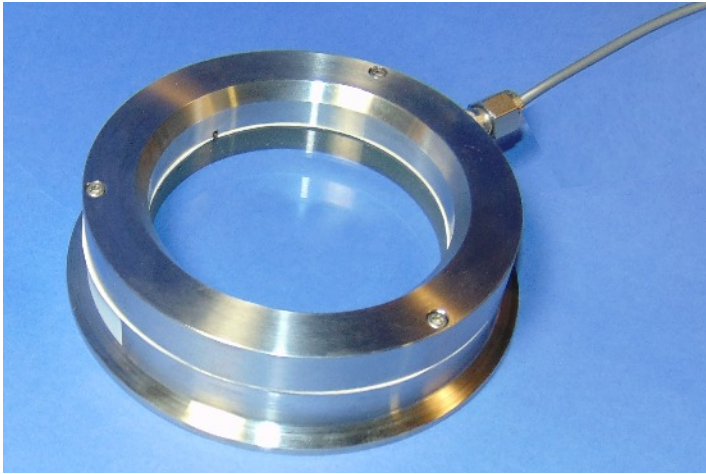


# CANTY

## PROCESS TECHNOLOGY

### FUSEVIEWCF™ CONDENSATION-FREE TRI-CLAMP® SIGHT GLASS



#### THE CANTY ADVANTAGE

J.M. Canty FuseViewCF™ sight glasses have been engineered to meet all your hygienic process and safety needs. FuseViewCF™ Tri-clamps® are a fused sight glass providing a one-piece, flush mount construction. All standard Tri-clamp® FuseViewCFs™ were designed and tested to ensure the safest product available. Canty can provide certification of material and testing if required, typical of ASME code requirements for process vessels. Canty FuseViewCF™ sight glasses are designed in strict compliance to the ASME BPE standard.

#### UNMATCHED SAFETY, RELIABLE

Canty sight glasses feature the FuseView™ window. Our unique fused glass windows far exceed all conventional tempered glass windows in safety and performance. By fusing glass to metal, a high pressure, high safety, hermetic seal is formed. What's more, our windows can easily be removed for cleaning. Canty windows do not have to be discarded, as do traditional tempered glass windows. The FuseViewCF™ features an integral heater designed to prevent and eliminate condensation. With the FuseViewCF™ you can be assured that your view will not be impeded by fog or vapor.

#### OPTIONS

- Lighting - Flex bundle light available to eliminate the need for a second nozzle.
- NA-Connect mounting options available, see datasheets TA9805-1 and TA10646-1.

#### FEATURES

- Stainless Steel, Alloy C, Hastelloy®C276 or Hastelloy® C-22® one piece construction
- Pressure rating to 150 PSI [10 bar], actual rating is dictated by clamp and ferrule selection
- Standard temperatures to 450°F [232°C]
- Typically used on fermenting vessels. Consult factory for vessel operating temperature ranges
- One piece sanitary construction
- Connects to standard Tri-clamp® connection
- Special sizes available per drawing request
- Integral heater to eliminate and prevent condensation
- Accepts 24V DC to power heating element

#### ADVANTAGES OF THE FUSEVIEWCF™

- Extremely high strength due to radial compression on the hermetically sealed glass
- Very high impact strength and thermal shock resistance due to prestressing
- Operates under positive or negative pressure
- Certification on material and pressure rating is available, typical of ASME code requirements.
- Condensation cannot form and block view

#### CANTY FUSEVIEWCF™ VS. OTHERS

- No loss of glass temper over time
- Scratches do not affect safety or life
- Unlike tempered glass, a FuseViewCF™ will not blow out if the surface is damaged
- No extra gaskets, shims, packing, or retaining rings to worry about

**CANTY**

Buffalo, NY USA  
Ph: (716) 625 4227

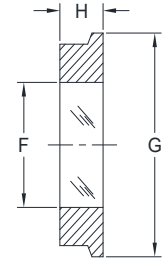
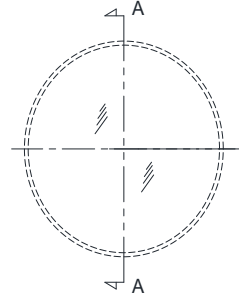
Dublin, Ireland  
Ph: + 353 (01) 882 9621

Phuket, Thailand  
Ph: + 66 (83) 968 9548

[www.jmcanty.com](http://www.jmcanty.com)

Document P/N: TA7653-2 Rev 6

# FUSEVIEWCF™ TRI-CLAMP® SPECIFICATIONS



SECTION A-A

| SIZE        | F               | G               | H             | TEMP RATING   |
|-------------|-----------------|-----------------|---------------|---------------|
| 3" / 65mm   | 2.00" [50.8mm]  | 3.58" [90.9mm]  | .68" [17.3mm] | 450°F [232°C] |
| 3.5" / 80mm | 2.50" [63.5mm]  | 4.17" [106mm]   | .68" [17.3mm] | 450°F [232°C] |
| 4" / 100mm  | 3.00" [76.2mm]  | 4.69" [119.1mm] | .68" [17.3mm] | 450°F [232°C] |
| 6"          | 4.00" [101.6mm] | 6.57" [166.9mm] | .68" [17.3mm] | 450°F [232°C] |
| 8"          | 5.70" [144.8mm] | 8.57" [217.7mm] | .68" [17.3mm] | 450°F [232°C] |

\*Dimensions listed are for a standard sight glass. Adding the heater will result in changes to dimension "H". Consult factory for more information.

## Ordering Information

HOW TO ORDER: Select the appropriate options and build a part number as shown:

### EXAMPLE:

**S A 2 A0**

MODEL: \_\_\_\_\_  
 4 = FuseViewCF™ Tri-Clamp®  
 A = Flex Mount Tri With Tapped Holes and Brackets  
 B = Flex Mount Tri With Tapped Holes

SIZE: \_\_\_\_\_  
 B = 3" / 65mm  
 F = 3.5" / 80mm  
 C = 4" / 100mm  
 D = 6"  
 E = 8"

HEATING ELEMENT INPUT VOLTAGE:  
 9 = 24 V DC  
 \*Note - for additional options consult factory

FINISH: (wetted) (non-wetted = 32 µin [.81 µm] Ra)  
 0 = 20 µin [.51 µm] Ra (standard)(BPE-SF1)  
 C = 15 µin [.38 µm] Ra  
 L = 20 µin [.51 µm] Ra Electropolished (BPE-SF5)  
 M = 15 µin [.38 µm] Ra Electropolished (BPE-SF4)

MATERIAL: (wetted)  
 B = 316L Stainless Steel\*  
 C = Alloy C  
 D = Hastelloy® C276 or equal  
 E = Hastelloy® C-22® or equal

\*Canty reserves the right to upgrade to Hastelloy® C-family of alloys or equal at their own cost.

All registered trademarks are the property of their respective owners.

**CANTY**

Buffalo, NY USA  
 Ph: (716) 625 4227

Dublin, Ireland  
 Ph: + 353 (01) 882 9621

Phuket, Thailand  
 Ph: + 66 (83) 968 9548

[www.jmcanty.com](http://www.jmcanty.com)

Document P/N: TA7653-2 Rev 6