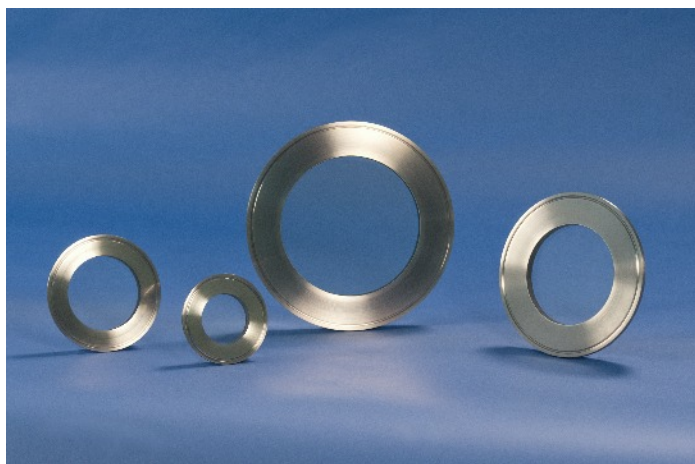


CANTY

PROCESS TECHNOLOGY

FUSEVIEW™ BoroHT TRI-CLAMP® SIGHT GLASS



THE CANTY ADVANTAGE

J.M. Canty Fuseview™ BoroHT Tri-Clamp® sight glasses have been engineered to meet all your hygienic process and safety needs. Fuseview™ BoroHT Tri-Clamp® sight glasses **are a fused sight glass providing a one-piece, flush mount construction and are the best borosilicate sight glasses available.** All standard Fuseview™ BoroHT Tri-Clamp® sight glasses were designed and tested to ensure the safest product available. Canty can provide certification of material and testing if required, typical of ASME/PED code requirements for process vessels. Canty Fuseview™ BoroHT Tri-Clamp® sight glasses are designed in strict compliance to the ASME BPE standard.

UNMATCHED SAFETY, RELIABLE

All Canty sight glasses feature the BoroHT Fuseview™ window. Our unique fused glass windows far exceed all conventional tempered glass windows and press fit windows in safety and performance. By fusing glass to metal, a high pressure, high safety, hermetic seal is formed. The fused glass Technology ensures safety with every BoroHT Fuseview™. What's more, our windows can easily be removed for cleaning. Canty windows do not have to be discarded, as do traditional tempered glass windows. Canty fused glass windows can be re-used again and again.

OPTIONS

- Lighting - Flex bundle light available to eliminate the need for a second nozzle.
- Jet spray ring - integral or two piece spray ring available for cleaning glass, see TA11500-1020.
- NA-Connect mounting options available, see datasheets TA9805-2 and TA10646-1.

USP and ASME BPE (BIOPROCESSING EQUIPMENT STANDARD)

The Fuseview™ BoroHT Tri-Clamp® sight glasses use the CANTY BoroHT glass. The glass formulation is a special borosilicate glass that conforms within the limits for USP Type 1 Powdered Glass; USP Arsenic, EP Type 1 Glass Grain (Test B) and EP Arsenic as specified in US Pharmacopeia and European Pharmacopeia. In addition, it passed testing procedures of CIP100 and CIP200 cleaning and SIP cleaning tests at 130°C. **BoroHT fused glass is fully compliant with current ASME BPE standards and is a proprietary formulation that fuses to Alloy C, Hastelloy® C276, Hastelloy® C-22® or equal.**

ADVANTAGES OF THE FUSEVIEW™ HT

- **BoroHT formula is guaranteed not to crack.**
- **Guaranteed fusion of glass to metal.**
- **Over 8% boron in the glass.**
- Extremely high strength due to radial compression on the hermetically sealed glass.
- Very high impact strength and thermal shock resistance due to prestressing.
- Operates under positive or negative pressure.
- Scratches do not affect safety or life.

FEATURES

- Stainless Steel, Alloy C, Hastelloy® C276 or equal, or Hastelloy® C-22® or equal construction
- Pressure rating to 150 PSI [10 bar], actual rating is dictated by clamp and ferrule selection
- Standard temperatures to 450°F [232°C]
- Thermal shock testing exceeds 266°F [130°C]
- One piece sanitary construction
- Connects to standard Tri-clamp® connection

CANTY

JM Canty Inc
JM Canty Intl Ltd

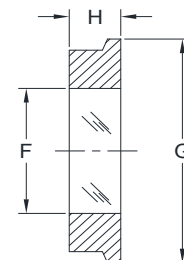
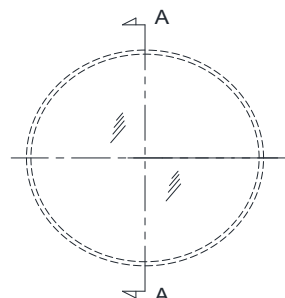
Buffalo, NY USA
Dublin, Ireland

Ph: (716) 625 4227
Ph: + 353 (01) 882 9621

Fax: (716) 625 4228
Fax: +353 (01) 882 9622

FUSEVIEW™ BOROHT TRI-CLAMP® SIGHT GLASS SPECIFICATIONS

| SIZE | F | G | H | TEMP RATING |
|------------------|-----------------|-----------------|---------------|---------------|
| 1" / 1.5" / 40mm | .94" [23.9mm] | 1.98" [50.3mm] | .68" [17.3mm] | 450°F [232°C] |
| 2" / 50mm | 1.18" [30mm] | 2.52" [64mm] | .68" [17.3mm] | 450°F [232°C] |
| 2.5" | 1.50" [38.1mm] | 3.05" [77.5mm] | .68" [17.3mm] | 450°F [232°C] |
| 3" / 65mm | 2.00" [50.8mm] | 3.58" [90.9mm] | .68" [17.3mm] | 450°F [232°C] |
| 3.5" / 80mm | 2.50" [63.5mm] | 4.17" [106mm] | .68" [17.3mm] | 450°F [232°C] |
| 4" / 100mm | 3.00" [76.2mm] | 4.69" [119.1mm] | .68" [17.3mm] | 450°F [232°C] |
| 6" | 4.00" [101.6mm] | 6.57" [166.9mm] | .68" [17.3mm] | 450°F [232°C] |
| 8" | 5.70" [144.8mm] | 8.57" [217.7mm] | .68" [17.3mm] | 450°F [232°C] |



SECTION A-A

Ordering Information

HOW TO ORDER: Select the appropriate options and build a part number as shown:

EXAMPLE:

S _ A _ 2 _ 0A0

MODEL: _____
 4 = BoroHT Fuseview™ Tri-Clamp®
 A = Flex Mount Tri With Tapped Holes and Brackets
 B = Flex Mount Tri With Tapped Holes

SIZE: _____
 8 = 1" / 1.5" / 40mm
 9 = 2" / 50mm
 A = 2.5"
 B = 3" / 65mm
 F = 3.5" / 80mm
 C = 4" / 100mm
 D = 6"
 E = 8"

FINISH: (wetted) (non-wetted = 32 µin [.81 µm] Ra)
 0 = 20 µin [.51 µm] Ra (standard) (BPE-SF1)
 C = 15 µin [.38 µm] Ra
 L = 20 µin [.51 µm] Ra Electropolished (BPE-SF5)
 M = 15 µin [.38 µm] Ra Electropolished (BPE-SF4)

GLASS MATERIAL
 2 - BoroHT Glass (over 8% boron)

MATERIAL: (wetted)
 B = 316L Stainless Steel*
 C = Alloy C
 D = Hastelloy® C276 or equal
 E = Hastelloy® C-22® or equal

* Cauty reserves the right to upgrade to Hastelloy® C-family of alloys or equal at their own cost.

All registered trademarks are the property of their respective owners.

CANTY

JM Cauty Inc | Buffalo, NY USA
 JM Cauty Intl Ltd | Dublin, Ireland

Ph: (716) 625 4227
 Ph: + 353 (01) 882 9621

Fax: (716) 625 4228
 Fax: +353 (01) 882 9622

www.jmcauty.com

Document P/N: TA7653-3 Rev. 1