

CANTY

5+ YEAR LIFE
HIGH INTENSITY
UNIFORM WHITE LIGHT
OUTPUT, MAINTENANCE-
FREE!

PROCESS TECHNOLOGY

PUREVIEWCF™ SANITARY SIGHT GLASS / LED LIGHTING SYSTEM WITH CONDENSATION-FREE SIGHT GLASS



COLD LIGHT - LED

Canty LED fiber optic lighting systems have been designed to provide efficient, high output, cool light in a maintenance-free package. Conventional methods of lighting through a sightglass are ineffective since a majority of the light is reflected off of the sightglass. Canty uses only high quality fiber optic light pipes to fiber-optically guide the light from our light source through a sightglass or process connection. The LED light is focused and transmitted into the fiber optic light pipe and guided through the sightglass, minimizing losses while maximizing your tank or vessel lighting! The PureViewCF™ heated sight glass prevents and eliminates condensation and vapor from accumulating and impeding view.

ADVANTAGES OF THE PUREVIEWCF™

- Various worldwide approvals
- Extremely high strength due to radial compression on the hermetically sealed glass
- Very high impact strength and thermal shock resistance due to pre-stressing
- Operates under positive & negative pressure
- Certification on material and pressure rating is available, typical of ASME code

APPLICATIONS

- Sterile Process Vessels
- Aseptic Tanks
- Sanitary Areas
- Portable Tanks
- Reactors, Fermentors, Sterilizers
- Freeze Dryers
- Many, many more

FEATURES

- LED is maintenance-free, no bulb changes.
- High intensity, uniform white light
- Many models are FM, CSA approved!
- Flexible fiber optic light bundle provides a high intensity output
- NEMA 4, IP66
- One piece sanitary construction
- Connects to standard Tri-clamp® connection
- Special sizes available upon request
- Cool Light Output; There is No Product Bake On.
- ASME BPE / FDA / USP Compliant
- PureViewCF™ heated sight glass guarantees clear view free of condensation or fog

UNMATCHED SAFETY & RELIABILITY

All Canty sight glasses feature the Fuseview™ window. Our unique fused glass windows far exceed all conventional tempered glass windows in safety and performance. By fusing glass to metal, a high pressure, high safety, hermetic seal is formed. The fused glass technology ensures safety with every Fuseview™. What's more, our windows can easily be removed for cleaning. Canty windows do not have to be discarded as do traditional tempered glass windows. Canty fused glass windows can be re-used again and again. The added heater feature of the PureViewCF™ prevents condensation from forming on the glass, allowing for a clear view at all times.

SPECIFICATIONS

Fiber Optic Bundle

Construction:	Multi-Fiber Glass Bundle
Exterior:	Crush Resistant Outer Tubing
Termination:	Stainless Steel, .75" diameter
Lengths:	6", 24", 36", 48", 60", 72", 96", 120", 144" lengths are available. Consult factory for more options.

CANTY

Buffalo, NY USA
Ph: (716) 625 4227

Dublin, Ireland
Ph: + 353 (01) 882 9621

Phuket, Thailand
Ph: + 66 (83) 968 9548

Ordering Information

HOW TO ORDER: Select the appropriate symbols and build a part number as shown.
Recommended model options are shown in bold.

EXAMPLE:

PVS226B-H3-LED

**PureViewCF™ Light/Fuseview™
Sight Glass System**

Light Specifications

120V / 230V Models:

- E - 80W, 120V AC input direct to Nickel plated Aluminum light. WP rating, .25A
- F - 80W, 230V AC input direct to Nickel plated Aluminum light. IP rating, .25A
- S - 50W, 120V AC input HYLEd 52 series 316L S.S. light with integral momentary switch. WP rating, .25A
- T - 50W, 120V AC input HYLEd 52 series 316L S.S. light with with 42" momentary switch. WP rating, .25A
- V - 50W, 230V AC input HYLEd 52 series 316L S.S. light with integral momentary switch. WP rating, .25A
- 2 - 50W, 120V AC input HYLEd 52 series 316L S.S. Light with S.S. 316L remote switch, integral momentary, WP rating, .25A
- 3 - 50W, 230V AC input HYLEd 52 series 316L S.S. Light with S.S. 316L remote switch, integral momentary, IP rating, .25A

24V Models:

- Y - 50W, 24V DC input HYLEd 52 series 316L S.S. light with integral momentary switch. WP rating, 1A
- 4 - 50W, 24V DC input HYLEd 52 series 316L S.S. light with S.S. 316L remote switch, integral momentary, WP/IP rating, 1A
- 5 - 50W, 24V DC input HYLEd 52 series 316L S.S. light with 42" momentary switch. WP rating, 1A, no timer

WP = Weather Proof
 IP = Ingress Protection

Heating Element Input Voltage

3 - 24 V DC
 *Note: consult factory for additional voltage options.

Wetted Material for Fuseview™ Sightglass

- B - 316L Stainless Steel**
 - C - Hastelloy® or equal
 - D - Hastelloy® C-276 or equal
 - E - Hastelloy® C-22® or equal
 - U - Hastelloy® C-276 or equal with 20 µin Ra electropolished wetted surface finish
 - V - Hastelloy® C-276 or equal with 15 µin Ra electropolished wetted surface finish
- *Consult factory for other surface finish options.

Connection Size

- 5 - 3 inch
- 6 - 4 inch
- 7 - 6 inch
- 8 - 8 inch

Fuseview™ Sightglass Specification

- 2 - Flush Tri-Clamp® Model
- 4 - NA-Connect® model

Fiber Optic Bundle Option

Direct Mount

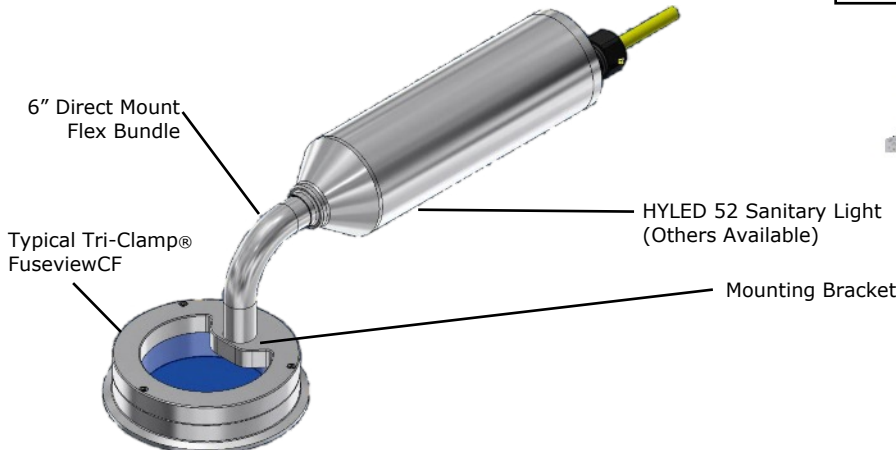
- 2 - Light is factory mounted to sight glass with either a 6" (HYL52 series) or 12" (HYL80 series) rigid bundle.

Remote Mount

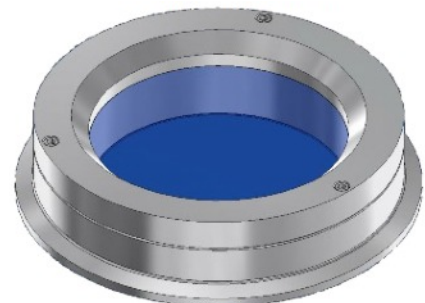
- A - 24 inch Flex Bundle
- B - 36 inch Flex Bundle
- C - 48 inch Flex Bundle
- D - 60 inch Flex Bundle
- E - 72 inch Flex Bundle
- G - 96 inch Flex Bundle
- J - 120 inch Flex Bundle
- K - 144 inch Flex Bundle

Notes:

- **All models include required mounting brackets.
- **Canty reserves the right to upgrade to Hastelloy® C-family of alloys or equal at their own cost.



Fuseview™ with heater



CANTY

Buffalo, NY USA
 Ph: (716) 625 4227

Dublin, Ireland
 Ph: + 353 (01) 882 9621

Phuket, Thailand
 Ph: + 66 (83) 968 9548

All registered trademarks are the property of their respective owners.