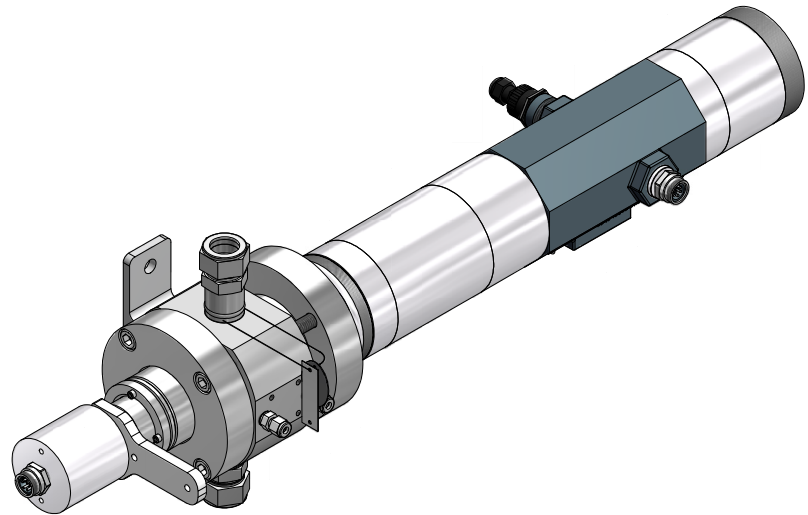
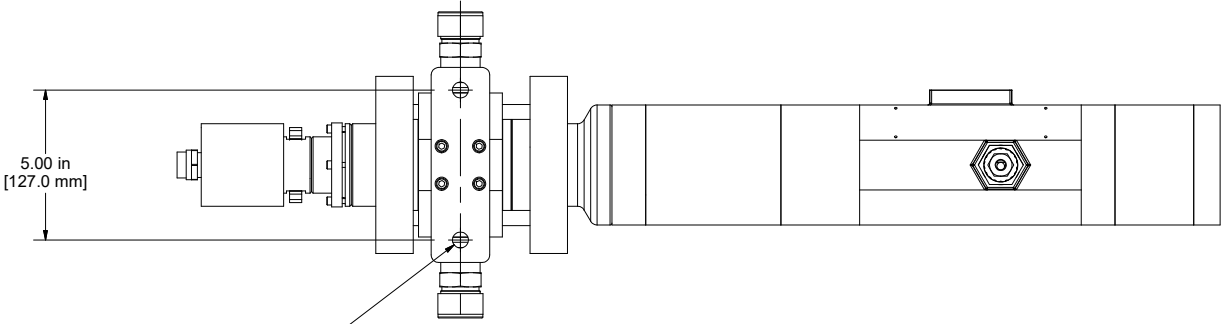


- NOTES:**
1. TOP LEVEL P/N: VD4912-788, VD4912-778
 2. ALL WIRING & CONNECTORS SUPPLIED BY CUSTOMER AND MUST BE COMPLETED IN ACCORDANCE WITH APPLICABLE REGULATIONS.
 3. SYSTEM INCLUDES CANTYVISION SOFTWARE.
 4. POWER SUPPLY REQUIRES: 120V AC, 60 Hz, 30A SOURCE.
 5. SEE ADDITIONAL SHEETS FOR DIMENSIONAL INFORMATION ON AUXILIARY EQUIPMENT.

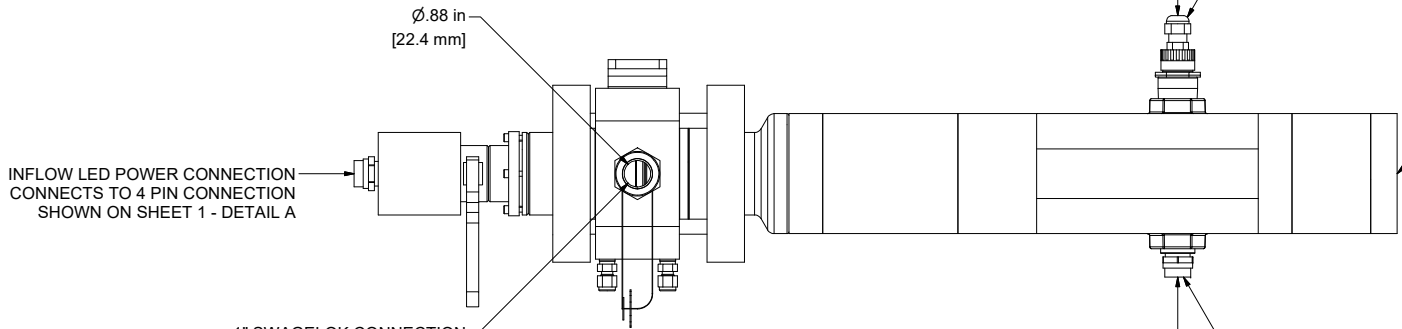
<div>NOTICE</div> <div>THIS DRAWING IS THE PROPERTY OF J.M. CANTY AND MUST BE RETURNED WITHOUT REPRODUCTION OR DUPLICATION, AT ANY TIME UPON REQUEST, BUT IN ANY EVENT AS SOON AS IT HAS SERVED THE PURPOSE FOR WHICH IT WAS FURNISHED. WHILE IN THE POSSESSION OF THE RECIPIENT IT MUST BE PROPERLY SAFEGUARDED AGAINST DISCLOSURE TO ANYONE EXCEPT THOSE EMPLOYEES WHO REQUIRE IT FOR WORK OR JOB. THE RECIPIENT MUST KEEP CONFIDENTIAL AND REQUIRE HIS (HER) EMPLOYEES TO KEEP CONFIDENTIAL THE INFORMATION CONTAINED HERE ON.</div>	<div>IMPORTANT</div> <div>FOR THE REQUIRED MANUFACTURING SPECIFICATIONS SEE DOCUMENT #A4955</div> <div>NOTE: FAILURE TO RECEIVE DOCUMENT DOES NOT WAIVE VENDOR RESPONSIBILITY</div>	DRAWN BY	DATE	J.M. CANTY INC. 6100 DONNER RD. BUFFALO, N.Y. 14094 U.S.A.		<div>CANTY</div> <div>WWW.JMCANTY.COM</div>	J.M. CANTY INTL. LTD. BALLYCOOLIN BUS. PK. BLANCHARDSTOWN DUBLIN 15, IRELAND	
		DEJ	15-Sep-16					
		APPROVAL	DATE					
		DEJ	15-Sep-16					
		ENGINEERING ANALYSIS	DATE					
		CURRENT						
MFG. APPROVAL	DATE							
PENDING								
QUALITY CONTROL	DATE							
VJS								
		TITLE		APP. DWG., CANTY P/N VD4912-778 & VD4912-788,				
		REVISION		FILE NAME				
		0		VD11906-1010				
		SCALE AS NOTED		SIZE D			SHEET 1 OF 2	



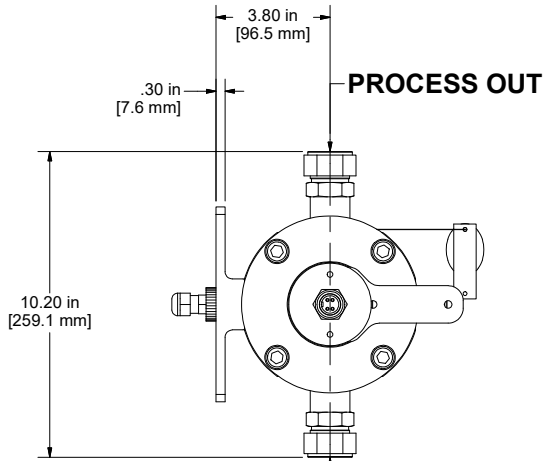
ISOMETRIC VIEW
SCALE .3125 : 1



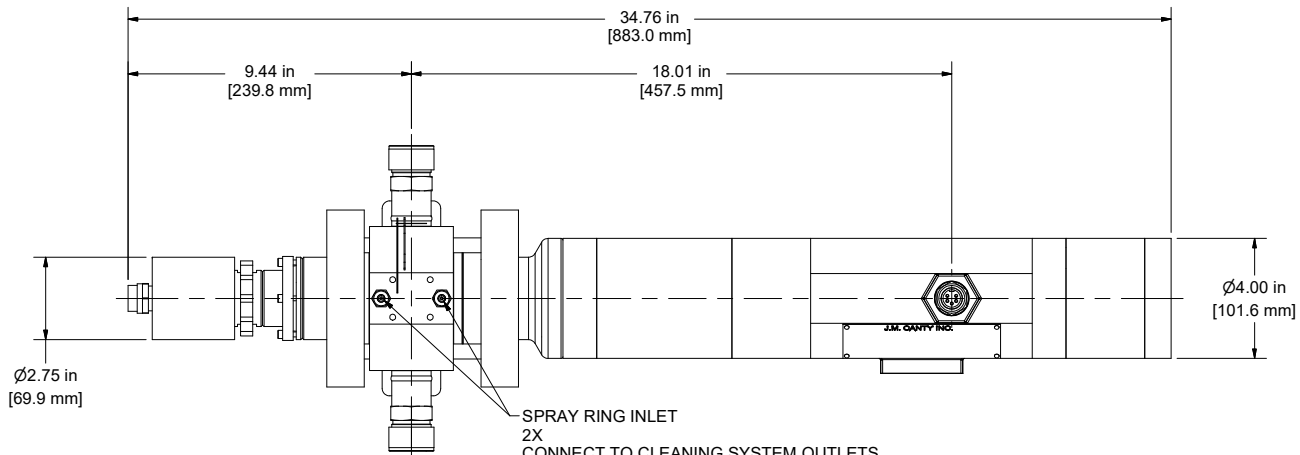
BACK VIEW
SCALE .3125 : 1



TOP VIEW
SCALE .3125 : 1



LEFT VIEW
SCALE .3125 : 1



FRONT VIEW
SCALE .3125 : 1

NOTES:

1. UNIT HYDROTESTED TO 225 PSI [16 BAR] AT AMBIENT TEMPERATURE. UNIT RATED TO 150 PSI [10 BAR] @ 200°F [93°C].
2. INFLOW IS RATED FOR NEMA4 / IP66
3. APPROXIMATE SYSTEM WEIGHT OF EQUIPMENT IN THE PROCESS LINE: 60 LB. [28 KG.].
4. DIRECTION OF FLOW THROUGH INFLOW ANALYSER FLOW CELL SHOULD BE AS SHOWN TO ENSURE FLOW CELL CAVITY IS FULL DURING PROCESS FLOW, ENABLING ACCURATE MEASUREMENT TO TAKE PLACE
5. ALL DIMENSIONS LISTED ARE THEORETICAL AND MAY VARY SLIGHTLY DUE TO MANUFACTURING TOLERANCES AND ASSEMBLY POSITION OF ADJUSTABLE PARTS.

NOTICE
THIS DRAWING IS THE PROPERTY OF J.M. CANTY AND MUST BE RETURNED WITHOUT REPRODUCTION OR DUPLICATION, AT ANY TIME UPON REQUEST, BUT IN ANY EVENT AS SOON AS IT HAS SERVED THE PURPOSE FOR WHICH IT WAS FURNISHED. WHILE IN THE POSSESSION OF THE RECIPIENT, IT MUST BE PROPERLY SAFEGUARDED AGAINST DISCLOSURE TO ANYONE EXCEPT THOSE EMPLOYEES WHO REQUIRE IT FOR WORK OR JOB. THE RECIPIENT MUST KEEP CONFIDENTIAL AND REQUIRE HIS (HER) EMPLOYEES TO KEEP CONFIDENTIAL THE INFORMATION CONTAINED HERE ON.

IMPORTANT
FOR THE REQUIRED MANUFACTURING SPECIFICATIONS SEE DOCUMENT #A4955

NOTE: FAILURE TO RECEIVE DOCUMENT DOES NOT WAIVE VENDOR RESPONSIBILITY

DRAWN BY DEJ	DATE 15-Sep-16
APPROVAL DEJ	DATE 15-Sep-16
ENGINEERING ANALYSIS CURRENT	DATE
MFG. APPROVAL PENDING	DATE
QUALITY CONTROL VJS	DATE

J.M. CANTY INC. 6100 DONNER RD. BUFFALO, N.Y. 14094 U.S.A.		CANTY WWW.JMCANTY.COM		J.M. CANTY INTL. LTD. BALLYCOOLIN BUS. PK. BLANCHARDSTOWN DUBLIN 15, IRELAND	
TITLE					
APP. DWG., CANTY P/N VD4912-778 & VD4912-788,					
REVISION 0		FILE NAME VD11906-1010			
SCALE AS NOTED		SIZE D		SHEET 2 OF 2	