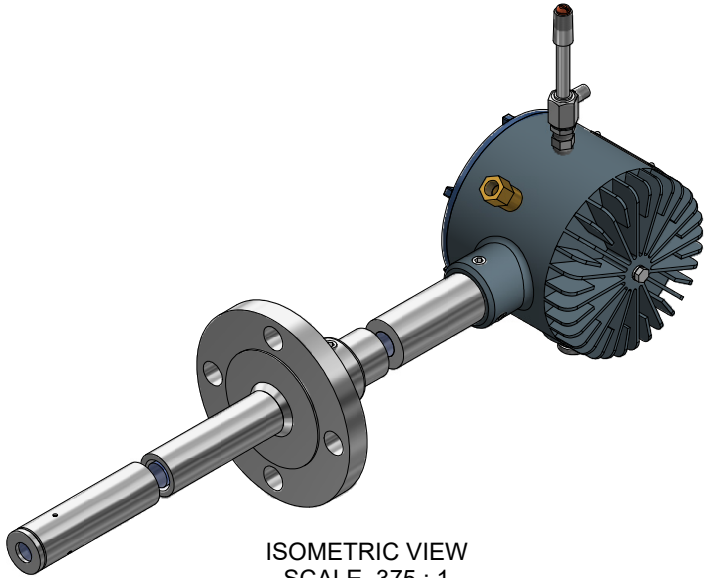
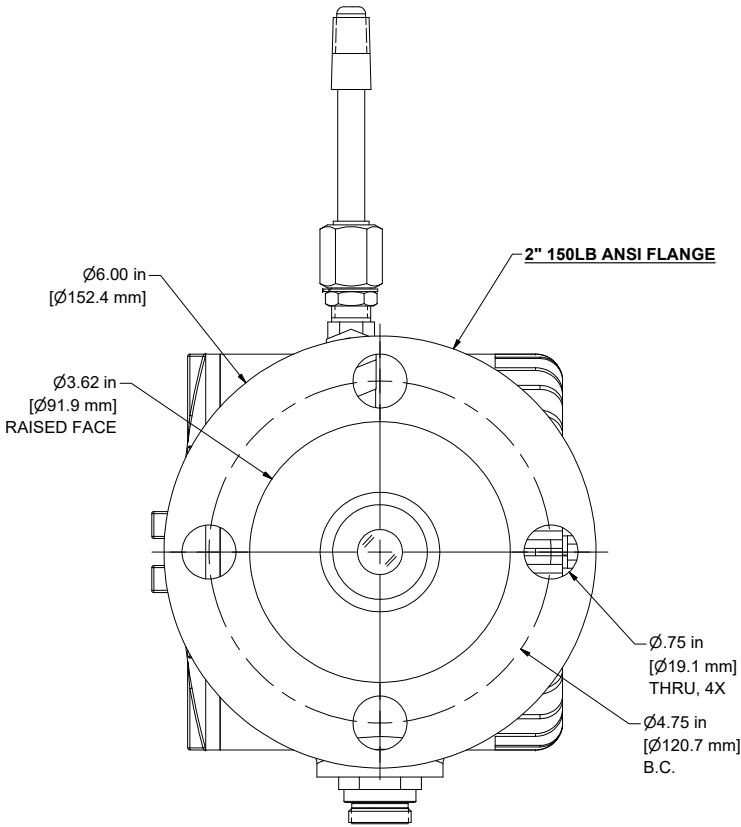


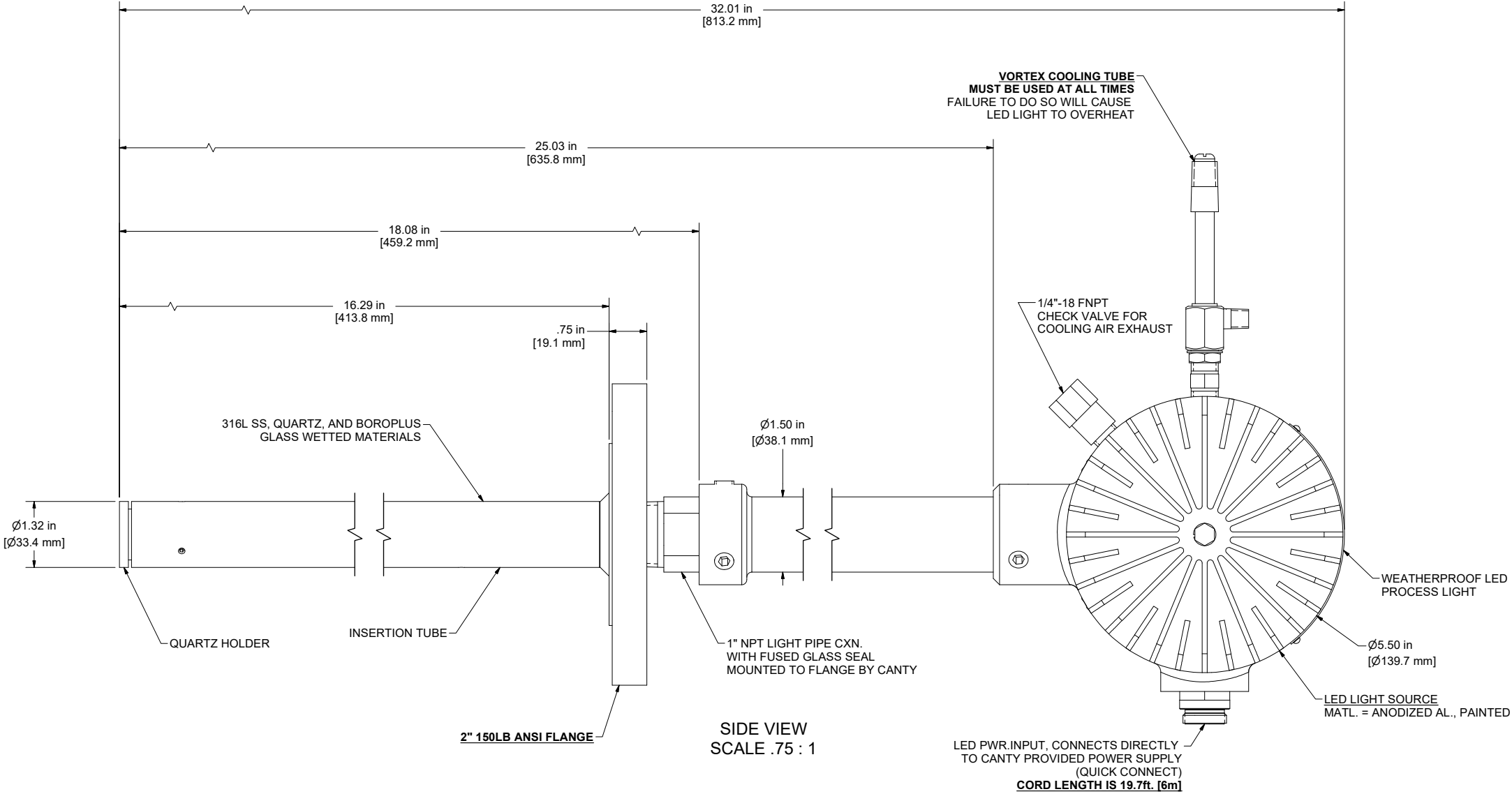
HTL-EMS83SG-LED



ISOMETRIC VIEW
SCALE .375 : 1



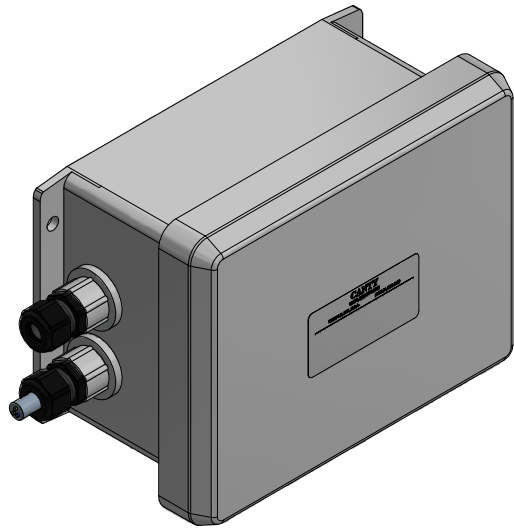
FRONT VIEW
SCALE .75 : 1



SIDE VIEW
SCALE .75 : 1

- NOTES:
1. REFERENCE TOP LEVEL P/N: HTL-EMS83SG-LED.
 2. APPROXIMATE WEIGHT: 34 LB. [15.4 KG.]
 3. DIMMER FOR LED IS INCLUDED WITH TOP LEVEL PART NUMBER. SEE SHEET 2 FOR DETAILS.
 4. SEE SHEET 3 FOR INPUT AIR SPEC'S FOR VORTEX COOLING TUBE.

<div>NOTICE</div> <div>THIS DRAWING IS THE PROPERTY OF J.M. CANTY AND MUST BE RETURNED WITHOUT REPRODUCTION OR DUPLICATION, AT ANY TIME UPON REQUEST, BUT IN ANY EVENT AS SOON AS IT HAS SERVED THE PURPOSE FOR WHICH IT WAS FURNISHED. WHILE IN THE POSSESSION OF THE RECIPIENT, IT MUST BE PROPERLY SAFEGUARDED AGAINST DISCLOSURE TO ANYONE EXCEPT THOSE EMPLOYEES WHO REQUIRE IT FOR WORK OR JOB. THE RECIPIENT MUST KEEP CONFIDENTIAL AND REQUIRE HIS (HER) EMPLOYEES TO KEEP CONFIDENTIAL THE INFORMATION CONTAINED HERE ON.</div>	<div>IMPORTANT</div> <div>FOR THE REQUIRED MANUFACTURING SPECIFICATIONS SEE DOCUMENT #A4955</div> <div>NOTE: FAILURE TO RECEIVE DOCUMENT DOES NOT WAIVE VENDOR RESPONSIBILITY</div>	DRAWN BY	DATE	J.M. CANTY INC. 6100 DONNER RD. BUFFALO, N.Y. 14094 U.S.A.		<div>CANTY</div> <div>WWW.JMCANTY.COM</div>	J.M. CANTY INTL. LTD. BALLYCOOLIN BUS. PK. BLANCHARDSTOWN DUBLIN 15, IRELAND		
		DEJ	04-Sep-25						
		APPROVAL	DATE						
		DEJ	04-Sep-25						
		ENGINEERING ANALYSIS	DATE						
		CURRENT							
MFG. APPROVAL	DATE								
PENDING									
QUALITY CONTROL	DATE								
V.J.S.									
		TITLE		SPEC. DWG., CANTY P/N: HTL-EMS83SG-LED / H.T. LIGHTING SYS.-WP-SS-2"FL150S-16.00"INS, W/7"EXT, W/ DIMMER					
		REVISION		FILE NAME					
		0		VD11919-1351					
		SCALE		AS NOTED		SIZE		D	
								SHEET 1 OF 3	



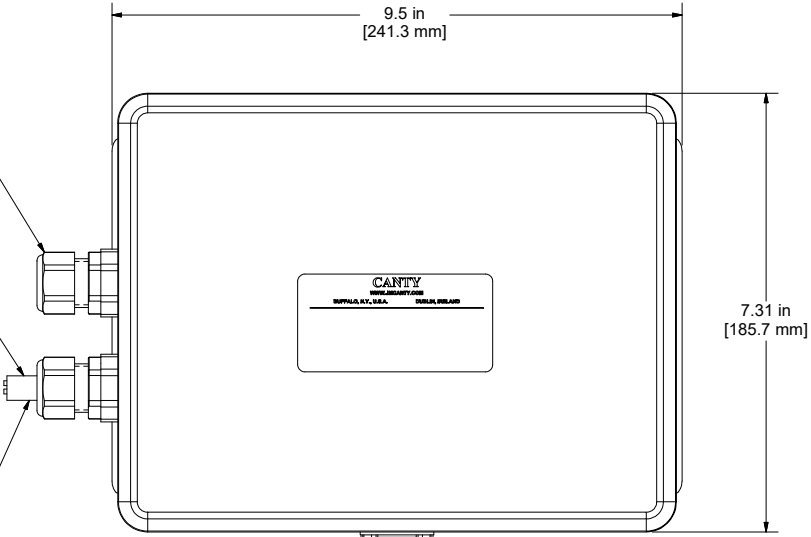
ISOMETRIC VIEW
SCALE .5 : 1

WIRE INPUT FROM LED
SEE DETAIL A FOR WIRING DETAILS

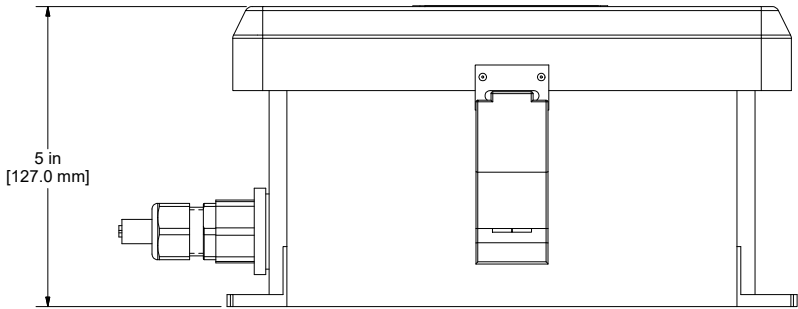
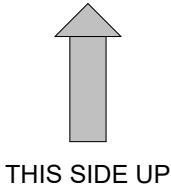
7 FT. [2m], 3 CONDUCTOR
INPUT CABLE

CUSTOMER POWER INPUT REQUIREMENT:
100-240VAC, 50/60 Hz, 30 WATT
SINGLE PHASE, FUSED

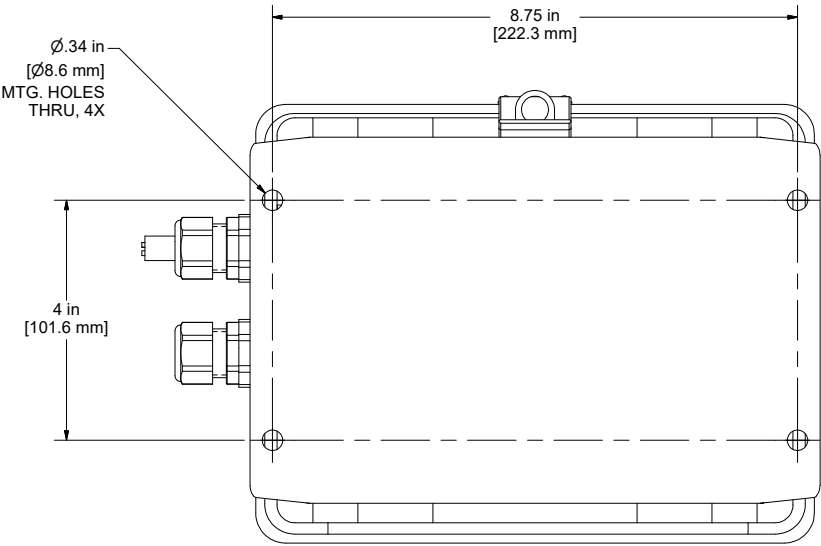
WIRING DETAIL	
WIRE COLOR	FUNCTION
BROWN	LIVE INPUT
BLUE	NEUTRAL INPUT
GREEN/YL	EARTH INPUT



TOP VIEW
SCALE .625 : 1



FRONT VIEW
SCALE .625 : 1

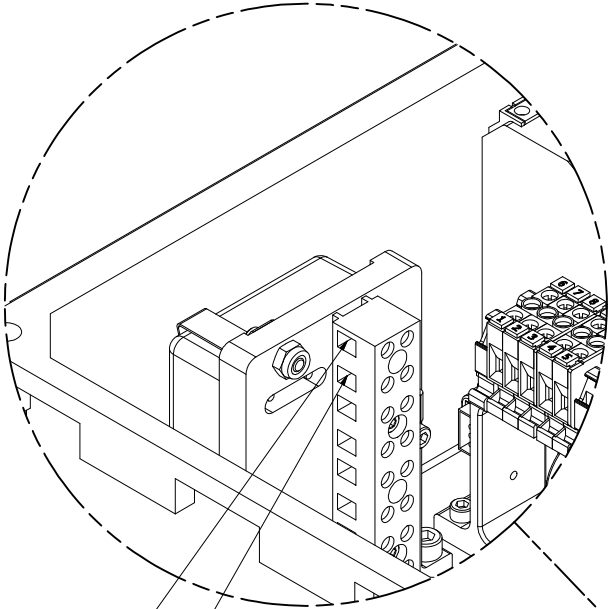


BOTTOM VIEW
SCALE .625 : 1

- NOTES:**
- ENCLOSURE MUST BE MOUNTED ON A PROPERLY SUPPORTED VERTICAL STRUCTURE IN THE ORIENTATION SHOWN.
 - APPROXIMATE WEIGHT: 5.5 LBS. [2.5 KGS].
 - ENCLOSURE DIMENSIONS AND ELECTRONIC COMPONENTS MAY VARY SLIGHTLY FROM WHAT IS SHOWN DUE TO MANUFACTURING IMPROVEMENTS. SYSTEM WILL STILL MAINTAIN THE SAME FORM AND FUNCTION AS INTENDED. SPECIFICATIONS SHOWN ARE CURRENT AT TIME OF DRAWING CREATION.

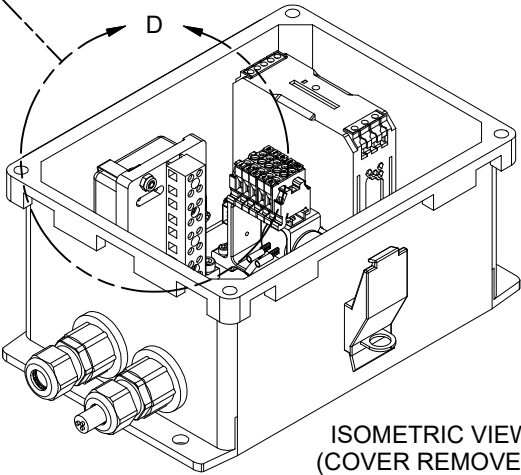
SPECIFICATIONS	
P/N	LC11432-200
MODEL	DIMMER,ANALOG,LED,NEMA4/IP66,100-240VAC IN
INPUT SPECIFICATIONS	100-240VAC, 50/60 Hz, 30W SOURCE
OUTPUT SPECIFICATIONS	0VDC (MIN) / 36VDC, 20 WATT (MAX)
FEATURES <ul style="list-style-type: none">WEATHER PROOF POWER SUPPLY NEMA TYPE 4X/IP66MAX. RECOMMENDED DISTANCE BETWEEN DIMMER & LED WHEN USING #14 AWG [2.5mmSQ.] WIRE IS 500 FT. [152m]. WIRE: RED, BLACK, GND. / SHIELD	

**INCLUDED WITH
HTL-EMS83SG-LED**



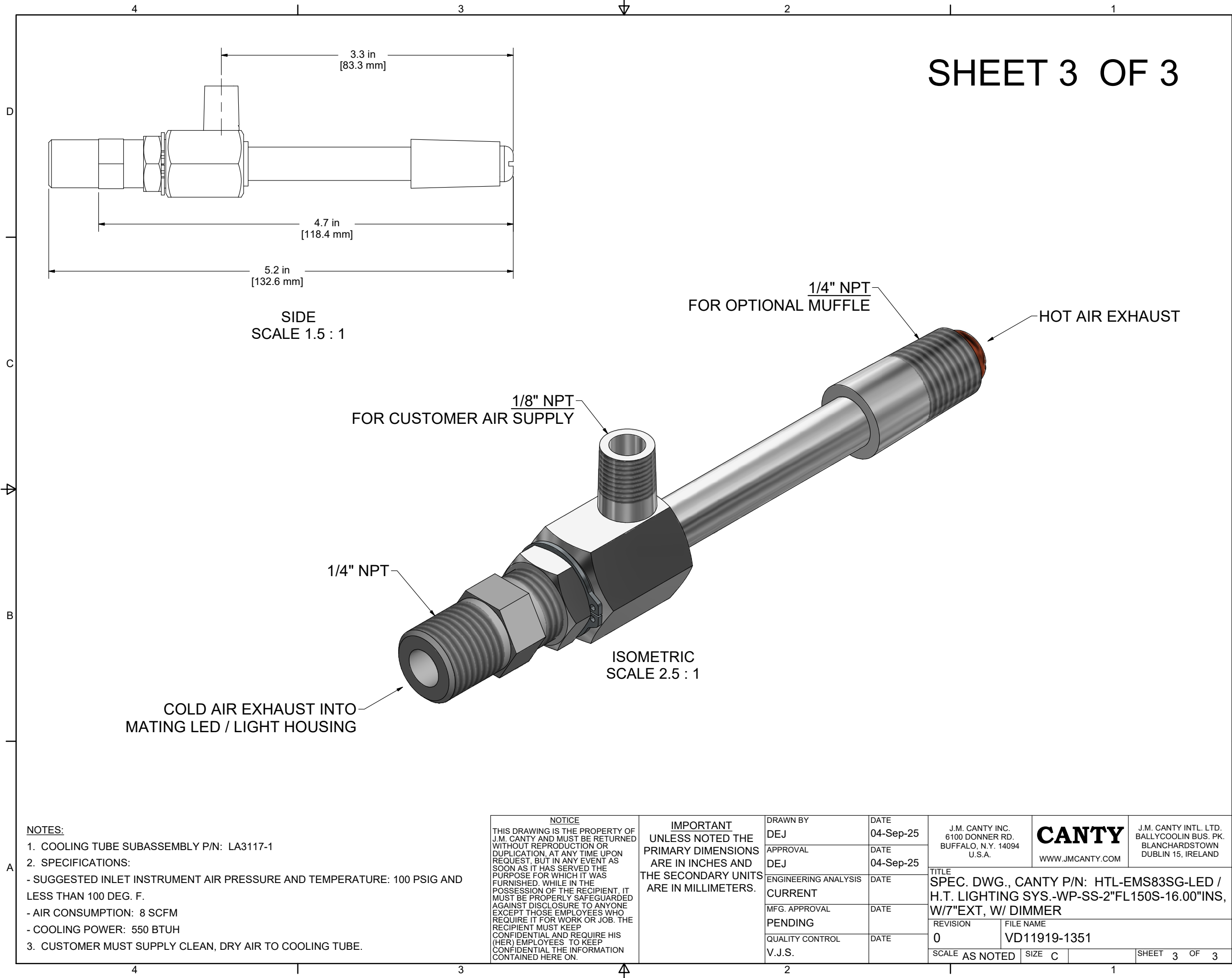
POSITIVE OUTPUT TO **WHITE WIRE** ON LED
(PRE-WIRED BY CANTY)
NEGATIVE OUTPUT TO **BLACK WIRE** ON LED
(PRE-WIRED BY CANTY)

DETAIL D
SCALE 1.125 : 1



ISOMETRIC VIEW
(COVER REMOVED)
SCALE .5 : 1

<div>NOTICE</div> <div>THIS DRAWING IS THE PROPERTY OF J.M. CANTY AND MUST BE RETURNED WITHOUT REPRODUCTION OR DUPLICATION, AT ANY TIME UPON REQUEST, BUT IN ANY EVENT AS SOON AS IT HAS SERVED THE PURPOSE FOR WHICH IT WAS FURNISHED. WHILE IN THE POSSESSION OF THE RECIPIENT, IT MUST BE PROPERLY SAFEGUARDED AGAINST DISCLOSURE TO ANYONE EXCEPT THOSE EMPLOYEES WHO REQUIRE IT FOR WORK OR JOB. THE RECIPIENT MUST KEEP CONFIDENTIAL AND REQUIRE HIS (HER) EMPLOYEES TO KEEP CONFIDENTIAL THE INFORMATION CONTAINED HERE ON.</div>	<div>IMPORTANT</div> <div>UNLESS NOTED THE PRIMARY DIMENSIONS ARE IN INCHES AND THE SECONDARY UNITS ARE IN MILLIMETERS.</div>	DRAWN BY	DATE	J.M. CANTY INC. 6100 DONNER RD. BUFFALO, N.Y. 14094 U.S.A.		<div>CANTY</div> <div>WWW.JMCANTY.COM</div>	J.M. CANTY INTL. LTD. BALLYCOOLIN BUS. PK. BLANCHARDSTOWN DUBLIN 15, IRELAND		
		DEJ	04-Sep-25						
		APPROVAL	DATE						
		DEJ	04-Sep-25						
		ENGINEERING ANALYSIS	DATE	TITLE SPEC. DWG., CANTY P/N: HTL-EMS83SG-LED / H.T. LIGHTING SYS.-WP-SS-2"FL150S-16.00"INS, W/7"EXT, W/ DIMMER					
		CURRENT							
MFG. APPROVAL	DATE								
PENDING		REVISION		FILE NAME					
QUALITY CONTROL	DATE	0		VD11919-1351					
V.J.S.		SCALE	AS NOTED	SIZE	D	SHEET 2 OF 3			



SHEET 3 OF 3

NOTES:

1. COOLING TUBE SUBASSEMBLY P/N: LA3117-1
2. SPECIFICATIONS:
 - SUGGESTED INLET INSTRUMENT AIR PRESSURE AND TEMPERATURE: 100 PSIG AND LESS THAN 100 DEG. F.
 - AIR CONSUMPTION: 8 SCFM
 - COOLING POWER: 550 BTUH
3. CUSTOMER MUST SUPPLY CLEAN, DRY AIR TO COOLING TUBE.

<div>NOTICE</div> <div>THIS DRAWING IS THE PROPERTY OF J.M. CANTY AND MUST BE RETURNED WITHOUT REPRODUCTION OR DUPLICATION, AT ANY TIME UPON REQUEST, BUT IN ANY EVENT AS SOON AS IT HAS SERVED THE PURPOSE FOR WHICH IT WAS FURNISHED. WHILE IN THE POSSESSION OF THE RECIPIENT, IT MUST BE PROPERLY SAFEGUARDED AGAINST DISCLOSURE TO ANYONE EXCEPT THOSE EMPLOYEES WHO REQUIRE IT FOR WORK OR JOB. THE RECIPIENT MUST KEEP CONFIDENTIAL AND REQUIRE HIS (HER) EMPLOYEES TO KEEP CONFIDENTIAL THE INFORMATION CONTAINED HERE ON.</div>	<div>IMPORTANT</div> <div>UNLESS NOTED THE PRIMARY DIMENSIONS ARE IN INCHES AND THE SECONDARY UNITS ARE IN MILLIMETERS.</div>	<div>DRAWN BY</div> <div>DEJ</div>	<div>DATE</div> <div>04-Sep-25</div>	<div>J.M. CANTY INC. 6100 DONNER RD. BUFFALO, N.Y. 14094 U.S.A.</div>		<div>CANTY</div> <div>WWW.JMCANTY.COM</div>	<div>J.M. CANTY INTL. LTD. BALLYCOOLIN BUS. PK. BLANCHARDSTOWN DUBLIN 15, IRELAND</div>	
		<div>APPROVAL</div> <div>DEJ</div>	<div>DATE</div> <div>04-Sep-25</div>					
		<div>ENGINEERING ANALYSIS</div> <div>CURRENT</div>	<div>DATE</div>	<div>TITLE</div> <div>SPEC. DWG., CANTY P/N: HTL-EMS83SG-LED / H.T. LIGHTING SYS.-WP-SS-2"FL150S-16.00"INS, W/7"EXT, W/ DIMMER</div>				
		<div>MFG. APPROVAL</div> <div>PENDING</div>	<div>DATE</div>					
		<div>QUALITY CONTROL</div> <div>V.J.S.</div>	<div>DATE</div>	<div>REVISION</div> <div>0</div>	<div>FILE NAME</div> <div>VD11919-1351</div>	<div>SHEET 3 OF 3</div>		
				<div>SCALE</div> <div>AS NOTED</div>	<div>SIZE</div> <div>C</div>			